



United Nations Mine Action Centre for Afghanistan
UNMACA

MAPA

MINE ACTION PROGRAMME FOR AFGHANISTAN

Integrated Work Plan 1386

(1st April 07 - 31st March 08)

United Nations Mine Action Centre for Afghanistan (UNMACA)
House 95, Charahi-e-Zamq, Wazir Akbar Khan
P.O. Box: 520 Central Post Office Kabul – Afghanistan
Tel: +93(0)70-043 447/+93(0)798-010 460
email: mapa@unmaca.org

مرکز ماین پاکى ملل متحد برائى افغانستان
خانه 95، سرک جیم، چهاراهى زنبق، وزیر اکبر خان
پست بکس 520، پسته خانه مرکزى کابل
تلیفون: +93(0)798-010 460/ +93(0)70-043 447
پست الکترونیک: mapa@unmaca.org



Contents

Foreword	3
Acronyms	4
IWP Section I – General	5
I.1. Mine Action Programme for Afghanistan (MAPA) overview	5
I.2. Scope of the problem	5
I.3. Scope of the Integrated Work Plan (IWP)	6
I.4. Integrated Work Plan objectives for 1386	6
I.5. Assets Allocation and Priorities	6
I.5.1. Planning priority system	7
I.5.2. 1386 available resources	8
I.6. IWP Constraints	8
IWP Section II – Mine Action Coordination	10
II. Methodologies	10
II.1. Team Structure/Capabilities	11
II.2. Mine Risk Education and Victim Assistance	13
II.3. Seasonal Allocation	15
II.4. UNMACA Coordination	16
II.4.1. Quality Management	16
II.4.2. Information Management System for Mine Action (IMSMA)	17
II.4.3. Information Communication and Technology (ICT) and Management Information System (MIS) Objectives	17
II.4.4. Technical and training development	17
II.4.5. Support to the ANBP	18
II.5. Security within the MAPA	18
Annex A. Mine/ERW cleared areas in Afghanistan	
Annex B. Landmine Impacted Communities in Afghanistan	
Annex C. Suspected Hazardous Areas in Afghanistan	
Annex D. Targets and Objectives for IWP 1386	
Annex E. Summer Resource Allocation Plan	
Annex F. Winter Resource Allocation Plan	
Annex G. Team Structure	
Annex H. AMAC West Operational Task wise plan	
Annex I. AMAC Center Operational Task wise plan	
Annex J. AMAC North Operational Task wise plan	
Annex K. AMAC East Operational Task wise plan	
Annex L. AMAC Northeast Task wise plan	
Annex M. AMAC Southeast Task wise plan	
Annex N. AMAC South Task wise plan	



Foreword

I am pleased to present the Mine Action Programme for Afghanistan (MAPA) Integrated Work Plan (IWP). The 1386 IWP reflects Government of Afghanistan responsibilities and commitments towards the achievement of the mine action national benchmarks and towards a vision of a country free from landmines and explosive remnants of war (ERW), where people and communities live in a safe environment conducive to national development, and where landmine and ERW survivors are fully integrated in the society and thus have their rights and needs recognized and fulfilled.

The IWP presented provides a yearly roadmap for supporting the achievement of the Convention on the Prohibition of the Use, Stockpiling, Production and Transfer of Anti-Personnel Mines and on Their Destruction (Ottawa Convention), of which the government of Afghanistan's became the 126th member in March 2003:

- Clearing all known minefields in Afghanistan by 2013;
- Destroying all known stockpiled anti-personnel mines in Afghanistan by 2007;
- Providing mine risk education to the Afghan people; and
- Assisting those who have been injured by mines and UXO.

As well as a planning towards meeting the Afghanistan Compact and the Afghanistan National Development Strategy (ANDS) benchmarks:

- By end-2010, the land area contaminated by mines and unexploded ordnance will be reduced by 70%;
- all stockpiled anti-personnel mines will be located and destroyed by end-2007; and
- By end-2010, all unsafe, unserviceable and surplus ammunition will be destroyed.

It is be noted, that the responsibility for stockpile destruction lies with the Ministry of Defense (MoD) with support from Afghanistan's New Beginnings Programme (ANBP), while the United Nations Mine Action Center for Afghanistan (UNMACA) offers technical and coordination assistance.

This document lays the foundation for the development of Implementing Partners' annual work plans and all mine action organizations coordinated by UNMACA, independently of the source of funding. The IWP covers the year 1386, which for mine action coincides with 1st April 2007 – March 31st 2008.

This work plan establishes the milestones for Afghanistan mine action, and I am pleased with the ambitious targets that we have set for this year.

As we look toward the nation's future, UNMACA on behalf of the Ministry of Foreign Affairs is confident that with the dedication of the mine action employees and the support of the international community, Afghanistan will achieve its mine action goals and free the land from the deadly threat of mines and explosive remnants of war.

Daniel Bellamy
Programme Manager - UNMACA

Kabul, 1 April 2007



Acronyms

ALIS	Afghanistan Landmine Impact Assessment
ATC	Afghan Technical Consultants
AMAC	Area Mine Action Center
BAC	Battlefield Area Clearance
CBMCT	Community Based Manual Clearance Team
CBMRE	Community Based Mine Risk Education
CL	Community Liaison
DAFA	Demining Agency for Afghanistan
DDG	Danish Demining Group
DT	Demining Team
EODT	Explosive Ordnance Disposal Teams
ERW	Explosive Remnants of War
HI	Handicap International
H-PK	Hairatan-Pulikhumri Power line project
HT	Halo Trust
ICRC	International Committee of the Red Cross
ICT	Information, Communication, Technology
IDP	Internally Displaced Persons
IMSMA	Information Management System for Mine Action
LIAT	Landmine Impact Assessment Team
MCT	Manual Clearance Team
MDG	Mine Dog Group
MDS	Mine Dog Set
MDU	Mechanical Demining Unit
MCPA	Mine Clearance Planning Agency
MAPA	Mine Action Programme for Afghanistan
MDC	Mine Detection and Dog Center
MIS	Management Information System
MRE	Mine Risk Education
OMAR	Organization for Mine Clearance and Afghan Rehabilitation
QMIT	Quality Management Inspection Team
SHA	Suspected Hazardous Area
SOPs	Standard Operating Procedures
UNMACA	United Nations Mine Action Center for Afghanistan
VA	Victim Assistance
WRA	Weapons Removal & Abatement



IWP Section I – General

I.1. Mine Action Programme for Afghanistan (MAPA) overview

The MAPA is an umbrella organization comprised of an array of implementing partners (IPs) involved in one or more of the components of mine action, including mine and UXO clearance, minefield survey, mine risk education (MRE), victim assistance (VA) or monitoring, evaluation and training. The MAPA began under the auspices of the United Nations in 1368 (1989) and made history as the first indigenous mine-action programme in the world. The MAPA employed 432 Afghan deminers by Mizaan 1369 (September 1990) and over the past 18 years has expanded its workforce up to some 8,500 Afghans dedicated to mine action across Afghanistan.

The MAPA is the world's largest humanitarian mine action programme, and coordination is a major undertaking. UNMACA is responsible for the coordination of the MAPA on behalf of the Government, which has designated the Ministry of Foreign Affairs (MoFA) as the government focal point for mine action.

I.2. Scope of the problem

Contamination from landmines and Explosive Remnants of War (ERW) impacts some 2,464 communities in Afghanistan where an estimated 4.2 million Afghans live. The MAPA supports the contaminated communities through a diverse range of activities, including implementation of mine risk education, technical training related to mine action, general and technical information gathering and clearance of area contaminated by mines/ERW.

The Afghanistan Landmine Impact Survey (ALIS) provides the status of landmines/ERW impact on communities nationwide. The following table shows the impacted communities, suspected hazardous areas and contaminated areas by region, as of March 2007:

Regions	Impacted Communities (No)	Suspected Hazardous Area (No)	Contaminated Areas (Sqm)
Center	856	1585	208,232,822
East	159	234	52,046,484
North	229	358	31,923,490
Northeast	408	831	73,399,488
South	246	403	151,182,502
Southeast	335	611	98,589,861
West	231	393	146,417,956
Grand Total	2,464	4,415	761,792,601



Each of the communities affected by SHAs are defined as high, medium or low impact with supporting blockage factors linking the importance of each SHA to communities. MAPA's top priority will be targeting all high impact SHAs to reduce the number of high impacted communities.

Information on new SHAs continues to be updated and reported by mine action organizations, particularly as more refugees and Internally Displaced Persons return, in order to update and maintain the ALIS database. In addition, UNMACA Landmine Impact Assessment Teams (LIAT) continues to regularly update the ALIS data in all impacted communities. (Annex C shows a map of known SHAs in Afghanistan)

I.3. Scope of the Integrated Work Plan (IWP)

The 1386 Integrated Work Plan (IWP) is a technical document intended primarily for use within the MAPA, and has been developed in support of the Government of Afghanistan's mine action objectives. This document allocates MAPA humanitarian resources coordinated by UNMACA to achieve overall programme objectives. The Area Mine Action Centers (AMACs) and MAPA mine action Implementing Partners (IPs) are to use this document to guide their activities during the work year 1386. The IWP can also be used as the basis for IPs' project proposals, operational and training plans. The work plan is continuously revised and updated through formal quarterly reviews.

The IWP plan focuses primarily on clearing:

- those communities listed as high impact, or having the highest number of accidents and incidents;
- clearing areas that impede the return of refugees and internally displaced persons (IDPs); or
- in support to reconstruction projects.

I.4. Integrated Work Plan objectives for 1386

The 1386 objectives build on the activities and ALIS data of previous years, according to the available resources and opportunities. The following areas would be mainly focused throughout the year:

- Clear and verify all areas prioritized by the AMAC offices, based on the LIS data, local authority requests and reconstruction/development needs,
- Conduct Mine Risk Education and Victim Assistance throughout Afghanistan mainly on high impacted communities,
- Increase capacity building for the national capacity in all areas of mine action.
- It is anticipated that the output for 1386, based on the planned assets, would be **36.8 sqkm survey/clearance of mined areas and 104.4 sqkm survey/ clearance** of ERW contaminated areas. (The detailed targets and objectives for 1386, by IP, and by area, are shown in Annex D)

I.5. Assets Allocation and Priorities

The prioritization policy is to reduce the impact of mines and ERW in communities using all available means; and to support national development through targeted clearance of mines/ERW impacting national infrastructure projects.



The following factors are considered when allocating resources and in prioritizing demining assets throughout Afghanistan:

- The community impact of SHAs, as reflected in the ALIS, will be utilized to reduce the human suffering from landmines and ERW;
- All known minefields should be addressed by 2013 as per Article 5 of the Ottawa Convention. Operational planning is also to be aligned with the Government's overall development plans i.e. the infrastructure reconstruction priorities as power grids/communications systems, water systems and watersheds, etc.
- Resource allocation to different regions of the country are guided by security, climate and density of impacted communities;

I.5.1. Planning priority system

Guiding factors/conditions for operational prioritization are as follows:

Priority One:

- ALIS high impacted communities, and/or
- Casualties – where civilian mine/UXO casualties are regularly occurring and mines are of imminent danger to the population;
- Repatriation – where demining is needed to support repatriation of refugees or IDPs who are currently returning or will return within three to six months;
- Rehabilitation/Development – mine action requests to support rehabilitation and development projects that are planned to commence immediately or within three to six months;
- Social impact – request to clear areas vital to the population for access, hospitals, village water supplies/wells and markets.

Priority Two:

- ALIS medium impacted communities;
- Casualties – civilian mine/UXO casualties are occurring and are of significant danger;
- Rehabilitation/Development – requests where plans for operations have been completed, and the work is to commence within six to 12 months;
- Repatriation – requests to support repatriation of refugees/IDPs where the return is likely to occur within 12 months of the task being completed;
- Social impact – requests that are significant (but not vital) to the economy or general well being of a community.

Priority Three:

- ALIS low impacted communities;
- Rehabilitation/Development – requests where the project concept has been approved and it to start within 12-24 months;



- Repatriation – requests to support repatriation of refugees/IDPs where the return is likely to occur within 12-24 months;
- Social impact – requests where clearance would make some contribution to the ongoing economic development and physical well being of the population (endorsed by local council/shura).

Additional tasking:

- All requests not covered in Priorities 1-3 where demining will improve local conditions.

Specific requests could also be integrated in the IWP from province governors, district administrators, and other officials and are regularly updated.

I.5.2. 1386 available resources

The following table shows the resources available within the MAPA IPs for 1386 humanitarian activities, (detailed clearance/MRE assets are shown in Annex E):

Type of Resources/Assets	Available
Demining Teams (manual clearance)	
Demining Teams (20 Lane)	50
Demining Teams (10 Lane)	37
Manual Clearance Team (Halo Trust and DDG)	60
Manual Unit (Halo Trust)	13
Total Demining Team/MCTs	160
Mine Dog Groups (MDG)	10
Mine Dog Sets (MDS)	51
Mechanical Demining Unit (MDU)	
Mechanical Demining Unit (MDU) support for DT	41
Landmine Impact Assessment/Tech Survey Teams	
LIAT	22
Quality Assurance	
QMIT (UNMACA)	21
Explosive Ordnance Disposal	
(EODT/BAC)	78
Mine Risk Education	
Community Based Mine Risk Education	75
Encashment Center Teams	3
Grand Total	461

I.6. IWP Constraints

- Technical constraints linked to the nature of the terrain, the climate, the variety and depth of mines/UXO and the presence of cluster ammunition. Problems related to these issues will have to be raised with the Operations Department of UNMACA.



- Adequate and timely funding to conduct all the scheduled activities. The IWP is based on the known level of pledges and commitments in the Voluntary Trust Fund and from bilateral donors, as of 31 March 2007. Additional funding or non-transformation of pledges can affect positively or negatively the number of assets and their allocation.
- Due to the contracting system of commercial demining companies, their activities, productivity rate and tasks, cannot enter in consideration in this IWP. However, the outcome of their activities (clearance, survey, and EOD) is recorded in the IMSMA¹ database.

¹ The Geneva International Centre for Humanitarian Demining (GICHD) has developed and deployed the Information Management System for Mine Action (IMSMA). The system is currently in use in more than 80% of mine action programmes around the world. UNMACA installed IMSMA in 1381 (2002) and uses IMSA to plan, manage, report and map mine and UXO clearance activities; plan, manage, report and map MRE activities; record, report on, and map victim information; and record, report on, and map socio-economic information.



IWP Section II – Mine Action Coordination

II. Methodologies

UNMACA, as the coordinating and managing body for the MAPA, has recently reviewed mine action operations. After 18 years of activities and driven by a decrease in donor support to the programme (minus 30 percent in 1385), along with the commitment of the Government to meet the benchmarks of the Ottawa Convention by 2013; clearance methodologies, productivity, success rates and the use of the demining “tools” of the IPs were reviewed during the third and fourth quarter of 1385. Following the operations review, UNMACA has integrated several changes in the work methodology of the IPs into 1386 activities and introduced a new concept of operations for immediate implementation.

The blue print of the new concept of operations is as follows:

- **Manual Clearance Teams (MCT) → Demining Teams (DT):**
 1. It is intended that all MCTs within the Afghan NGOs will be converted to “one man one lane drill” and will become Demining Teams (DT). This will significantly increase the operational capacity and output of the clearance organizations, and will go some way to offset the recent loss of capacity due to funding shortfalls. This measure will be introduced as soon as possible, after adequate training of the teams, and within current equipment levels.
 2. All MCT Command Groups (from now on DT CG) will be trained to carry out technical survey and area reduction in addition to clearance. During this training, CG will also be introduced to the “tool box” approach – defined as a combination of all types of clearance. Under the “tool box” approach, CGs will be trained in the deployment and use of dogs and mechanical assets in support of clearance operations.
 3. In order to adapt to the changing nature of the tasks being implemented, all DTs can be divided into smaller sections (5 deminers and a section leader minimum) and can be deployed in small SHAs. With the present MCT structure (which today varies between each IP, from a minimum of 20 men to a maximum of 40 men), this approach is not possible. This current approach often results in part of the MCT capacity being redundant on site, thereby reducing the productivity and efficiency of the teams, or having smaller SHAs not being targeted for clearance.
 4. All DTs can be supported by dogs or mechanical assets depending on the site requirement as identified in the annual integrated work plan, or in the more detailed clearance plan. For each site, a comprehensive clearance plan will be written and agreed (after physically assessing the SHA) with the clearance organization by UNMACA Operations staff, detailing how the site is to be cleared, by what assets and the expected duration of the task.
 5. The IPs will structure their DT into groups of 10 deminers (MDC and MCPA) or 20 deminers (ATC, DAFA and OMAR) deployable into smaller sections as required. (Ref. point 3)
 6. As a first step, the NGO that is currently established as a sole survey organization, MCPA, will be transformed into a clearance organization and its teams will be retrained to undertake both survey and/or clearance activities.



- **Mine Detection Groups (MDG) → Mine Dog Set (MDS):**
 7. The new structure of a dog team will be composed of: 3 dogs, 2 dog-handlers and 1 set leader (who will use the third dog for QC), and will be identified as a Mine Dog Set. Each MDS can be deployed independently to support any DT or MDU of any other organizations.
 8. The MDG teams (composed today of 4 dogs, 4 dog-handlers, 1 group leader, 2 section leaders; and 12 deminers) will be restructured to be DTs and MDSs.
- **Mechanically Assisted Demining Assets**
 9. Mechanically assisted demining should be part of the demining 'toolbox'. However, due to limited suitable mechanical resources within Afghanistan there is a lack of mechanical assets to provide the level of clearance support to DTs to fully implement the new concept of operations. Until such resources are available, the current Mechanical Demining Units (MDU) will be employed wherever practical according to site clearance requirements and priorities.
 10. MDU teams will be standardized across IPs.
 11. The MDU should be capable of operating multiple mechanical tasks within their respective IP. If the MDU has multiple plant items they are to be accredited on each separate mechanical asset.
 12. MDU assets will be allocated to each region in the Annual Operations Plan. The Area Manager/Operations Officer is to liaise closely with the clearance organization to ensure that detailed planning is conducted to ensure maximum employment and productivity from all MDU assets allocated to their region.

MDU will be capable of the following:

- Conduct of ground preparation.
- Conduct area reduction in support of manual demining teams during both area clearance and technical survey.
- Assist with the process of clearing hazardous soil or debris.
- Provide support to a manual demining team for verification and QA.
- Conduct verification/clearance of low threat areas to prove or disprove the presence of mines or ERW (area release).

All assets will be tasked by UNMACA/AMACs (UNMACA regional offices) in consultation with the clearance organization.

II.1. Team Structure/Capabilities

The individual teams depicted above have a different set of capabilities and relative advantages based on ground type, weather and the presence of different types of landmines.

The make-up of the assets for the year 1386 would be as per the new restructuring: (detailed Team structure is attached as Annex N)

- **Demining Teams (DT-20 Lanes)** of ATC, OMAR, and DAFA consist of 36 men. HALO Trust manual clearance teams consist of 30 persons, and DDG teams consist of 27



persons. These MCTs are engaged in clearing anti-personnel (AP) and anti-tank (AT) minefields.

- **Demining Teams (DT- 10 Lanes)** of MCPA and MDC consist of 21 men. These DTs conduct the same clearance activities as the 20 Lane Demining teams.
- **Mechanical Demining Unit (MDU)** is composed of one or more armored machines, which works to support MCTs and is comprised of 4 personnel. MDUs are utilized in ground processing and ground preparation roles. Common tasks performed by MDUs include vegetation removal, soil loosening, obstacle removal and other tasks designed to expedite clearance operations.
- **Mine Dog Set (MDS)** consists of 3 men and three dogs. Which would be used as an area reduction and support tool to DTs.
- **Landmine Impact Assessment Team (LIAT)** consists of 3 men. LIATs are utilized to conduct confirmation assessment, post demining impact assessments and community liaison.

Community Liaison (CL) is an area within the MAPA that is currently underdeveloped. The UNMACA will introduce new CL activities into the role of the Landmine Impact Assessment Teams (LIAT) as one of their responsibilities. All LIAT team members will be trained in community liaison functions during 2007.

The primary objective of CL is to ensure that the community in general and land users in particular, in any area where mine action is taking place, are fully informed at all stages of the process, and that they are confident in the safety of the land following clearance.

Functions:

- Facilitate smooth relationships between the communities and the demining contractors so that mine action can be completed with minimal disruption to both community life and mine clearance operations.
 - Gather and relay additional information from communities about the target areas so that operations can be conducted with as much information about the area as possible.
 - Gather and report information to AMAC/UNMACA Operations relating to additional areas that are suspected or confirmed as dangerous by the local community.
 - Respond to sightings by the community of unexploded ordnance or mines and report to the AMAC/UNMACA Operations.
 - Conduct a Post Clearance Review of cleared areas 3-6 months following clearance to reaffirm that the landowners are confident in the safety of the land, establish the post clearance use of the land, and identify any further development needs inhibiting the use of the land or the area.
- **Community Based Mine Clearance Team (CBMCT)** These teams are to continue working in AP minefields in agricultural, irrigation, residential and grazing lands of Nangarhar province. There are two teams funded by Novib and would be closed-down end of May 07.
 - **Battle Area Clearance Teams (BAC)** are DTs cross-trained in battlefield clearance techniques. All demining teams within the programme are cross-trained for conducting BAC operations and demolitions of ordnance up to 85 mm.



- **Explosive Ordnance Disposal (EOD)** teams of OMAR, DAFA, ATC and WRA are composed of seven personnel and EOD teams of DDG are composed of four men. Halo Trust EOD teams are nine men. In 1386, the EOD capacity will be used to focus on the destruction of high threat/high technology ERW in all land types throughout the country. Teams will be tasked throughout 1386 to attend priority emergency tasks, village-by-village operations, deal with other EOD related items in BAC tasks and record deep buried bombs. WRA EOD teams will mainly deal with stockpile destruction and village-by-village clearance operation. (The “EOD Team Deployment” can be found in Annex E).
- **Mine Risk Education** teams are generally composed of two instructors and in some cases could be increased to three instructors.
- **Quality Management Inspection Teams (QMIT)** are composed of three men. These teams will be conducting the External Quality Assurance and Quality Control of MAPA implementing partners including commercial Demining companies.

II.2. Mine Risk Education and Victim Assistance

Clearance and survey are not the only components for a successful implementation of the mine action programme: mine risk education and victim assistance are equally important as they help to inform the population and support mine victims.

The main goal of Mine Risk Education (MRE) programming is to reduce the number of landmine and ERW victims by changing the risky behaviors of communities and individuals living or working in mine/ERW impacted areas into safe behaviors.

The UNMACA coordinates the implementation of MRE throughout Afghanistan. The MAPA implementing partners HI, OMAR, AAR Japan, and ATC along with the Afghan Red Crescent Society, target high, medium and low impacted communities through a variety of MRE methods including community based, returnee, public information, and landmine safety programme activities.

- **Community Based MRE**

The Community Based Mine Risk Education (CB MRE) Programme is designed to respond to the needs of communities through Emergency Response, Community Liaison (CL) networks, and community monitoring of risk (victim and incident data collection) and MRE impact. The programme is based on an LIS Impact Strategy to focus MRE programme activities on the needs of individual communities based on the impact of landmines and ERW on the lives and livelihoods of community members. MRE Teams are tasked by the Area Mine Action Offices according to quarterly plans and externally monitored through the UNMACA Quality Assurance programme.

- **Emergency Response MRE**

The emergency response provides all communities identified as having mine/ERW risk with immediate mine awareness activities directly provided by MRE teams. MRE teams spend several days in a community to assist with the assessment of risk and provide MRE activities

- **Community Based (CB) Programme**



The CB programme is the central CB MRE strategy for communities considered High and Medium impact by the LIS. This programme is designed to disseminate information to mine affected communities by delivering needed Mine Risk Education activities and gain vital information regarding mine/ERW incidents and injuries.

- **Community monitoring**

Community monitoring is an activity that takes place in all communities identified by the LIS as Low Impact. Monitoring throughout the year will help maintain updated LIS data in the key areas of new victims, incidents, and SHA data. Monitoring and direct MRE activities as well as other programme components (teacher training, signboards, awareness marking, etc.) will ensure that mine/ERW risk awareness is maintained, safe behaviors encouraged and LIS data is kept current.

- **Mobile Cinema**

Mobile cinemas provide an innovative community activity that engages larger numbers of people through the viewing of MRE and disability awareness dramas and documentary videos developed specifically for Afghanistan.

- **Data collection**

Data collection is a vital part of any mine action programme. Incident and hazardous area reporting and new victim data are essential for risk reduction strategies, planning and programme development. MRE implementers lead by the Afghan Red Crescent Society include data collection in their community activities to ensure that LIS data is kept up to date and other mine action resources respond to any new incidents immediately.

- **Returnee Mine Risk Education Programme**

Returnee MMRE targets the repatriating Afghan populations through MRE activities provided at the UNHCR encashment and transit centers near the Afghanistan borders of Pakistan and Iran. This programme provides an introduction to the risks associated with mines and ERW and promotes safe behaviors to assist with travel through unsafe environments and the possible resettlement in communities with a mine/ERW risk.

- **MRE Public Information programme**

Public information or mass communications are key components in all MRE programmes for the development of innovative materials and media activities that augment the field operations of community based projects.

- **Landmine Safety Programme**

The Landmine Safety Programme is a MRE activity directed at the aid worker community in particular the UN. This programme has been developed through UNMAS for international use and in Afghanistan; the UNMACA developed a country specific programme utilizing Afghanistan information. The LSP programme is implemented by UNMACA staff in all regions upon request.

- **Nationalization of MRE programme activities**

The UNMACA is working with Government to ensure that prevention of new mine injury is included in the national plans for public health and safety programmes. This includes work with the Ministry of Education for national curriculum development to include MRE and



mine action information within the text books for the public education system. And work with the Ministries of Public Health and Information to support the establishment of public health and safety programmes that reach out through the government broadcast and civil service mechanisms. (MRE resources are attached as Annex E).

- **Victim Assistance**

Victim assistance programming in Afghanistan has shifted its perspective from service provision to advocacy and awareness raising activities that will ensure inclusive programme opportunities and equal rights to landmine survivors, all people with disabilities and their families. The core component of this programme will combine community mobilization and education with public information activities targeting mine/ERW impacted communities throughout the country. The MRE implementing partners have been trained in advocacy and awareness and will begin implementing victim/disability awareness and advocacy activities in the communities where they work through the Community Based MRE programme. Additional disability awareness raising training will be provided to government, aid worker agencies as part of a capacity development component within the UNMACA

The VA programme is also working with government to integrate disability activities within the line ministries responsible for health, education, communication, employment and social services. The VA programme will focus on Advocacy, Awareness, and Prevention as the key issues for capacity development. The UNMACA provides technical and other resource supports to the Ministry of Public Health, Ministry of Education, and the Ministry of Labor, Social Affairs, Martyrs and Disabled to enhance their disability related programmes and help build the institutional structures to further and ensure the rights of landmine survivors and other people with disabilities.

II.3. Seasonal Allocation

Programme assets will operate on a two-season system (summer and winter) with resources moving between regions during the seasonal changeover. This will ensure that assets are used in weather conditions that will allow the greatest annual outputs of cleared lands. Generally teams will move from higher elevation areas with more extreme conditions to lower lying areas with more moderate conditions.

The proposed 1386 mine action seasons are:

- (i) Summer: 1 April 07 - 31 Oct 07
- (ii) Winter: 1 Nov 07 - 31 Mar 08

The actual deployment/changeover dates from region to region may vary, and depend on weather, security and continuation of task.

During the winter season, demining teams from Central, Northern and Southeastern areas will be deployed in Southern, Western and Eastern areas where the weather is warmer. EOD operations will generally be unaffected, and the teams will be able to operate during all the year in all locations.

MRE activities are largely unaffected by the weather and will operate in all the regions without any seasonal change in their locations. (The MRE Resources Allocation is attached as Annex E)



The actual locations of mine action resources within an area during any given period will be determined by the AMAC based on national planning priorities. If resources are required to move out of the areas of responsibility of an Area Manager, Plans Section UNMACA will coordinate the movement in consultation with the relevant AMACs and involved agency and issue a relocation form. (Tables showing summer and winter allocations are included as Annex E & F).

II.4. UNMACA Coordination

UNMACA has responsibility for planning, management and oversight of all mine-action activities on behalf of the GoA. UNMACA is a project of the United Nations Mine Action Service (UNMAS), which serves as the UN focal point for mine action across the world, and is administered by the United Nations Office for Project Services (UNOPS), which provides contracting, procurement, financial management, technical and legal assistance. The MAPA has a workforce of some 8,500 personnel, and approximately 500 headcounts are working for commercial demining companies.

UNMACA coordinates MAPA operations nationwide through seven Area Mine Action Centers (AMACs) located in Kabul, Herat, Kandahar, Mazar-e-Sharif, Kunduz, Gardez and Jalalabad and staffed entirely by Afghans. These regional offices work directly with the communities, UN offices, GoA representatives and aid organizations in the area.

AMACs at the area level are responsible for the coordination of mine action activities with the local authority, UN agencies, National and International IPs and NGOs. (Operational Task plans of AMACs are attached in the annexes).

II.4.1. Quality Management

During 1386 UNMACA will continue its Quality Management activities with an emphasis on promoting QM standards and objectives. This will include:

- Decentralizing the QM database to AMAC level to facilitate recording, reporting and analysis of Quality Assurance (QA) and Quality Control (QC) inspection results as good management tool to improve the efficiency and effectiveness.
- Assist to finalize the establishment of the (MDD) accreditation/training site in Kandahar for all MDDs in South and West.
- External QA inspections to ensure safety and quality of work by promoting effective internal QA. The target rate will be one per week QMIT inspections on all demining worksites, with a minimum of one inspection per month at site offices.
- External QA of MRE agencies to ensure MRE field activities. Implementations of Knowledge, Attitude and Practice Survey (KAP) to measure impact of MRE programme activities. Promote effective internal QA by the agency and data entry mechanisms. Provide feedback to MRE agencies for improved implementation practices. Strengthen reporting mechanisms of MRE programme for monitoring, evaluation and materials distribution.
- QC through a process of progressive clearance samplings, post-clearance sampling supported by MDDs and manual clearance assets where necessary. QC inspections will be carried out on all reconstruction and humanitarian teams.
- Incident/accident investigation as necessary. To find out the contributed factors and recommend the preventive measures.
- QA inspections of the stockpile destruction teams mainly HALO WAD and WRA teams as agreed and directed by UNMACA.



- Accreditation of implementing partners, National, International NGOs and demining Commercial companies.
- All teams will be licensed with reference to the field assessment of the each team of specific assets. This will take place soon after the review of the AMAS when it is finalized and officially introduced for practice.
- QMIT's on job training will continue in support of the Quality management project of UNMACA.
- Finalize the Quality Assurance and Quality Control Standard Work Procedure.

II.4.2. Information Management System for Mine Action (IMSMA)

IMSMA is a vital component of the MAPA and is a critical component in the operational planning and tasking of mine clearance/MRE assets. Without a solid accurate database on the mine contamination problem within Afghanistan, future planning is difficult. To allow the GoA to meet its treaty obligations and benchmarks, it is vital that this database accurately portrays the current situation of all mine clearance/MRE activities conducted to date within Afghanistan.

II.4.3. Information Communication and Technology (ICT) and Management Information System (MIS) Objectives

Establishing an efficient and effective functioning ICT/MIS Department in support of the MAPA/UNMACA mine action operations by providing quality and professional information management, GIS and ICT services through:

- Institutionalization of IMSMA as the information management system within the MAPA through the implementation of the information management policy, Standard Working Procedures (SWP) and training by March 2008.
- Develop and maintain a fully functional ICT infrastructure to provide networking and internetworking capability at UNMACA headquarters and AMACs by September 2007.
- Develop national staff capacity to take over management responsibilities in maintaining the above-mentioned objective by June 2008.

Main ICT/MIS Activities for the current year includes:

- Develop training and lesson plans for the OPS and partner agencies.
- Host follow-up training sessions to address additional requirements.
- Establish a system to support the reporting, analysis and dissemination of data/information.
- Conduct annual needs assessment to identify the level of services and use of IMSMA.
- Launch Website and Intranet throughout the programme.

II.4.4. Technical and training development

During 1386 the following trainings and visits to other mine action programmes would be organized:

- Conducting Training of Trainers course in new concept of operations to all IPs.
- Visit of IPs key operations staff from the other mine action programs.



II.4.5. Support to the ANBP

The UNMACA will provide support to Afghanistan's New Beginnings Program (ANBP) in the form of:

- Accreditation and Licensing of all EOD teams.
- QA/QC Monitoring of all ANBP EOD Teams in the field.
- Support to accident investigations.
- Recording of clearance statistics into IMSMA.

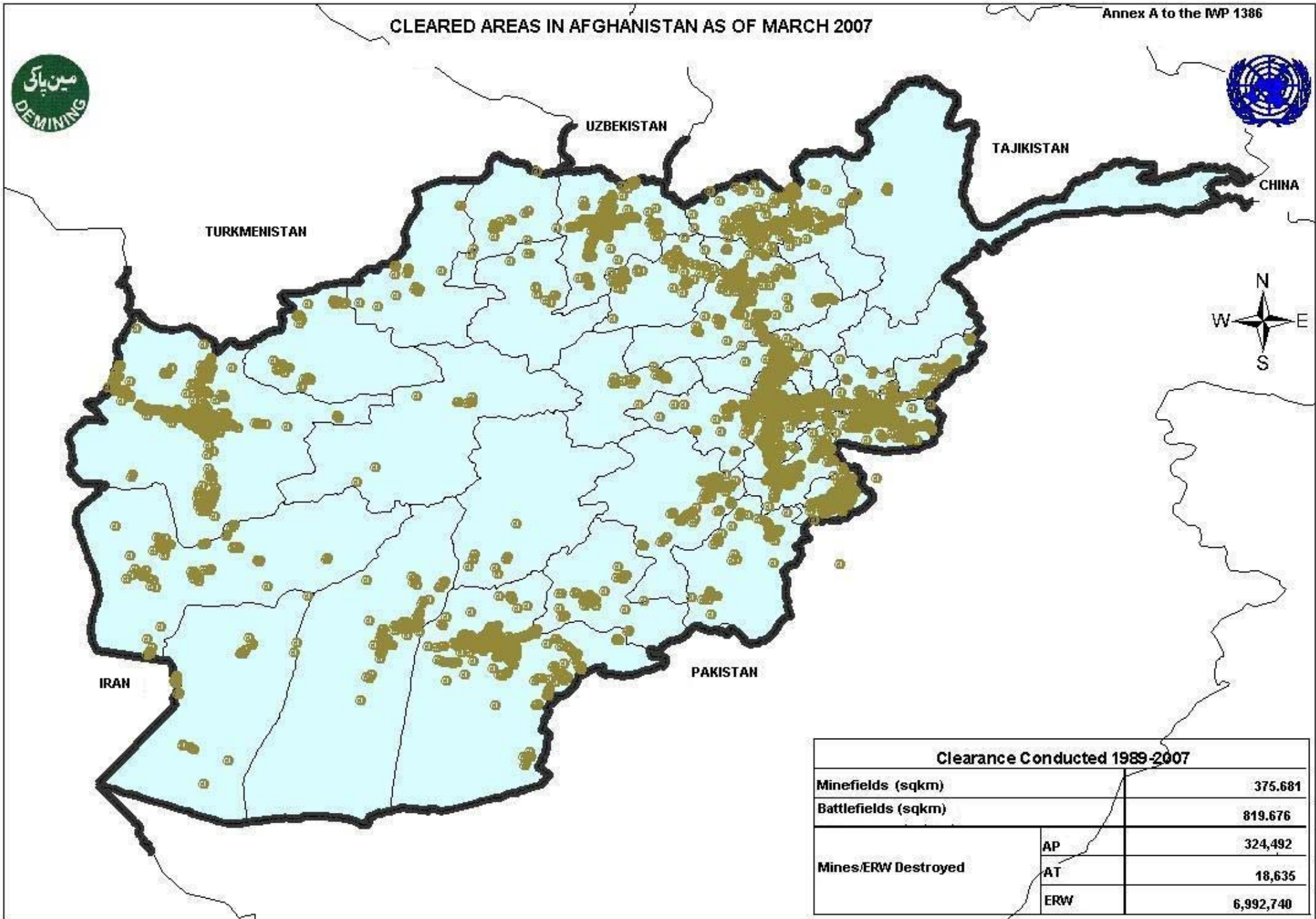
The UNMACA will provide support to the ANBP as part of its core UN responsibilities. This support will be provided via the current QA capacity deployed within the UNMACA.

II.5. Security within the MAPA

- As all but two of Afghanistan's provinces are impacted by mines/ERW, the issue of security is of major concern. In the coming year it is anticipated that there may be an increase in security incidents. In the country although the mine action personnel are not the primary target of insurgent forces, they may face risk when working in reconstruction efforts, particularly in the Southern and Eastern regions of the country. Additional risks exist due to general crime throughout the country.
- The security requirements outlined in the MAPA Security Standard Operating Procedure (SOP) are to be followed by all MAPA agencies during the execution of this work plan:
- Each organization involved in demining activities in the field must designate one security focal point. These security focal points and the UNMACA security officer will form a "MAPA Security Task Force" which will analyze / monitor the security / risk and threat situations in the country, especially in the geographic areas where the teams are deployed; it will coordinate with other security shareholders and submit proposals / recommendations for deployment of teams or cessation of demining activities.
- The MAPA will not conduct operations in any areas where military operations are ongoing, where there is internal conflict or fighting. Security incidents must be reported through concerned AMAC.
- MAPA agencies should keep themselves abreast of security developments and should seek security advice when moving into questionable areas.

CLEARED AREAS IN AFGHANISTAN AS OF MARCH 2007

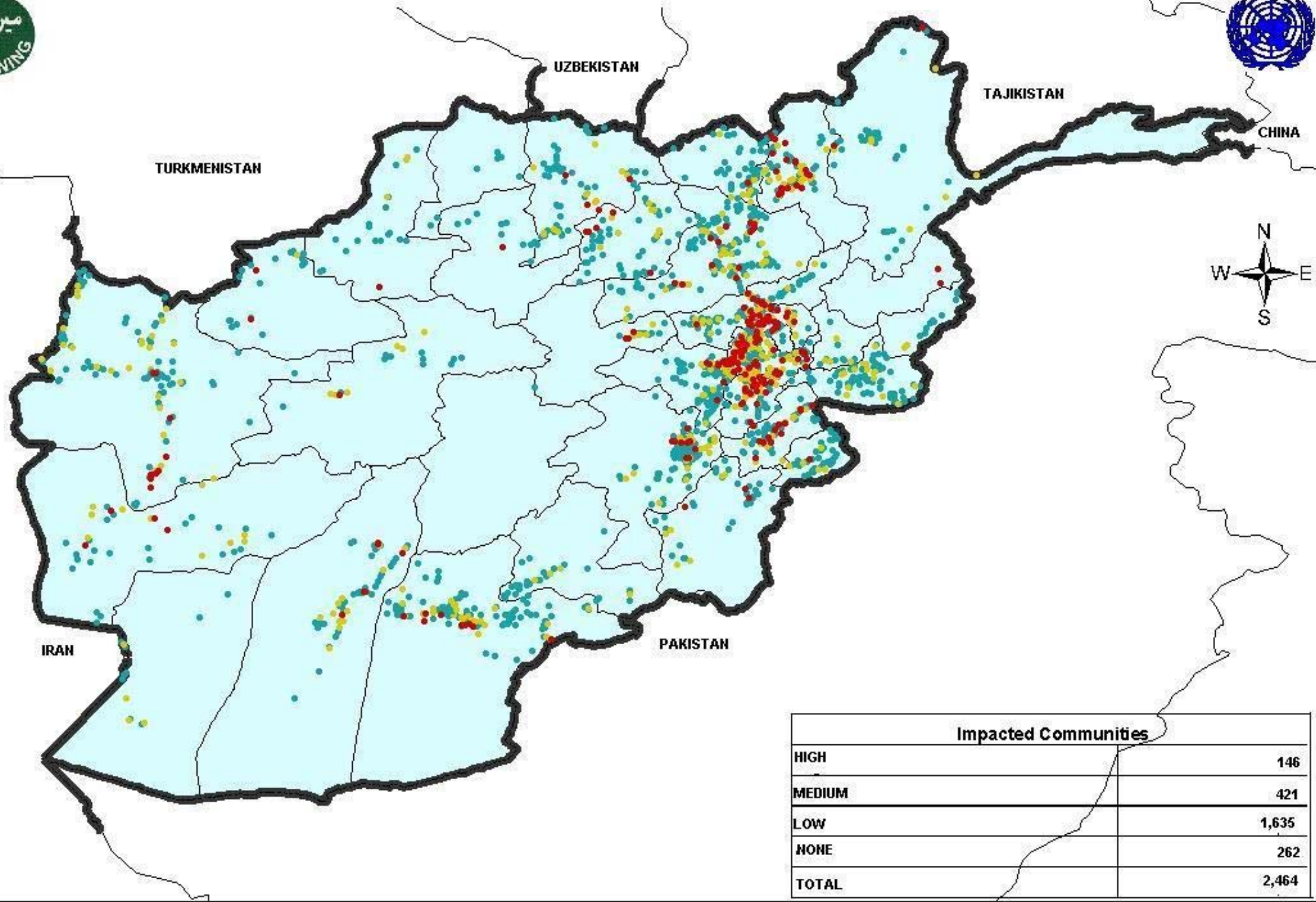
Annex A to the IWP 1386



Clearance Conducted 1989-2007		
Minefields (sqkm)		375,681
Battlefields (sqkm)		819,676
Mines/ERW Destroyed	AP	324,492
	AT	18,635
	ERW	6,992,740

LANDMINE IMPACTED COMMUNITIES IN AFGHANISTAN AS OF MARCH 2007

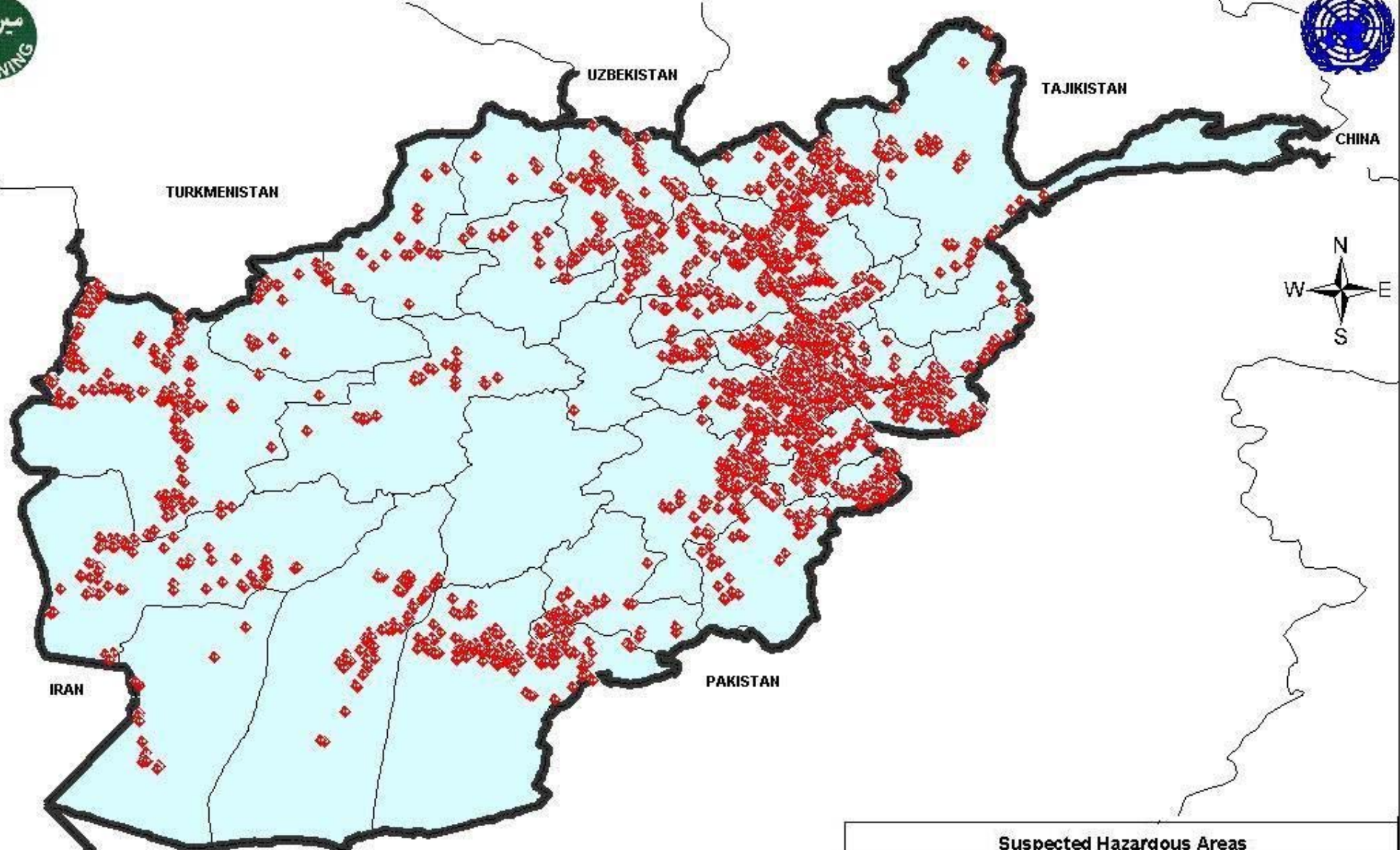
Annex B to the IWP 1386



Impacted Communities	
HIGH	146
MEDIUM	421
LOW	1,635
NONE	262
TOTAL	2,464

SUSPECTED AHAZARDOUS AREA IN AFGHANISTAN AS OF MARCH 2007

Annex C to the IWP 1386



Suspected Hazardous Areas	
Total SHAs (No)	4,415
Total Area (sqm)	761,792,601

MAPA Targets and Objectives for 1386 (2007/08)

Activity Area	Agency	No. of Teams	HUMANITARIAN							PROJECTS			Target/IP	
			C	S	N	NE	W	E	SE	Bag Project	OPS Hamkari	H-PK PL		
Mined Area Survey & Clearance	ATC	26	960,000		720,000	1,200,000			120,000	1,920,000	80,000		40,000	5,040,000
	MDS	13	480,000		528,000	792,000				1,584,000				3,384,000
	DAFA	12	528,000	720,000				720,000				960,000		2,928,000
	MDS	6	528,000	528,000				528,000						1,584,000
	OMAR	12	480,000					1,200,000	720,000		80,000			2,480,000
	MDS	7	264,000					1,056,000	528,000					1,848,000
	MDC (DT)	24	480,000	480,000	480,000	480,000	600,000					360,000		2,880,000
	MDS	18	792,000	792,000	792,000	792,000	792,000					792,000		4,752,000
	MDC (MDG)	10		211,200	1,056,000	1,584,000					88,000			4,840,000
	MCPA	13	240,000	240,000					360,000	480,000		480,000		1,800,000
	MDS	7	264,000	528,000					528,000	528,000				1,848,000
	DDG	6	360,000											360,000
	HALO	54	2,205,000		210,000	787,500								3,202,500
Sub Total (sqm)		208	7,581,000	5,400,000	3,786,000	5,635,500	4,896,000	2,256,000	4,512,000	248,000	2,592,000	40,000	36,946,500	
Battle Area Survey & Clearance	DAFA	2		3,240,000				3,240,000					6,480,000	
	OMAR	1							1,717,200				1,717,200	
	MCPA	1								3,240,000			3,240,000	
	HT	16	29,062,500		29,062,500	34,875,000							93,000,000	
Sub Total (sqm)		20	29,062,500	3,240,000	29,062,500	34,875,000	3,240,000	1,717,200	3,240,000	0	0	0	104,437,200	
Grand Total (sqm)													141,383,700	

MAPA Summer Resource Allocation Plan 1386 (2007/08)

Type of Resources	Agency	No. of teams	Humanitarian							Projects		
			C	S	N	NE	W	E	SE	Bagram Project	OPS Hamkari Project	H-PK PL Project
Demining Teams (DT 20 lane)	ATC	26	4		3	5		2	8	2		2
	ATCMDS	13	2		2	3			6			
	DAFA	12	2	3			3				4	
	DAFA MDS	6	2	2			2					
	OMAR	12	2				5	3		2		
	OMAR MDS	7	1				4	2				
Demining Teams (DT 10 lane)	MDC	24	4	4	4	4	5				3	
	MDC MDS	18	3	3	3	3	3				3	
	MCPA	13	2	2				3	4		2	
	MCPA MDS	7	1	2				2	2			
Manual Clearance Teams (MCT)	DDG	6	6									
	HALO	54	35		4	15						
Manual Unit	HALO	13	9		1	3						
Total No. of Demining Teams (DTs)		160	64	9	12	27	13	8	12	4	9	2
Total No. of Mine Dog Sets (MDSs)		51	9	7	5	6	9	4	8	0	3	0
Mine Dog Group (MDG)	MDC	10		4	2	3				1		
Total No. of Teams		10		4	2	3	0	0	0	1	0	0
Mechanical Demining Unit (MDU)	ATC	8	2		1	1			3	1		
	DAFA	5	1	1			2				1	
	OMAR	5	1				3	1				
	DDG	1	1									
	HALO	22	11		2	9						
Total No. of Teams		41	16	1	3	10	5	1	3	1	1	0
Landmine Impact Assessment Teams (LIAT)	MCPA	16	4	1	2	2	2	2	2		1	
Landmine Impact Assessment Teams (LIAT)	HALO	6	3		1	2						
Total No. of Teams		22	7	1	3	4	2	2	2	0	1	0
Quality Management Inspection Teams (QMIT)	UNMACA	21	6	1	4	4	2	2	2			

Total No. of Teams		21	6	1	4	4	2	2	2	0	0	0
Explosive Ordnance Disposal Teams (EODT)	ATC	7	2		1	1			2			1
	DAFA	3	1	1							1	
	OMAR	2					1	1				
	MDC	2				1	1					
	MCPA	2	1					1				
	DDG	19	8		4		7					
	HALO	16	5		5	6						
	HALO-WAD	20	6		5	6	2	1				
UXB/WRA	7			1	2	3	1					
Total No. of Teams		78	23	1	15	17	14	4	2	0	1	1
Grand Total of Assets		383	125	24	45	70	45	21	29	6	15	3

MRE Resource Allocation 1386

Type of Resources	Agency	No. of teams	Humanitarian						Project	
			C	S	N	NE	W	E	SE	OPS Hamkari Project
Community Based Mine Risk Education (CB MRE)	ATC	11			3	5	3			
	OMAR	16	7					4	5	
	HI	9		7						2
	AAR	2	2							
	DDG	4	1		1		2			
	HALO	2	1		1					
	ARCS	31	8	4	5	4	4	3	3	
Encashment Center (EC)	ATC	0								
	OMAR	2	1					1		
	HI	1		1						
	AAR	0								
	ARCS	0								
Total No. of Teams		78	20	12	10	9	9	8	8	2

MAPA Winter Resource Allocation Plan 1386 (2007/08)

Type of Resources	Agency	No. of teams	Humanitarian							Project
			C	S	N	NE	W	E	SE	Hamkari
Demining Teams (DT 20 lane)	ATC	23	5		3	5		2	8	
	ATCMDS	14	3		2	3			6	
	DAFA	13	2	3			4			4
	DAFA MDS	6	2	2			2			
	OMAR	12	3				6	3		
	OMAR MDS	7	1				4	2		
Demining Teams (DT 10 lane)	MDC	24	4	4	4	4	5			3
	MDC MDS	17	3	3	2	3	3			3
	MCPA	14	3	2				3	4	2
	MCPA MDS	8	2	2				2	2	
Manual Clearance Teams (MCT)	DDG	6	6							
	HALO	54	35		4	15				
Manual Unit	HALO	13	9		1	3				
Total No. of Demining Teams (DTs)		159	67	9	12	27	15	8	12	9
Total No. of Mine Dog Sets (MDS)		52	11	7	4	6	9	4	8	3
Mine Dog Group (MDG)	MDC	6		4	2					
Total No. of Teams		6		4	2					
Mechanical Demining Unit (MDU)	ATC	4	1		1	1			1	
	DAFA	4		1			2			1
	OMAR	4					3	1		
	DDG	1	1							
	HALO	22	11		2	9				
Total No. of Teams		35	13	1	3	10	5	1	1	1
Landmine Impact Assessment Teams (LIAT)	MCPA	16	4	1	2	2	2	2	2	1
Landmine Impact Assessment Teams (LIAT)	HALO	6	3		1	2				
Total No. of Teams		22	7	1	4	7	2	2	2	1
Quality Management Inspection Teams (QMIT)	UNMACA	21	6	1	4	4	2	2	2	
Total No. of Teams		21	6	1	4	4	2	2	2	0
Explosive Ordnance Disposal Teams (EODT)	ATC	6	2		1	1			2	
	DAFA	3	1	1						1
	OMAR	2					1	1		
	MDC	2			1		1			
	MCPA	1							1	
	DDG	19	8		2	2	7			
	HALO	16	5		5	6				
	HALO-WAD	20	6		5	6	2	1		
UXB/WRA	7			1	2	3	1			
Total No. of Teams		76	22	1	15	17	14	2	2	1
Grand Total of Assets		371	126	13	42	62	38	19	19	12

Team Structure

(ATC, OMAR, DAFA, MDC & MCPA)

Ser No.	Title	Team Type									
		Demining Team (DT)		MDG	MDS	MDU	QMIT	EOD	LIAT	MRE	Remarks
		20 Lanes	10 Lanes								
1	Team Leader	1	1	1		1	1	1	1		
2	Deputy Team Leader	1						1			
3	Sections Leader	4	2	2							
4	Deminer	20	10	12							
5	Medics	2	1					1			
6	Set Leader				1						
7	Dog Handler			4	2						
8	MDU Operator					1					
9	EOD Operator							5			
10	Team Admin & Log	1	1								
11	Driver	4	3		1	1	1	2	1	1	
12	Guard	3	3					2	1		
13	MDU Mechanic					1					
14	Dog			4	3						
15	Team Member						1		1		
16	Instructor									2	
	Total	36	21	23	7	4	3	12	4	3	

(HALO, DDG , WRA)

Ser No.	Title	Team Type									
		HALO					DDG				WRA
		MCT	EOD	LIAT	MU (Note 1)	MRE	MCT	MDU	EOD	MRE	EOD
1	Team Leader	1	1	1	1	1	1	1	1		1
2	Deputy Team Leader	1	1		1						1
3	Sections Leader	2					3				
4	Deminer	22	6	2	6	1	18				
5	Medics		1	1	1		2		1		1
6	Set Leader										
7	Dog Handler										
8	MDU Operator							1			
9	EOD Operator								3		6
10	Team Admin & Log										
11	Driver			1	1	1	3		1	1	3 (Note 2)
12	Guard										1
13	MDU Mechanic							1			
14	Dog										
15	Team Member										
16	Instructor									2	
17	Labor										3 (Note 3)
	Total	26	9	5	10	3	27	3	6	3	16

Note 1: MU stands for Manual Unit previously called Technical Survey teams.

Note 2: 2 EOD Technician/driver and 1 Ambulance driver

Note 3: The labors are trained in EOD course as well.

HALO Trust mechanical teams structures vary from 2 to 7 people.

AMAC West
Operational Teamwise Plan 1386 (2007/08)

Region	Task Name	Cluster No.	Impact	Province	District	Village	Local Name	Confirmed	Land Type	Mine Type	Area Size (Sqm)	Remarks
West	Enjeel District of Herat Provin											
West	AF-2002/17610/MF-0366,039	5	High	Herat	Enjeel	Qala-I-Shater	Division-17	Yes	Residential	AP/UXO	70000	
West	AF/2002/17610/337		High	Herat	Enjeel	Qala-I-Shater	Division-17	Yes	Residential	AP/UXO	35000	
West	AF-2002/17610/MF-0382		High	Herat	Enjeel	Qala-I-Shater	Division-17	Yes	Residential	AP	71764	
West	AF-200/17610/BF-0389		High	Herat	Enjeel	Qala-I-Shater	Division-17	Yes	Residential	UXO	161974	
West	AF-2002/17610/MF-0386		High	Herat	Enjeel	Qala-I-Shater	Division-17	Yes	Residential	AP/UXO	67169	
West	AF-2002/17610/MF-0386		High	Herat	Enjeel	Qala-I-Shater	Division-17	Yes	Residential	AP/UXO	67169	
West	AF-2002/17590/MU-035	4	High	Herat	Enjeel	Ishaq-I-Salman	Armoured Force No-04	Yes	Agri-Land	BLU-97	7557	
West	AF-2002/17590/MU-039		High	Herat	Enjeel	Ishaq-I-Salman	Armoured Force No-04	Yes	Agri-Land	BLU-97	52638	
West	AF-2002/17610/MF-0382/038	5	High	Herat	Enjeel	Qala-I-Shater	Division-17	Yes	Residential	AP	Nil	
West	AF-2002/17610/0390/0386=E		High	Herat	Enjeel	Qala-I-Shater	Division-17	Yes	Residential	AP	Nil	
West	AF-2002/17610/MF-0337& M		High	Herat	Enjeel	Qala-I-Shater	Division-17	Yes	Residential	UXO	Nil	
West	AF-2002/17687/MF-0135	5	Low (Priority High)	Herat	Enjeel	Mahala-I-Jibrail	Sara-I-Dahst	Yes	Agri-Land	AT	72236	
West	AF/2002/17587/0165		Low (Priority High)	Herat	Enjeel	Mahala-I-Jibrail	Shaharak	Yes	Agri-Land	AT	43822	
West	AF-2002/17687/MF-0360		Low (Priority High)	Herat	Enjeel	Mahala-I-Jibrail	Shaharak	Yes	Residential	AT	41265	
West	AF-2002/17687/MF-0306		High	Herat	Enjeel	Mahala-I-Jibrail	Sara-I-Dahst	Yes	Residential	AT	70675	
West	AF-2002/Emergency Tasks	Nil	All	Herat	Enjeel	All	All	Yes	Residential	All	Nil	
West	AF-2002/17610/MF-0366,WR	5	High	Herat	Enjeel	Qala-I-Shater	Division-17	Yes	Residential	AP/Amm	Nil	
West	AF-2002/17610/0390/0382,038		High	Herat	Enjeel	Qala-I-Shater	Division-17	Yes	Residential	AP	138933	
West	AF-2002/17687/MF-0306	5	High	Herat	Enjeel	Mahala-I-Jibrail	Sara-I-Dahst	Yes	Residential	AT	70,675	
West	AF-2002/17590/MU-040	4	High	Herat	Enjeel	Ishaq-I-Salman	Armoured Force No-04	Yes	Agri-Land	BLU-97	32,000	
West	Guzarah District of Herat Pro											
West	AF-2003/17629/0097	2	Low/Priority High	Herat	Guzarah	Ziaratja	Zamin-I-Beker Bayar	Yes	Grazing Area	AT	143,334	
West	AF-2003/17629/0097		Low/Priority High	Herat	Guzarah	Ziaratja	Zamin-I-Beker Bayar	Yes	Grazing Area	AT	143,334	
West	AF-2003/Emergency Tasks	Nil	All	Herat	Guzarah	All	All	Yes	Residential	UXO	Nil	
West	AF-2003/17626/MF-	5	Low/Priority High	Herat	Guzarah	Mir Daud	Cholongay	Yes	Grazing Area	AP	35335	
West	AF-2003/17626/BF-0099		Low/Priority High	Herat	Guzarah	Mir Daud	Cholongay	Yes	Grazing Area	UXO	314108	
West	AF-2003/17626/MF-		Low/Priority High	Herat	Guzarah	Mir Daud	Cholongay	Yes	Grazing Area	AP	Nil	
West	Kohsan District of Herat											
West	AF-2008/00000/MF-0142	5	Low/Priority High	Herat	Kohsan	Chah Raig	Posta-I-921 Sarhadi	Yes	Residential	AP	70000	
West	AF-2008/00000/MF-		Low/Priority High	Herat	Kohsan	Chah Raig	Posta-I-921 Sarhadi	Yes	Residential	AP	70000	
West	AF-2008/00000/0148		Low/Priority High	Herat	Kohsan	Chah Raig	Posta-I-921 Sarhadi	Yes	Residential	AP	40000	
West	AF-2008/18353/0149		Medium	Herat	Kohsan	Islam Qala	Qala-I-Goshna	Yes	Grazing Area	AT	100000	
West	AF-2008/18353/MF-0143	1	Medium	Herat	Kohsan	Islam Qala	Qala-I-Goshna	Yes	Grazing Area	AT	150000	
West	AF-2008/00000/MF-0136	3	High	Herat	Kohsan	Sar-I-Raig	Sar-I-Raig	Yes	Grazing Area	AT	125631	
West	AF-2008/00000/MF-0136		High	Herat	Kohsan	Sar-I-Raig	Sar-I-Raig	Yes	Grazing Area	AT	125631	
West	AF-2008/00000/0137		High	Herat	Kohsan	Sar-I-Raig	Sar-I-Raig	Yes	Grazing Area	AT	148952	
West	AF-2008/18355/MF-0069	1	Low/Priority High	Herat	Kohsan	Kalata-I-Nayeb Ghafor	Kalata-I-Nayeb Ghafor	Yes	Grazing Area	AP	46536	
West	AF-2008/18355/MF-		Low/Priority High	Herat	Kohsan	Kalata-I-Nayeb Ghafor	Kalata-I-Nayeb Ghafor	Yes	Grazing Area	AP	84290	
West	AF-2008/18355/MF-0073		Low/Priority High	Herat	Kohsan	Kalata-I-Nayeb Ghafor	Kalata-I-Nayeb Ghafor	Yes	Grazing Area	AP	37454	
West	AF-2008/Village by Village	Nil	High,Medium,Low	Herat	Kohsan	All	All	Yes	Residential	UXO	Nil	
West	AF-	5	Low/Priority High	Herat	Kohsan	Chah Raig	Posta-I-921 Sarhadi	Yes	Residential	AP	70000	
West	AF-2008/18355/MF-	1	Low/Priority High	Herat	Kohsan	Kalata-I-Nayeb Ghafor	Kalata-I-Nayeb Ghafor	Yes	Grazing Area	AP	84290	
West	Ghoryan District of Herat											
West	AF-2009/Village by Village	Nil	High,Medium,Low	Herat	Ghoryan	All	All	Yes	Residential	UXO	Nil	

Region	Task Name	Cluster No.	Impact	Province	District	Village	Local Name	Confirmed	Land Type	Mine Type	Area Size (Sqm)	Remarks
West	Shindand District of Heart											
West	AF-2014/18813/MF-0087	1	High	Herat	Shindand	Chambaran	Division-21	Yes	Grazing Area	AP	55567	
West	AF-2014/18813/MF-		High	Herat	Shindand	Chambaran	Division-21	Yes	Grazing Area	AP	Nil	
West	AF-2014/18813/MF-		High	Herat	Shindand	Chambaran	Division-21	Yes	Grazing Area	AP	55567	
West	AF-2014/18813/MF-		High	Herat	Shindand	Chambaran	Division-21	Yes	Grazing Area	AP	55567	
West	Qala-I-Naw District of											
West	AF-1901/31782/MF-0037	1	High	Badghis	Qala-I-Naw	Qala-I-Naw	Khwaja Jir Khushk	Yes	Grazing Area	AP	4833	
West	AF-1901/31782/MF-0038		High	Badghis	Qala-I-Naw	Qala-I-Naw	Khwaja Jir Khushk	Yes	Grazing Area	AP	854	
West	AF-1901/31782/MF-0039		High	Badghis	Qala-I-Naw	Qala-I-Naw	Khwaja Jir Khushk	Yes	Grazing Area	AP	6900	
West	AF-1901/31782/MF-0040		High	Badghis	Qala-I-Naw	Qala-I-Naw	Khwaja Jir Khushk	Yes	Grazing Area	AP	2800	
West	AF-1901/16842/MF-0031		Low/High Priority	Badghis	Qala-I-Naw	Tagab-I-Ulya	Sar Chashma Ha	Yes	Agri-Land	AP	25576	
West	AF-1901/31789/0035		Medium	Badghis	Qala-I-Naw	Qala-I-Naw	Qala-I-Naw Airport	Yes	Residential	UXO	44900	
West	19/1901/00082/0033		Medium	Badghis	Qala-I-Naw	Qala-I-Naw	Kharistan	Yes	Agri-Land	AP	12463	
West	AF-1901/16842/MF-		Low/High Priority	Badghis	Qala-I-Naw	Tagab-I-Ulya	Sar Chashma	Yes	Agri-Land	AP	25576	

AMAC Center
Operational Taskwise Plan 1386 (2007/08)

Region	Task Name	Cluster No.	Impact	Province	District	Village	Confirmed	Land Type	Mine Type	Area Size (Sqm)	Remarks
CA	AF/0101/00000/SHA		M	Kabul	Kabul City	Bala Kohe Karta-I-Parwan	Yes	Pastur	AP	40,300	
CA	AF/0101/00000/SHA		M	Kabul	Kabul City		Yes	Pastur	AP	70,000	
CA	AF/0101/00000/SHA		H	Kabul	Kabul City	Qala-I- Fatooh	Yes	Ag	AP	120,000	
CA	AF/0101/00000/SHA		H	Kabul	Kabul City	Qala-I-Qazi	Yes	Ag	AP	3,750	
CA	AF/0101/00000/SHA		H	Kabul	Kabul City	Aqebe Zearat u Sakhy	Yes	Pastur	AP	62475	
CA	AF/0101/00000/SHA		M	Kabul	Kabul City	Aqebe Zearat u Sakhy	Yes	Ag	AP	100,000	
CA	AF/0101/00000/SHA		H	Kabul	Kabul City	Bala Kohi Qala-e-Hazara Ha	Yes	Pastur	AP,UXO	90,000	
CA	AF/0101/00000/SHA		M	Kabul	Kabul City	Afshar Bala	Yes	Pastur	AP,UXO	300,000	
CA	AF/0101/00000/SHA		M	Kabul	Kabul City	Lewa Peyada 055	Yes	Pastur	Ap	120,000	
CA	AF/0101/00000/SHA		M	Kabul	Kabul City	Gardana-I-Bagh-I-Bala	Yes	Ag	AP	120,000	
CA	AF/0101/00000/SHA		M	Kabul	Kabul City	Poli Artal	Yes	River	UXO	288,576	
CA	AF/0101/00000/SHA		H	Kabul	Kabul City	Zalmu Restaurant	Yes	Pastur	AP	300,000	
CA	AF/0101/00000/SHA		M	Kabul	Kabul City	Makhzane- I- Deh Afghan	Yes	Pastur	AP	80,000	
CA	AF/0101/00000/SHA		H	Kabul	Kabul City	Aqibi Ali Abad	Yes	Pastur	AP	40,000	
CA	AF/0101/00000/SHA		M	Kabul	Kabul City	Qala-I-Muhib	Yes	Ag	AP	50,000	
CA	AF/0102/00647/SHA		M	Kabul	Dih Sabz	Qal'eh-ye Entefat	Yes	Pastur	AP	100,000	
CA	AF/0102/00647/SHA		M	Kabul	Dih Sabz	Qal'eh-ye Entefat	Yes	Pastur	AP	210,000	
CA	AF/0102/00647/SHA		M	Kabul	Dih Sabz	Qal'eh-ye Entefat	Yes	Pastur	AP	80,000	
CA	AF/0102/00647/SHA		M	Kabul	Dih Sabz	Qal'eh-ye Entefat	Yes	Ag	AP	140,000	
CA	AF/0102/00329/SHA		M	Kabul	Dih Sabz	Qal'eh-ye Entefat	Yes	Ag	AP	114,075	
CA	AF/0102/00329/SHA		M	Kabul	Dih Sabz	Tarakhel	Yes	Pastur	AP	112,000	
CA	AF/0102/00329/SHA		H	Kabul	Dih Sabz	Tarakhel	Yes	Pastur	AP,UXO	3,594,625	
CA	AF/0102/00328/SHA		M	Kabul	Dih Sabz	Baba Qashkhar	Yes	Road	AP,AT	198,900	
CA	AF/0102/00328/SHA		H	Kabul	Dih Sabz	Baba Qashkhar	Yes	Road	AP,AT	95,400	
CA	AF/0102/00328/SHA		M	Kabul	Dih Sabz	Baba Qashkhar	Yes	Ag	AP,UXO	182,400	
CA	AF/0102/00314/SHA		M	Kabul	Dih Sabz	Khwaja Chesht	Yes	Pastur	AP	192,700	
CA	AF/0102/00652/SHA		H	Kabul	Dih Sabz	Daneshmand	Yes	Pastur	AP	7,500	
CA	AF/0102/00652/SHA		M	Kabul	Dih Sabz	Daneshmand	Yes	Pastur	AP	20,000	
CA	AF/0102/00652/SHA		M	Kabul	Dih Sabz	Daneshmand	Yes	Pastur	AP	20,000	
CA	AF/0102/00652/SHA		M	Kabul	Dih Sabz	Daneshmand	Yes	Pastur	AP	20,000	
CA	AF/0102/00652/SHA		M	Kabul	Dih Sabz	Daneshmand	Yes	Pastur	AP	25,000	
CA	AF/0102/00652/SHA		M	Kabul	Dih Sabz	Daneshmand	Yes	Pastur	AP	26,950	
CA	AF/0102/00339/SHA		H	Kabul	Dih Sabz	Tangi Gharo	Yes	Pastur	AP	166,400	
CA	AF/0102/00339/SHA		H	Kabul	Dih Sabz	Tangi Gharo	Yes	Pastur	AP	280,000	
CA	AF/0102/00339/SHA		H	Kabul	Dih Sabz	Tangi Gharo	Yes	Pastur	AP	10,125	
CA	AF/0102/00347/SHA		M	Kabul	Dih Sabz	Chenar	Yes	Pastur	AP	3,078	
CA	AF/0102/00347/SHA		M	Kabul	Dih Sabz	Chenar	Yes	Pastur	AP	2,382	
CA	AF/0102/00347/SHA		M	Kabul	Dih Sabz	Chenar	Yes	Pastur	AP	4,404	
CA	AF/0102/00347/SHA		M	Kabul	Dih Sabz	Chenar	Yes	Pastur	AP	10,862	
CA	AF/0108/00563/SHA		H	Kabul	Paghman	Darrah-ye Keshta	Yes	Ag	AP,UXO	100,000	
CA	AF/0108/00579/SHA		H	Kabul	Paghman	Somochak	Yes	Ag	AP,UXO	75,000	

Region	Task Name	Cluster No.	Impact	Province	District	Village	Confirmed	Land Type	Mine Type	Area Size (Sqm)	Remarks
CA	AF/0108/00579/SHA		H	Kabul	Paghman	Somochak	Yes	Ag	AP,UXO	100,000	
CA	AF/0108/00560/SHA		H	Kabul	Paghman	Qal'eh-ye Badal	Yes	Ag	AP,UXO	231,000	
CA	AF/0108/00560/SHA		H	Kabul	Paghman	Qal'eh-ye Badal	Yes	Ag	AP,UXO	37,500	
CA	AF/0108/00560/SHA		M	Kabul	Paghman	Qal'eh-ye Badal	Yes	Ag	AP,UXO	400,000	
CA	AF/0108/00560/SHA		H	Kabul	Paghman	Qal'eh-ye Badal	Yes	Ag	AP,UXO	102,500	
CA	AF/0108/00543/SHA		M	Kabul	Paghman	Qala Malekha (Pashaiee)	Yes	Pastur	AP,UXO	30,000	
CA	AF/0108/00539/SHA		H	Kabul	Paghman	Tambana	Yes	Ag	AP	123,000	
CA	AF/0108/00000/SHA		M	Kabul	Paghman	Soorqul	Yes	Pastur	AP	100,000	
CA	AF/0108/00000/SHA		M	Kabul	Paghman	Soorqul	Yes	Pastur	AP	40,000	
CA	AF/0108/00000/SHA		M	Kabul	Paghman	Soorqul	Yes	Pastur	AP	105,000	
CA	AF/0108/00000/SHA		M	Kabul	Paghman	Deh-e Pumba	Yes	Road	AT,AP,UXO	280,000	
CA	AF/0109/02182/SHA		M	Kabul	Chahar Asyab	Syahcho	Yes	Ag	AP,UXO	103,950	
CA	AF/0109/02182/SHA		M	Kabul	Chahar Asyab	Syahcho	Yes	Ag	AP,UXO	74,800	
CA	AF/0109/02182/SHA		M	Kabul	Chahar Asyab	Syahcho	Yes	Ag	AP	115,200	
CA	AF/0109/02182/SHA		M	Kabul	Chahar Asyab	Syahcho	Yes	Ag	AP,UXO	117,000	
CA	AF/0109/00173/SHA		H	Kabul	Chahar Asyab	Tangee Sayidan	Yes	Ag	AP	97,875	
CA	AF/0109/00173/SHA		H	Kabul	Chahar Asyab	Tangee Sayidan	Yes	Ag	AP	50,625	
CA	AF/0109/02166/SHA		H	Kabul	Chahar Asyab	Lalandar	Yes	Ag	AP	398,592	
CA	AF/0109/02166/SHA		H	Kabul	Chahar Asyab	Lalandar	Yes	Ag	AP	1,500	
CA	AF/0109/00230/SHA		M	Kabul	Chahar Asyab	Shahtut	Yes	Ag	AP	33,750	
CA	AF/0109/00230/SHA		H	Kabul	Chahar Asyab	Shahtut	Yes	Ag	AP	544,500	
CA	AF/0109/00171/SHA		H	Kabul	Chahar Asyab	Qalah-e-Said Jan	Yes	Ag	AP,UXO	5,612	
CA	AF/0109/00095/SHA		H	Kabul	Bagrami	Welayati Ulya	Yes	Ag	AP,UXO	291,600	
CA	AF/0110/00082/SHA		H	Kabul	Bagrami	Qala-l- Hashmatkhan	Yes	Pastur	AP,UXO	180,000	
CA	AF/0110/00000/SHA		H	Kabul	Bagrami	Charkh-e-Aab	Yes	Pastur	AP,UXO	450,000	
CA	AF/0110/00145/SHA		M	Kabul	Khaki Jabbar	Chakari	Yes	Ag	AP	157,824	
CA	AF/0110/00145/SHA		M	Kabul	Khaki Jabbar	Chakari	Yes	Pastur	AP	93,312	
CA	AF/0110/00145/SHA		M	Kabul	Khaki Jabbar	Chakari	Yes	Pastur	AP	185,220	
CA	AF/0110/00145/SHA		M	Kabul	Khaki Jabbar	Chakari	Yes	Road	AT	6,000	
CA	AF/0110/00145/SHA		M	Kabul	Khaki Jabbar	Chakari	Yes	Road	AT	300,000	
CA	AF/0110/00145/SHA		M	Kabul	Khaki Jabbar	Chakari	Yes	Ag	AT	12,150	
CA	AF/0110/00145/SHA		M	Kabul	Khaki Jabbar	Chakari	Yes	Ag	AP	13,612	
CA	AF/0110/00145/SHA		M	Kabul	Khaki Jabbar	Chakari	Yes	Pastur	AP	9,000	
CA	AF/0110/00145/SHA		M	Kabul	Khaki Jabbar	Chakari	Yes	Pastur	AP	145,200	
CA	AF/0110/00145/SHA		M	Kabul	Khaki Jabbar	Chakari	Yes	Road	AP,AT	140,625	
CA	AF/0110/00000/SHA		H	Kabul	Khaki Jabbar	Natookhel & Sewak	Yes	Ag	AP	60,000	
CA	AF/0110/00000/SHA		M	Kabul	Khaki Jabbar	Chalaw(Woli Khel)	Yes	Pastur	AP,UXO	353,200	
CA	AF/0110/00150/SHA		H	Kabul	Khaki Jabbar	Khurd Kabul	Yes	Pastur	AP	180,000	
CA	AF/0110/00150/SHA		M	Kabul	Khaki Jabbar	Khurd Kabul	Yes	Ag	AP	60,000	
CA	AF/0110/00150/SHA		M	Kabul	Khaki Jabbar	Khurd Kabul	Yes	Ag	AP	180,000	
CA	AF/0112/00371/SHA		M	Kabul	Surobi	Jegdalay	Yes	Road	AP,AT	51,250	
CA	AF/0112/00371/SHA		M	Kabul	Surobi	Jegdalay	Yes	Pastur	AP	30,000	
CA	AF/0112/00371/SHA		M	Kabul	Surobi	Jegdalay	Yes	Pastur	AP	100,500	
CA	AF/0112/00371/SHA		M	Kabul	Surobi	Jegdalay	Yes	Road	AP,AT	36,800	

Region	Task Name	Cluster No.	Impact	Province	District	Village	Confirmed	Land Type	Mine Type	Area Size (Sqm)	Remarks
CA	AF/0112/00413/SHA		M	Kabul	Surobi	Kace Sherkhan	Yes	Pastur	AP	100,000	
CA	AF/0112/00413/SHA		M	Kabul	Surobi	Kace Sherkhan	Yes	Pastur	AP	97,500	
CA	AF/0112/00413/SHA		M	Kabul	Surobi	Kace Sherkhan	Yes	Ag	AP	80,000	
CA	AF/0112/00413/SHA		M	Kabul	Surobi	Kace Sherkhan	Yes	Ag	AP	97,500	
CA	AF/0112/00413/SHA		M	Kabul	Surobi	Kace Sherkhan	Yes	Ag	AP	355,000	
CA	AF/0112/00413/SHA		M	Kabul	Surobi	Kace Sherkhan	Yes	Pastur	AP	74,025	
CA	AF/0112/00413/SHA		M	Kabul	Surobi	Kace Sherkhan	Yes	Pastur	AP	89,700	
CA	AF/0112/00166/SHA		M	Kabul	Surobi	Qafas Kalay	Yes	Pastur	AP	223,900	
CA	AF/0112/00166/SHA		M	Kabul	Surobi	Qafas Kalay	Yes	Ag	AP	93,300	
CA	AF/0112/00166/SHA		M	Kabul	Surobi	Qafas Kalay	Yes	Ag	AP	73,600	
CA	AF/0112/00166/SHA		H	Kabul	Surobi	Qafas Kalay	Yes	Ag	AP	67,200	
CA	AF/0112/00372/SHA		H	Kabul	Surobi	Farmanbeg	Yes	Road	AT	132,000	
CA	AF/0112/00372/SHA		M	Kabul	Surobi	Farmanbeg	Yes	Road	AT	29,150	
CA	AF/0112/00000/SHA		M	Kabul	Surobi	Khowandi	Yes	Pastur	AP	36500	
CA	AF/0112/00000/SHA		M	Kabul	Surobi	Khowandi	Yes	Pastur	AP	507,500	
CA	AF/0112/00000/SHA		M	Kabul	Surobi	Khowandi	Yes	Pastur	AP	203,000	
CA	AF/0112/00000/SHA		M	Kabul	Surobi	Khowandi	Yes	Pastur	AP	120,050	
CA	AF/0112/00000/SHA		M	Kabul	Surobi	Khowandi	Yes	Pastur	AP	118,800	
CA	AF/0201/00000/SHA		H	Kapisa	Mahmud Raqi	Shokhi	Yes	Ag	AP	173,900	
CA	AF/0201/00000/SHA		H	Kapisa	Mahmud Raqi	Shokhi	Yes	Ag	AP	10,500	
CA	AF/0201/00000/SHA		H	Kapisa	Mahmud Raqi	Shokhi	Yes	Ag	AP	42,787	
CA	AF/0201/00000/SHA		H	Kapisa	Mahmud Raqi	Shokhi	Yes	Ag	AP	398,250	
CA	AF/0201/00000/SHA		H	Kapisa	Mahmud Raqi	Shokhi	Yes	Ag	AP	192,300	
CA	AF/0201/00000/SHA		H	Kapisa	Mahmud Raqi	Shokhi	Yes	Ag	AP	565,950	
CA	AF/0201/00000/SHA		H	Kapisa	Mahmud Raqi	Shokhi	Yes	Ag	AP	18,000	
CA	AF/0201/00789/SHA		L	Kapisa	Mahmud Raqi	Qala e Naw Aroki	Yes	Ag	AP	5,900	
CA	AF/0201/00789/SHA		M	Kapisa	Mahmud Raqi	Qala e Naw Aroki	Yes	Pastur	AP	21,032	
CA	AF/0201/00789/SHA		H	Kapisa	Mahmud Raqi	Qala e Naw Aroki	Yes	Pastur	AP	62,750	
CA	AF/0202/01073/SHA		H	Kapisa	Kohistan	Muri	Yes	Pastur	AP	228,400	
CA	AF/0202/01073/SHA		H	Kapisa	Kohistan	Muri	Yes	Pastur	AP	342,450	
CA	AF/0202/00978/SHA		H	Kapisa	Kohistan	Mianadeh	Yes	Ag	AP	240,000	
CA	AF/0202/01184/SHA		H	Kapisa	Kohistan	Rabat	Yes	Ag	AP	319,275	
CA	AF/0202/01010/SHA		L	Kapisa	Kohistan	Dehe Kham-zargar	Yes	Ag	AP	50,000	
CA	AF/0202/01010/SHA		L	Kapisa	Kohistan	Dehe Kham-zargar	Yes	Pastur	AP	428,400	
CA	AF/0204/01088/SHA		H	Kapisa	Nijrab	Salakhel	Yes	Pastur	AP	61,000	
CA	AF/0204/01129/SHA		H	Kapisa	Nijrab	Feroza'i	Yes	Pastur	AP	182,400	
CA	AF/0204/00000/SHA		H	Kapisa	Nijrab	Ayan khail	Yes	Pastur	AP	70,400	
CA	AF/0204/01041/SHA		L	Kapisa	Nijrab	Tarang Sara	Yes	Ag	AP	45,000	
CA	AF/0204/01041/SHA		H	Kapisa	Tagab	Kora	Yes	Ag	AP	370,575	
CA	AF/0301/00000/SHA		L	Parwan	Chaharikar	Saeed Ali Khil	Yes	Ag	AP	100,000	
CA	AF/0301/00000/SHA		L	Parwan	Chaharikar	Saeed Ali Khil	Yes	Ag	AP	170,000	
CA	AF/0301/00000/SHA		L	Parwan	Chaharikar	Saeed Ali Khil	Yes	Pastur	AP	70,000	
CA	AF/0301/01658/SHA		M	Parwan	Chaharikar	Qal'eh-ye Beland	Yes	Pastur	AP	40,000	
CA	AF/0301/01658/SHA		L	Parwan	Chaharikar	Qal'eh-ye Beland	Yes	Pastur	AP	14,600	

Region	Task Name	Cluster No.	Impact	Province	District	Village	Confirmed	Land Type	Mine Type	Area Size (Sqm)	Remarks
CA	AF/0301/01658/SHA		L	Parwan	Chaharikar	Qal'eh-ye Beland	Yes	Pastur	AP	660	
CA	AF/0301/01379/SHA		L	Parwan	Chaharikar	Khwaja-Sayaran Sufla	Yes	Pastur	AP	2,817	
CA	AF/0301/01379/SHA		M	Parwan	Chaharikar	Khwaja-Sayaran Sufla	Yes	Ag	AP	1,466	
CA	AF/0301/01389/SHA		L	Parwan	Chaharikar	Charmgary	Yes	Ag	AP	675	
CA	AF/0301/01389/SHA		L	Parwan	Chaharikar	Charmgary	Yes	Ag	AP	2,350	
CA	AF/0301/01389/SHA		L	Parwan	Chaharikar	Charmgary	Yes	Ag	AP	1,200	
CA	AF/0301/01420/SHA		M	Parwan	Chaharikar	Bayani Bala	Yes	Ag	AP	2,200	
CA	AF/0301/01420/SHA		M	Parwan		Bayani Bala	Yes	housing	AP	240	
CA	AF/0301/01420/SHA		M	Parwan	Chaharikar	Bayani Bala	Yes	Ag	AP	200	
CA	AF/0308/01656/SHA		M	Parwan	Bagram	Sayghani	Yes	garden	AP	760,000	
CA	AF/0308/00781/SHA		H	Parwan	Bagram	Rogamati	Yes	housing	AP	10,000	
CA	AF/0308/00781/SHA		M	Parwan	Bagram	Rogamati	Yes	Pastur	AP	1,500	
CA	AF/0308/00781/SHA		L	Parwan		Rogamati	Yes	Pastur	AP	120,000	
CA	AF/0308/00767/SHA		L	Parwan	Bagram	Qaracha	Yes	Ag	AP	80,000	
CA	AF/0308/00767/SHA		H	Parwan	Bagram	Qaracha	Yes	Ag	AP	105,000	
CA	AF/0308/001635/SHA		H	Parwan	Bagram	Qal'eh-ye Ahmadkhan	Yes	Pastur	AP	500,000	
CA	AF/0308/001635/SHA		H	Parwan	Bagram	Qal'eh-ye Ahmadkhan	Yes	Pastur	AP	600,000	
CA	AF/0308/001635/SHA		H	Parwan	Bagram	Qal'eh-ye Ahmadkhan	Yes	Pastur	AP	1,100,000	
CA	AF/0308/001635/SHA		L	Parwan		Qal'eh-ye Ahmadkhan	Yes	Pastur	AP	2,250,000	
CA	AF/0308/001634/SHA		H	Parwan	Bagram	Payan Janqadam	Yes	Pastur	AP	10,000	
CA	AF/0308/001587/SHA		M	Parwan	Bagram	Pasha'i	Yes	Pastur	AP	216,000	
CA	AF/0308/00000/SHA		L	Parwan	Bagram	Pakistanak	Yes	Pastur	AP	200,000	
CA	AF/0308/00000/SHA		M	Parwan	Bagram	Pakistanak	Yes	Pastur	AP	500,000	
CA	AF/0308/00000/SHA		M	Parwan	Bagram	Mahigir	Yes	Pastur	AP	200	
CA	AF/0308/00000/SHA		H	Parwan	Bagram	Mahigir	Yes	Pastur	AP	19,350	
CA	AF/0308/00000/SHA		M	Parwan	Bagram	Ashrafkhel	Yes	Ag	AP	210,000	
CA	AF/0308/00000/SHA		M	Parwan	Bagram	Takhcha	Yes	Ag	AP	159,000	
CA	AF/0308/00000/SHA		H	Parwan	Bagram	Se Dokan	Yes	Pastur	AP	50,000	
CA	AF/0308/00778/SHA		H	Parwan	Bagram	Quchqar	Yes	Pastur	AP	200,000	
CA	AF/0308/01635/SHA		M	Parwan	Bagram	Qal'eh-ye Yozbashi	Yes	Pastur	AP	300,000	
CA	AF/0308/01624/SHA		L	Parwan	Bagram	Qal'eh-ye Golay	Yes	housing	AP	300,000	
CA	AF/0308/01624/SHA		M	Parwan	Bagram	Qal'eh-ye Golay	Yes	housing	AP	300,000	
CA	AF/0308/01624/SHA		M	Parwan		Qal'eh-ye Golay	Yes	housing	AP	300,000	
CA	AF/0308/01649/SHA		M	Parwan	Bagram	Mahtabkhel	Yes	housing	AP	400	
CA	AF/0308/01663/SHA		L	Parwan	Bagram	Kharoti	Yes	Pastur	AP	50,750	
CA	AF/0308/01663/SHA		L	Parwan	Bagram	Kharoti	Yes	Ag	AP	24,000	
CA	AF/0308/01663/SHA		H	Parwan	Bagram	Kharoti	Yes	Ag	AP	75,000	
CA	AF/0308/01663/SHA		L	Parwan	Bagram	Kharoti	Yes	Ag	AP	72,000	
CA	AF/0308/01663/SHA		L	Parwan	Bagram	Kharoti	Yes	Ag	AP	3,000	
CA	AF/0308/01663/SHA		L	Parwan	Bagram	Kharoti	Yes	Pastur	AP	3,000	
CA	AF/0308/01663/SHA		L	Parwan	Bagram	Kharoti	Yes	Pastur	AP	380,000	
CA	AF/0308/01663/SHA		L	Parwan	Bagram	Kharoti	Yes	Pastur	AP	337,550	
CA	AF/0308/00000/SHA		M	Parwan	Bagram	Khanaqa	Yes	Ag	AP	20,000	
CA	AF/0308/00000/SHA		M	Parwan	Bagram	Khanaqa	Yes	Ag	AP	90,000	

Region	Task Name	Cluster No.	Impact	Province	District	Village	Confirmed	Land Type	Mine Type	Area Size (Sqm)	Remarks
CA	AF/0308/00000/SHA		M	Parwan	Bagram	Deh-e Harzara	Yes	Ag	AP	800	
CA	AF/0308/00000/SHA		M	Parwan	Bagram	Aroki	Yes	Ag	AP	200,000	
CA	AF/0308/00000/SHA		H	Parwan	Bagram	Akakhel	Yes	Ag	AP	255,870	
CA	AF/0308/00000/SHA		L	Parwan	Bagram	Akakhel	Yes	Pastur	AP	20,000	
CA	AF/0308/01623/SHA		M	Parwan	Bagram	Laghmani Kuhna	Yes	Ag	AP	12,000	
CA	AF/0308/01623/SHA		L	Parwan	Bagram	Laghmani Kuhna	Yes	Pastur	AP	8,000	
CA	AF/0308/01623/SHA		L	Parwan	Bagram	Laghmani Kuhna	Yes	housing	AP	200	
CA	AF/0308/01650/SHA		L	Parwan	Bagram	Jafarkhel	Yes	housing	AP	1,972	
CA	AF/0308/01650/SHA		L	Parwan	Bagram	Jafarkhel	Yes	Road	AT	7,200	
CA	AF/0308/01662/SHA		M	Parwan	Bagram	Chenza'i	Yes	Pastur	AP	15,000	
CA	AF/0308/01662/SHA		L	Parwan	Bagram	Chenza'i	Yes	Pastur	AP	10,725	
CA	AF/0308/01629/SHA		M	Parwan	Bagram	Chawni	Yes	Ag	AP	47,000	
CA	AF/0308/01648/SHA		L	Parwan	Bagram	Bakhshikhel	Yes	Ag	AP	10,000	
CA	AF/0308/01648/SHA		L	Parwan	Bagram	Bakhshikhel	Yes	Ag	AP	600	
CA	AF/0308/01648/SHA		H	Parwan	Bagram	Bakhshikhel	Yes	Ag	AP	10,332	
CA	AF/0501/04005/SHA		M	Logar	Puli Alam	Babus (1)	Yes	Pastur	AP	1,700,000	
CA	AF/0501/04005/SHA		H	Logar		Babus (1)	Yes	Pastur	AP	900,000	
CA	AF/0501/04005/SHA		H	Logar	Puli Alam	Babus (1)	Yes	Pastur	AP	1,000,000	
CA	AF/0501/04005/SHA		H	Logar	Puli Alam	Babus (1)	Yes	housing	AP	150,000	
CA	AF/0501/04037/SHA		L	Logar	Puli Alam	Altamur	Yes	Pastur	AP	212,830	
CA	AF/0501/04037/SHA		M	Logar	Puli Alam	Altamur	Yes	Pastur	AP	151,086	
CA	AF/0501/04037/SHA		L	Logar	Puli Alam	Altamur	Yes	Pastur	AP	70,000	
CA	AF/0501/04037/SHA		L	Logar	Puli Alam	Altamur	Yes	Pastur	AP	10,000	
CA	AF/0501/04037/SHA		L	Logar	Puli Alam	Altamur	Yes	Pastur	AP	6,000	
CA	AF/0501/04037/SHA		L	Logar	Puli Alam	Altamur	Yes	Pastur	AP	185,670	
CA	AF/0501/03980/SHA		L	Logar	Puli Alam	Dadokhel	Yes	Pastur	AP	836,000	
CA	AF/0501/03980/SHA		L	Logar	Puli Alam	Dadokhel	Yes	Pastur	AP	175,968	
CA	AF/0501/03980/SHA		L	Logar	Puli Alam	Dadokhel	Yes	Pastur	AP	533,205	
CA	AF/0501/03980/SHA		L	Logar	Puli Alam	Dadokhel	Yes	Pastur	AP	61,740	
CA	AF/0501/03980/SHA		L	Logar	Puli Alam	Dadokhel	Yes	Ag	AP	46,304	
CA	AF/0501/03980/SHA		M	Logar	Puli Alam	Dadokhel	Yes	Ag	AP	2,527,510	
CA	AF/0501/03980/SHA		L	Logar	Puli Alam	Abchakan	Yes	Pastur	AP	277,025	
CA	AF/0502/00000/SHA		M	Logar	Charkh	Garmaba (Fazal Haq's village)	Yes	Pastur	AP	680,000	
CA	AF/0504/03713/SHA		L	Logar	Khushi	Mohammad Yar village.	Yes	Pastur	AP	1,185,000	
CA	AF/0504/03713/SHA		L	Logar	Khushi	Mohammad Yar village.	Yes	Ag	AP	315,000	
CA	AF/0504/03713/SHA		H	Logar	Khushi	Mohammad Yar village.	Yes	Ag	AP	812,500	
CA	AF/0504/03715/SHA		M	Logar	Khushi	Arat	Yes	Ag	AP	76,800	
CA	AF/0504/03715/SHA		M	Logar	Khushi	Kariz-I-Sultan Khel	Yes	Ag	AP	756000	
CA	AF/0504/03715/SHA		M	Logar	Khushi	Kariz-I-Sultan Khel	Yes	Ag	AP	24310	
CA	AF/0504/03697/SHA		L	Logar	Khushi	Chenari	Yes	Ag	AP	30000	
CA	AF/0504/03697/SHA		L	Logar	Khushi	Chenari	Yes	Pastur	AP	95625	
CA	AF/0505/03852/SHA		L	Logar	Muhammad Ag	Sorkh Ab	Yes	Ag	AP	787500	
CA	AF/0505/03852/SHA		M	Logar	Muhammad Ag	Sorkh Ab	Yes	Ag	AP	660000	
CA	AF/0505/03852/SHA		M	Logar	Muhammad Ag	Pache	Yes	Ag	AP	115600	

Region	Task Name	Cluster No.	Impact	Province	District	Village	Confirmed	Land Type	Mine Type	Area Size (Sqm)	Remarks
CA	AF/0505/03852/SHA		L	Logar	Muhammad Ag	Pache	Yes	Ag	AP	150000	
CA	AF/0505/03853/SHA		M	Logar	Muhammad Ag	Mazgin	Yes	Ag	AP	140000	
CA	AF/0505/03820/SHA		M	Logar	Muhammad Ag	Lashkar Khail	Yes	Ag	AP	194560	
CA	AF/0505/03820/SHA		M	Logar	Muhammad Ag	Lashkar Khail	Yes	Ag	AP	166896	
CA	AF/0505/03908/SHA		M	Logar	Muhammad Ag	Gomaran	Yes	Ag	AP	46537	
CA	AF/0505/03908/SHA		L	Logar	Muhammad Ag	Gomaran	Yes	Ag	AP	102208	
CA	AF/0505/03897/SHA		L	Logar	Muhammad Ag	Ghulam Khan	Yes	Ag	AP	299025	
CA	AF/0505/03839/SHA		L	Logar	Muhammad Ag	Shash Qala bala	Yes	Ag	AP	1035000	
CA	AF/0505/03839/SHA		L	Logar	Muhammad Ag	Shash Qala bala	Yes	Ag	AP	1500000	
CA	AF/0505/03839/SHA		L	Logar	Muhammad Ag	Shash Qala bala	Yes	Ag	AP	479700	
CA	AF/0505/03839/SHA		M	Logar	Muhammad Ag	Shash Qala bala	Yes	Ag	AP	405000	
CA	AF/0505/03839/SHA		L	Logar	Muhammad Ag	Shash Qala bala	Yes	Ag	AP	180000	
CA	AF/0505/03819/SHA		M	Logar	Muhammad Ag	Qaleh-ye Shekhak	Yes	Ag	AP	680	
CA	AF/0505/03851/SHA		M	Logar	Muhammad Ag	Qaleh-ye Padshah	Yes	Ag	AP	3600000	
CA	AF/0505/03896/SHA		M	Logar	Muhammad Ag	Nyazgul	Yes	Ag	AP	177536	
CA	AF/0505/03818/SHA		L	Logar	Muhammad Ag	Mola Bahadur	Yes	Ag	AP	160000	
CA	AF/0505/03818/SHA		L	Logar	Muhammad Ag	Mola Bahadur	Yes	Ag	AP	224000	
CA	AF/0505/03818/SHA		L	Logar	Muhammad Ag	Mola Bahadur	Yes	Ag	AP	12127	
CA	AF/0505/03898/SHA		L	Logar	Muhammad Ag	Ghal Darrah	Yes	Ag	AP	7000	
CA	AF/0505/03837/SHA		L	Logar	Muhammad Ag	Dehmena (Zarghun Shahr)	Yes	Ag	AP	3193250	
CA	AF/0505/03837/SHA		M	Logar	Muhammad Ag	Dehmena (Zarghun Shahr)	Yes	Ag	AP	305025	
CA	AF/0505/03913/SHA		L	Logar	Muhammad Ag	Dashtak	Yes	Pastur	AP	37500	
CA	AF/0505/03913/SHA		L	Logar	Muhammad Ag	Dashtak	Yes	Pastur	AP	180000	
CA	AF/0505/03913/SHA		M	Logar	Muhammad Ag	Dashtak	Yes	Pastur	AP	213282	
CA	AF/0505/03913/SHA		L	Logar	Muhammad Ag	Dashtak	Yes	Pastur	AP	473838	
CA	AF/0505/03910/SHA		M	Logar	Muhammad Ag	Safedsang	Yes	Pastur	AP	42030	
CA	AF/0505/03910/SHA		L	Logar	Muhammad Ag	Safedsang	Yes	Pastur	AP	9187.5	
CA	AF/0504/03713/SHA		L	Logar	Muhammad Ag	Nazar Kala (Abbazak)	Yes	Pastur	AP	60000	
CA	AF/0504/03713/SHA		H	Logar	Muhammad Ag	Nazar Kala (Abbazak)	Yes	Ag	AP	764400	
CA	AF/0504/03713/SHA		L	Logar	Muhammad Ag	Nazar Kala (Abbazak)	Yes	Ag	AP	30000	
CA	AF/2801/28644/SHA		M	Bamyan	Bamyan Cente	Khwaja Roshni	Yes	Ag	AP	105,000	
CA	AF/2801/28662/SHA		H	Bamyan	Bamyan Cente	Pay Kotal	Yes	Ag	AP	87,750	
CA	AF/2801/28745/SHA		L	Bamyan	Bamyan Cente	Sowghdar	Yes	Pastur	AP	27,725	
CA	AF/2801/28745/SHA		L	Bamyan	Bamyan Cente	Sowghdar	Yes	Pastur	AP	28,900	
CA	AF/2801/28745/SHA		L	Bamyan	Bamyan Cente	Sowghdar	Yes	Pastur	AP	85,900	
CA	AF/2801/28745/SHA		H	Bamyan	Bamyan Cente	Sowghdar	Yes	Pastur	AP	118,447	
CA	AF/2801/28745/SHA		L	Bamyan	Bamyan Cente	Sowghdar	Yes	Pastur	AP	45,000	
CA	AF/2801/28747/SHA		M	Bamyan	Bamyan Cente	Gorwana	Yes	Pastur	AP	250,000	
CA	AF/2801/28747/SHA		M	Bamyan	Bamyan Cente	Qafeleh Bashi	Yes	Pastur	AP	446,500	
CA	AF/2801/28727/SHA		M	Bamyan	Bamyan Cente	Sayyedabad	Yes	Pastur	AP	76,137	
CA	AF/2801/28727/SHA		L	Bamyan	Bamyan Cente	Sayyedabad	Yes	Pastur	AP	79,050	
CA	AF/2801/28738/SHA		M	Bamyan	Bamyan Cente	Sheryab	Yes	Pastur	AP	13,900	
CA	AF/2801/28735/SHA		M	Bamyan	Bamyan Cente	Tajek	Yes	Pastur	AP	117,051	

AMAC North
Operational Teamwise Plan 1386 (2007/08)

Region	Task Name	Cluster No.	Impact	Province	District	Village	Confirmed	Land Type	Mine Type	Area Size (Sqm)	Remarks
North	Summer Location DT 18 (20 Lanes)										
	AF/3102/15441/012 HQ 442 SHA-4	87	Low	Sar-e-Pul	Sangcharak	AWQAF	yes	Agri	AP	36799	
	AF/3102/15441/013 HQ 442 SHA-4	87	Low	Sar-e-Pul	Sangcharak	AWQAF	yes	Agri	AP	13749	
	AF/3102/15441/015 HQ 442 SHA-1	88	Low	Sar-e-Pul	Sangcharak	Khwaja Nehan	yes	Agri	AP	70794	
	AF/3102/15441/016 HQ 442 SHA-1	88	Low	Sar-e-Pul	Sangcharak	Khwaja Nehan	yes	Agri	AP	40000	
	AF/3102/15441/017 HQ 442 SHA-1	88	Low	Sar-e-Pul	Sangcharak	Khwaja Nehan	yes	Agri	AP	40000	
	AF/3102/15441/018 HQ 442 SHA-1	88	Low	Sar-e-Pul	Sangcharak	Khwaja Nehan	yes	Agri	AP	28000	
TOTAL										229342	
North	Winter Location ATC DT 18 (20 Lanes)										
	AF/1614/14562/008 HQ 1406 SHA 2	26	Low	Balkh	Khulam	Khwaja Burhan(Tapa Mula Shab Morad)	yes	GZR	AP	20000	
	AF/1614/14562/009 HQ 1406 SHA 3	26	Low	Balkh	Khulam	Khwaja Burhan(Tapa Seya Pai)	yes	GZR	AP	15000	
	AF/1614/14548/010 HQ 1409 SHA 1	26	Low	Balkh	Khulam	Dawlat Koh	yes	GZR	AP	40000	
TOTAL										75000	
North	Summer Location DT 15 (20 Lanes) Support with MDS										
	AF/1506/14144/001 HQ 1017 SHA-3	59	Low	Samangan	poram Wa Sarba	Langar	Yes	Grzing	AP	40000	
	AF/1506/14144/001 HQ 1017 SHA-3	59	Low	Samangan	poram Wa Sarba	Langar	Yes	Grzing	AP	20000	
	AF/1506/14144/004 HQ 1017 SHA-3	59	Low	Samangan	poram Wa Sarba	Langar	Yes	Grzing	AP	40000	
	AF/1506/14144/005 HQ 1017 SHA-3	59	Low	Samangan	poram Wa Sarba	Langar	Yes	Grzing	AP	12306	
	AF/1506/14144/006 HQ 1017 SHA-3	59	Low	Samangan	poram Wa Sarba	Langar	Yes	Grzing	AP	40000	
	AF/1506/14144/007 HQ 1017 SHA-3	59	Low	Samangan	poram Wa Sarba	Langar	Yes	Grzing	AP	30000	
	AF/1506/14144/087 HQ 1017 SHA-3	59	Low	Samangan	poram Wa Sarba	Langar	Yes	Grzing	AP	7500	
	AF/1506/14144/009 HQ 1017 SHA-3	59	Low	Samangan	poram Wa Sarba	Langar	Yes	Grzing	AP	40000	
AF/1506/14144/010 HQ 1017 SHA-3	59	Low	Samangan	poram Wa Sarba	Langar	Yes	Grzing	AP	13000		
TOTAL										242806	
North	Winter Location ATC DT 15 (20 Lanes) Support with MDS										
	AF/1602/00000/016 HQ 375 SHA 1	26	Medium	Balkh	Nahri Shahi	Dashti Hayratan	Yes	Grzing	AP	30334	
	AF/1614/32219/007 HQ 1411 SHA	26	Medium	Balkh	Khohm	Chetgari(Kohi Sorkhi)	Yes	Grzing	AP	52951	
	AF/1614/32219/011 HQ 1411 SHA 4	26	Low	Balkh	Khulam	Chegari (Tapa Chaindar)	Yes	GZR	AP	30000	
	AF/1614/14546/013 HQ 1413 SHA 1	26	Low	Balkh	Khulam	ngi Aegh (Qarawol Tapa	Yes	GZR	AP	40000	
TOTAL										153285	
North	Summer Location ATC DT 04(20 Lanes) with out MDS support										
	AF/1808/16539/ 005 HQ 1618 SHA 1	79	Medium	Faryab	Sherin Tagab	Kohi Sayad(Tapa Azim By	Yes	Agri	AP	31500	
	AF/1808/32182/001 HQ 1619 SHA 1	79	High	Faryab	Shirin Tagab	Islam Qala	yes	Resi	AP/UXO	6047	
	AF/1808/16539/004 HQ 1618 SHA 3	79	Medium	Faryab	Shirin Tagab	Fayzabad	yes	Resi	AP/UXO	5910	
	18/1811/096/MF 010 HQ 149 SHA 2	0	Low	Faryab	Qaysar	Do Abai	Yes	Agri	AP	88313	
	18/1811/096/MF 013 HQ 149 SHA 2	0	Low	Faryab	Qaysar	Do Abai	Yes	Agri	AP	56050	
	AF/3106/15675/001 HQ 1723 SHA 3,4	91	Low	Sar-I-Pul	Sayad	Dara Band	yes	Resi	AP	6000	
TOTAL										193820	

Region	Task Name	Cluster No.	Impact	Province	District	Village	Confirmed	Land Type	Mine Type	Area Size (Sqm)	Remarks	
North	Winter Location ATC DT 04(20 Lanes) with out MDS support											
	AF/3106/15829/007 HQ 1722 SHA 3	10	Low	Sar-I-Pul	Sayad	Sayad	yes	Agri	AP	25000		
	AF/3101/15736/002 HQ 331 SHA 1	10	Low	Sar-I-Pul	Sari Pul	Ojh Tapa	yes	Residential	AP	6505		
	AF/3106/15829/008 HQ 1722 SHA 4	10	Low	Sar-I-Pul	Sayad	Sayad	yes	Agri	AP	40000		
TOTAL										71505		
North	Summer Location MDC DT 12 (10 Lanes)											
	AF/1609/14980/001 NA..... SHA 1		Low	Balkh	Sholgar	Aghir Say	Yes	Pasture	AT	23512		
	AF/1609/14964/0001HQ 1254 SHA 1	13	Low	Balkh	Sholgar	Torpaghli	Yes	Agri/Pasture	AT	2500		
	AF/1609/14964/0002HQ 1254 SHA 2	13	Low	Balkh	Sholgar	Torpaghli	Yes	Agri/Pasture	AT	4000		
	AF/1609/14982/0003 HQ 424 SHA 1	13	Low	Balkh	Sholgar	Tajik	Yes	Agri/Pasture	AP	23688		
	AF/3105/15510/001 HQ 333 SHA 1	92	Low	Sar-I-Pul	Suzma Qala	Sazi Kalan	yes	Road	AT	33000		
	AF/3102/15480/003	92	Low	Sar-I-Pul	Sangcharak	Quroqi Qazi	Yes	Road	AT	3266.5		
	Total										59778.5	
	Winter Location MDC DT 12 (10 Lanes) support with MDS											
	AF/1810/16157/002 HQ 362 SHA-1	84	Medium	Faryab	Qaram Qul	Qibchaq	yes	GRZ	AT	40000		
	AF/1810/16157/003 HQ 362 SHA-1	84	Medium	Faryab	Qaram Qul	Qibchaq	yes	GRZ	AT	40000		
	Total										80000	
Winter Location MDS Support DT 12												
AF/1810/16157/002 HQ 362 SHA-1	84	Medium	Faryab	Qaram Qul	Qibchaq	yes	GRZ	AT	90000			
AF/1810/16157/003 HQ 362 SHA-1	84	Medium	Faryab	Qaram Qul	Qibchaq	yes	GRZ	AT	40000			
TOTAL										130000		
North	Summer & Winter Location MDG 05											
	AF/1811/16137/012 HQ 1598 SHA 2	85	Medium	Faryab	Khani Char Bagh	Chakman Pain	yes	GRZ	AT	150000		
	AF/1811/16137/014 HQ 1598 SHA 2	85	Medium	Faryab	Khani Char Bagh	Chakman Pain	yes	GRZ	AT	150000		
	AF/1811/16137/016 HQ 1598 SHA 2	85	Medium	Faryab	Khani Char Bagh	Chakman Pain	yes	GRZ	AT	150000		
	AF/1811/16137/015 HQ 1598 SHA 2	85	Medium	Faryab	Khani Char Bagh	Chakman Pain	yes	GRZ	AT	150000		
	AF/1811/16137/017 HQ 1598 SHA 2	85	Medium	Faryab	Khani Char Bagh	Chakman Pain	yes	GRZ	AT	150000		
TOTAL										750000		
North	Summer & Winter Location MCD DT 07											
	AF/1811/16137/013 HQ 1598 SHA 2	85	Medium	Faryab	Khani Char Bagh	Chakman Pain	yes	GRZ	AT	40000		
	AF/1811/16137/011 HQ 1598 SHA 2	85	Medium	Faryab	Khani Char Bagh	Chakman Pain	yes	GRZ	AT	40000		
	AF/1811/16137/018 HQ 1598 SHA 2	85	Medium	Faryab	Khani Char Bagh	Chakman Pain	yes	GRZ	AT	40000		
	AF/1810/16157/001 HQ 362 SHA-1	85	Medium	Faryab	Qaram Qul	Qibchaq	yes	GRZ	AT	40000		
	Total										160000	
	Summer & Winter Location MDS Support DT 07											
	AF/1811/16137/013 HQ 1598 SHA 2	85	Medium	Faryab	Khani Char Bagh	Chakman Pain	yes	GRZ	AT	90000		
	AF/1811/16137/011 HQ 1598 SHA 2	85	Medium	Faryab	Khani Char Bagh	Chakman Pain	yes	GRZ	AT	90000		
	AF/1811/16137/018 HQ 1598 SHA 2	85	Medium	Faryab	Khani Char Bagh	Chakman Pain	yes	GRZ	AT	90000		
AF/1810/16157/001 HQ 362 SHA-1	85	Medium	Faryab	Qaram Qul	Qibchaq	yes	GRZ	AT	90000			
TOTAL										680000		

Region	Task Name	Cluster No.	Impact	Province	District	Village	Confirmed	Land Type	Mine Type	Area Size (Sqm)	Remarks	
North	Summer Location MDC DT 13											
	AF/1505/14647/001 HQ 1059 SHA 1	52	Low	Samangan	Roy Doab	Sur Qala	Yes	Agri	AP	40000		
	AF/1505/14647/002 HQ 1059 SHA 2	52	Low	Samangan	Roy Doab	Sur Qala	Yes	Agri	AP	40000		
	AF/1505/14647/003 HQ 1059 SHA 2	52	Low	Samangan	Roy Doab	Sur Qala	Yes	Agri	AP	40000		
	Total									120000		
North	Summer Location MDS Support DT 13											
	AF/1505/14647/001 HQ 1059 SHA 1	52	Low	Samangan	Roy Doab	Sur Qala	Yes	Agri	AP	90000		
	AF/1505/14647/002 HQ 1059 SHA 2	52	Low	Samangan	Roy Doab	Sur Qala	Yes	Agri	AP	90000		
	AF/1505/14647/003 HQ 1059 SHA 2	52	Low	Samangan	Roy Doab	Sur Qala	Yes	Agri	AP	80000		
		Total									260000	
	Winter Location MDC DT 13											
	AF/1501/14164/020 HQ 1170 SHA 1	28	Low	Samangan	Aybak	QuchNehal	Yes	Road	AT	40000		
	AF/1501/14164/021 HQ 1170 SHA 3	28	Low	Samangan	Aybak	QuchNehal	Yes	Road	AT	40000		
		Total									80000	
	Winter Location MDS Support DT 13											
AF/1501/14164/020 HQ 1170 SHA 1	28	Meduim	Samangan	Aybak	QuchNehal	Yes	Road	AT	60000			
AF/1501/14164/021 HQ 1170 SHA 3	0	Meduim	Samangan	Aybak	QuchNehal	Yes	Road	AT	90000			
AF/1501/14164/022 HQ 1170 SHA 5	28	Meduim	Samangan	Aybak	QuchNehal	Yes	Road	AT	65000			
	Total									215000		
North	Summer Location MDC DT 08											
	AF/1504/14522/012 HQ 1104 SHA 1	32	Low	Samangan	Dar-I-Suf	Chochman Qutan	yes	oad/Pastu	AT	40000		
	AF/1504/14528/013 HQ 1120 SHA 3	36	Low	Samangan	Dar-I-Suf	Nawzan (2)	yes	Grazing	AP	16000		
	AF/1504/14528/014 HQ 1120 SHA 2	36	Low	Samangan	Dar-I-Suf	Nawzan (2)	yes	Agri	AP	2500		
	AF/1504/14416/015 HQ 1106 SHA 1	35	Low	Samangan	Dar-I-Suf	Balghaly(1)	yes	Agri	AP	40000		
	AF/1504/14416/016 HQ 1106 SHA 1	35	Low	Samangan	Dar-I-Suf	Balghaly(1)	yes	Agri	AP	40000		
		Total									82500	
	Summer Location MDS Support DT 08											
	AF/1504/14522/012 HQ 1104 SHA 1	32	Low	Samangan	Dar-I-Suf	Chochman Qutan	yes	oad/Pastu	AT	90000		
	AF/1504/14528/013 HQ 1120 SHA 3	36	Low	Samangan	Dar-I-Suf	Nawzan (2)	yes	Grazing	AP	25000		
	AF/1504/14528/014 HQ 1120 SHA 2	36	Low	Samangan	Dar-I-Suf	Nawzan (2)	yes	Agri	AP	12000		
	AF/1504/14416/015 HQ 1106 SHA 1	35	Low	Samangan	Dar-I-Suf	Balghaly(1)	yes	Agri	AP	90000		
		Total									217000	
	Winter Location MDC DT 08											
	AF/1502/14614/004 HQ 949 SHA 1	26	Low	Samangan	Hazart Sultan	Khawja Perishan	yes	Pasture	AP	30000		
AF/1502/14595/005 HQ 950 SHA 1	51	Low	Samangan	Hazart Sultan	Asayab Abad	yes	Pasture	AP	40000			
AF/1502/14595/006 HQ 950 SHA 2	51	Low	Samangan	Hazart Sultan	Asayab Abad	yes	Pasture	AP	120000			
AF/1502/32201/007 HQ 948 SHA 1	51	Low	Samangan	Hazart Sultan	Zer Lopan	yes	Pasture	AP	200000			
AF/1502/21406/008 HQ 963 SHA 1	51	Low	Samangan	Hazart Sultan	Delkhaki	yes	Pasture	AP	90000			
	Total									480000		
	TOTAL									2909000		

Region	Task Name	Cluster No.	Impact	Province	District	Village	Confirmed	Land Type	Mine Type	Area Size (Sqm)	Remarks
North	Summar Location MDG 04										
	AF/1610/15181/002	31		Balkh	Kishindah	Sukhta	yes	Agri	AP/AT	32057	
	AF/1611/14863/001/ HQ 1403 SHA1	31	Meduim	Balkh	Charkint	Dasqodoq (Tapa Galah Nil)	yes	Road/Pasture	AT/AP	150000	
	AF/1615/00000/001 HQ 1396 SHA 1		Low	Balkh	Marmul	Bazarak	yes	Road	AT	33000	
	AF/1602/14809/024 NA 11 SHA 1	2	Med	Balkh	Nihr-e-Shahi	Guri Mar	yes	GRZ	AT	151080	
	AF/1602/00000/027 HQ 373 SHA 8	3	Med	Balkh	Nihr-e-Shahi	Durahi Hayratan	yes	GRZ	AT	108734	
TOTAL										474871	
North	Winter Location MDG 04										
	AF/1602/00000/030 HQ 373 SHA 8	3	Med	Balkh	Nihr-e-Shahi	Durahi Hayratan	yes	GRZ	AT	138750	
	AF/1602/00000/031 HQ 373 SHA 8	3	Med	Balkh	Nihr-e-Shahi	Durahi Hayratan	yes	GRZ	AT	150000	
TOTAL										288750	
North	ATC MDU 01										
	1607/15290/001 HQ-364 SHA-1	7	Low(Rqueste	Balkh	Char Bolak	Qizil Qala	yes	Irrigation	AP	59410	
TOTAL										59410	
North	ATC EOD 11										
	AF/3101/31795/BF001		Low	Sari Pul	Sari Pul	Jangal Bagh	yes	Res	UXO	0	
	EOD clearance village by village			Sari Pul	Defferent district	different villages	yes	yes	Mine/Uxo	0	
	MDC EOD										
	EOD clearance village by village			Fayab	Maymana	different villages	yes		Mine/UXO		
	EOD clearance village by village			Fayab	Pashton Koat	different villages	yes		Mine/UXO		
	EOD clearance village by village			Jawzjan	Sheberghan	different villages	yes		Mine/UXO		
	DDG EOD 03										
	EOD clearance village by village			Balkh	Khishendeh	different villages	yes		Mine/Uxo		
	EOD clearance village by village			Balkh	Dawlat Abad	different villages	yes		Mine/Uxo		
	DDG EOD 16										
	EOD clearance village by village			Balkh	Khishendeh	different villages	yes		Mine/Uxo		
	EOD clearance village by village			Balkh	Dawlat Abad	different villages	yes		Mine/Uxo		
	WRA EOD 1										
EOD clearance village by village			Samangan	Aybak	different villages	yes		Mine/Uxo			
EOD clearance village by village			Samangan	Hazart Sultan	different villages	yes		Mine/Uxo			
North	MCPA LIAT No.09										
	Task Wise Assessment		High/Med	Balkh	Different district	SHA (ICRC)					
	Task Wise Assessment		High/med	Samangan	Different district	Local requests ,ICRC mine victium reports and any other					
	Task Wise Assessment		high/med/Low	Balkh	Different district	SHA (ICRC)					
	Task Wise Assessment		high/med/Low	Samangan	Different district	Local requests ,ICRC mine victium reports and any other					
	Task Wise Assessment		high/med/Low	Samangan	Different district	Local requests ,ICRC mine victium reports and any other					
	MCPA LIAT No.08										
	Task Wise Assessment		High/Med	Sar-e-pul	Different district	SHA (ICRC)					
Task Wise Assessment		High/Med	Jawzjan	Different district	SHA (ICRC)						

Region	Task Name	Cluster No.	Impact	Province	District	Village	Confirmed	Land Type	Mine Type	Area Size (Sqm)	Remarks
North	Task Wise Assessment		High/Med	Faryab	Different district	Local requests ,ICRC mine victim reports and any other					
	Task Wise Assessment		high/med/Lo	Balkh	Different district	SHA (ICRC)					
	Task Wise Assessment		high/med/Lo	Samangan	Different district	Local requests ,ICRC mine victim reports and any other					
	Task Wise Assessment		high/med/Lo	Sar-e-pul	Different district	Local requests ,ICRC mine victim reports and any other					
	Task Wise Assessment		high/med/Lo	Faryab	Different district	Local requests ,ICRC mine victim reports and any other					
	Task Wise Assessment		high/med/Lo	Jawzjan	Different district	SHA (ICRC)					
	Task Wise Assessment		high/med/Lo	Samangan	Different district	Local requests ,ICRC mine victim reports and any other					
	Task Wise Assessment		high/med/Lo	Samangan	Different district	SHA (ICRC)					

AMAC East
Operational Teamwise Plan 1386 (2007/08)

Region	Task Name	Cluster No.	Impact	Province	District	Village	Confirmed	Land Type	Mine Type	Area Size (Sqm)	Remarks
Eastern	AF-0802/09339/238	C-02	Medium	Nangarhar	Surkh Rud	Shekh Misri	yes	Garazing	AT	16750	
Eastern	AF-0802/09339/239	C-02	Medium	Nangarhar	Surkh Rud	Shekh Misri	yes	Garazing	AT	25150	
Eastern	AF-0802/09339/240	C-02	Medium	Nangarhar	Surkh Rud	Shekh Misri	yes	Garazing	AT	97955	
Eastern	AF-0809/09388/0082	C-03	Medium	Nangarhar	Rodat	Surkh Dewal	yes	Garazing	AP	45863	
Eastern	AF-0808/09101/008	C-01	Medium	Nangarhar	Dehballa	Ahmad khilo	yes	Garazing	AP	40880	
Eastern	AF-0802/09333/0236	C-01	Medium	Nangarhar	Surkh Rud	Fatihabad	yes	Agri	AT	104314	
Eastern	AF-0809/08971/076	C-04	Low	Nangarhar	Rodat	Qatraghi	yes	Garazing	AP	53878	
Eastern	AF-0814/09038/0023	C-02	Medium	Nangarhar	Mohmand dara	Daka	yes	Grazaing	UXO	382393	
Eastern	AF-0801/09518/0023	C-01	Medium	Nangarhar	Jalabad	Tangi Takchi	yes	Garazing	AP	49000	
Eastern	AF-0801/09518/0024	C-01	Medium	Nangarhar	Jalabad	Tangi Takchi	yes	Garazing	AP	40025	
Eastern	AF-0902/09901/129	C-06	high	Laghman	Qarghayi	Farman khail	yes	Garazing	AP	21187	
Eastern	AF-0902/09901/127	C-06	High	Laghman	Qarghaee	Farmankhail	yes	Garazing	AT	120380	
Eastern	AF-0902/09901/128	C-06	High	Laghman	Qarghaee	Farmankhail	yes	Garazing	AT	45920	
Eastern	AF-0801/09518/0026	C-01	Medium	Nangarhar	Jalabad	Tangi Takchi	yes	Garazing	AP	45000	
Eastern	AF-0809/09388/0084	C-03	Medium	Nangarhar	Rodat	Sar dewal	yes	Garazing	AP	37000	
Eastern	AF-0809/09388/0087	C-03	Medium	Nangarhar	Rodat	Sar dewal	yes	SHA#01	AP	40000	
Eastern	AF-0809/09388/0088	C-03	Medium	Nangarhar	Rodat	Sar dewal	yes	SHA#01	AP	35000	
Eastern	AF-0805/09655/0050	C-01	Medium	Nangarhar	Khogyani	Arghach	yes	Agri	AT	131532	
Eastern	AF-0805/09655/0051	C-01	Medium	Nangarhar	Khogyani	Arghach	yes	Agri	AT	146253	
Eastern	AF-0806/09001/0059	C-02	Medium	Nangarhar	Chaparhar	Baloch Korani	yes	Road	AT	138120	
Eastern	AF-0806/09001/0060	C-02	Medium	Nangarhar	Chaparhar	Baloch Korani	yes	Road	AT	84319	
Eastern	AF-0806/09001/0061	C-02	Medium	Nangarhar	Chaparhar	Baloch Korani	yes	Grazing	AT	141036	
Eastern	EOD Clearance Village-by-Village	C-01,02	Medium	Nangarhar	Surkh Rud	Different Villages	yes	Resi	UXO	N/A	
Eastern	EOD Clearance Village-by-Village	C-01,02,03,04	Medium	Nangarhar	Rodat	Different Villages	yes	Resi	UXO	N/A	
Eastern	EOD Clearance Village-by-Village	C-01,02	Medium	Nangarhar	Mohmand Dara	Different Villages	yes	Resi	UXO	N/A	
Eastern	EOD Clearance Village-by-Village	C-01,02	Medium	Nangarhar	Behsod	Different Villages	yes	Resi	UXO	N/A	
Eastern	EOD Clearance Village-by-Village	C-01,02	Medium	Nangarhar	Dari noor	Different Villages	yes	Resi	UXO	N/A	
Eastern	EOD Clearance Village-by-Village	C-01	Low	Nangarhar	Khewa	Different Villages	yes	Resi	UXO	N/A	
Eastern	AF-0808/09101/008	C-01	Medium	Nangarhar	Dehballa	Ahmad khilo	yes	Garazing	AP	40880	
	Cumunity # 01(SHA#01)	C-01	Medium	Nangarhar	Dehballa	Ahmad khilo	yes	Garazing	AP	202500	
Eastern	AF-0803/09479/027	C-02	High	Nangarhar	Hesarak	Jabay	yes	Garazing	AP	18273	
	Cumunity # 721(SHA #01)	C-03	Medium	Nangarhar	Hesarak	Yaghiband	yes	Garazing	AP	709400	
Eastern	Cumunity # 720(SHA # 02)	C-02	Medium	Nangarhar	Hesarak	Lajgar	yes	Garazing	AP/AT	85000	
Eastern	SHA # 01	C-02	Medium	Nangarhar	Dari noor	Barkot	yes	Garazing	AP	229600	

AMAC Northeast
Operational Task Wise Plan 1386 (2007/08)

Region	Task Name	Impact	Province	District	Village	Confirmed	Land Type	Mine Type	Area Size (Sqm)	Remarks
NE	Summar Location ATC DT- 20 +MDS									
NE	AF/1309/13477/014 HQ-1484 SHA-1	High	Baghlan	Nahrin	Doabi	Yes	Cropland/Pasture	AP	52383	
NE	AF/1309/13477/013 HQ-1484 SHA-1	High	Baghlan	Nahrin	Doabi	Yes	Cropland/Pasture	AP	42909	
NE	AF/1305/13355/0004 HQ-1431 SHA-2	Medium	Baghlan	Tala Wa Barfak	Dashte Lajam	Yes	Cropland/Pasture	AP	4000	
NE	AF/1305/13355/0005 HQ-1431 SHA-3	Medium	Baghlan	Tala Wa Barfak	Dashte Lajam	Yes	Cropland/Infrast./Pasture	AP	60000	
NE	Winter Location ATC DT- 20									
NE	AF/1301/12978/0001 HQ-987 SHA-1	High	Baghlan	Baghlan	Wali Khel	Yes	Pasture	AP	60000	
NE	AF/1301/12978/0002 HQ-987 SHA-1	High	Baghlan	Baghlan	Wali Khel	Yes	Pasture	AP	60000	
NE	Summar Location ATC DT- 02 +MDS									
NE	AF/1204/12642/0001 HQ-1576 SHA-1	Medium	Takhar	Chal	Badam Darrah	Yes	Cropland	AP	40000	
NE	AF/1204/12642/0002 HQ-1576 SHA-1	Medium	Takhar	Chal	Badam Darrah	Yes	Cropland	AP	40000	
NE	AF/1204/12642/0003 HQ-1576 SHA-1	Medium	Takhar	Chal	Badam Darrah	Yes	Cropland	AP	40000	
NE	Winter Location ATC DT-02									
NE	AF/1405/00000/0011 HQ-1611 SHA-2	Medium	Kunduz	Ali Abad	Dara-i-Zangi	Yes	Residential	AP	45000	
NE	AF/1405/00000/0012 HQ-1611 SHA-2	Medium	Kunduz	Ali Abad	Dara-i-Zangi	Yes	Agriculture	AP	40000	
NE	AF/1405/00000/0013 HQ-1611 SHA-2	Medium	Kunduz	Ali Abad	Dara-i-Zangi	Yes	Agriculture	AP	40000	
NE	Summar Location ATC DT-05									
NE	AF/1204/00000/0005 HQ-1574 SHA-1	High	Takhar	Chal	Sangoj	Yes	Agriculture	AP	9600	
NE	AF/1204/00000/0006 HQ-1574 SHA-2	High	Takhar	Chal	Sangoj	Yes	Agriculture	AP	20000	
NE	AF/1204/12685/0007 HQ-1579 SHA-1	High	Takhar	Chal	Kohna Qeshlaq	Yes	Agriculture	AP	40000	
NE	AF/1204/12685/0008 HQ-1579 SHA-1	High	Takhar	Chal	Kohna Qeshlaq	Yes	Agriculture	AP	40000	
NE	AF/1204/12829/0009 HQ-1577 SHA-2	High	Takhar	Chal	Namak Ab	Yes	Agriculture	AP	40000	
NE	Winter Location ATC DT-05									
NE	AF/1406/13972/0020 HQ-707 SHA-1	High	Kunduz	Khan Abad	Sanduuq Say Kalan	Yes	Agriculture	AP	14560	
NE	AF/1406/13972/0021 HQ-707 SHA-2	High	Kunduz	Khan Abad	Sanduuq Say Kalan	Yes	Agriculture	AP	17472	
NE	AF/1406/13972/0022 HQ-707 SHA-3	High	Kunduz	Khan Abad	Sanduuq Say Kalan	Yes	Agriculture	AP	47250	
NE	AF/1406/13972/0023 HQ-707 SHA-4	High	Kunduz	Khan Abad	Sanduuq Say Kalan	Yes	Agriculture	AP	10118	
NE	AF/1406/00000/0024 HQ-684 SHA-1	Medium	Kunduz	Khan Abad	Shor Dara	Yes	Agriculture	AP	10000	
NE	Summar Location ATC DT-01									
NE	AF/1208/12494/0009 HQ-1455 SHA-1	High	Takhar	Rustaq	Dasht-i-Chenar(1)	Yes	Pasture/Cropland	AP	68368	
NE	AF/1208/12494/0010 HQ-1455 SHA-1	High	Takhar	Rustaq	Dasht-i-Chenar(1)	Yes	Pasture/Cropland	AP	35179	
NE	AF/1207/00000/0010 HQ-226 SHA-2	Low (requ	Takhar	Kalafgan	Shakhan Dara-i-Pai	Yes	Agriland	AP	83072	
NE	Winter Location ATC DT-01									
NE	AF/1212/00000/0012 HQ-1588 SHA-1	High	Takhar	Khwaja Ghar	Qarye Qare Abdul G	Yes	Agriland/Pasture	AP	40000	
NE	AF/1212/00000/0013 HQ-1588 SHA-2	High	Takhar	Khwaja Ghar	Qarye Qare Abdul G	Yes	Agriland/Pasture	AP	40000	
NE	Summar Location ATC DT-22 +MDS									
NE	AF/1207/12372/005 HQ-234 SHA-3	High	Takhar	Kalafgan	Takatoymast	Yes	Cropland/Pasture	AP	46913	
NE	AF/1207/12372/006 HQ-234 SHA-4	High	Takhar	Kalafgan	Takatoymast	Yes	Cropland/Pasture	AP	37840	
NE	AF/1207/12938/001 HQ-243 SHA-3	Low	Takhar	Kalafgan	Dasht-i-Robah	Yes	Cropland/Pasture	AP	23700	
NE	AF/1207/00000/0009 HQ-226 SHA-1	Low (requ	Takhar	Kalafgan	Shakhan Dara-i-Pai	Yes	Agriland	AP	76032	
NE	Winter Location ATC DT-22									
NE	AF/1301/12978/0003 HQ-987 SHA-1	High	Baghlan	Baghlan	Wali Khel	Yes	Pasture	AP	40000	
NE	AF/1301/12978/0004 HQ-987 SHA-1	High	Baghlan	Baghlan	Wali Khel	Yes	Pasture	AP	40000	
NE	AF/1301/12969/0005 HQ-988 SHA-1	High	Baghlan	Baghlan	Khala Za'i	Yes	Pasture	AP	40000	

Region	Task Name	Impact	Province	District	Village	Confirmed	Land Type	Mine Type	Area Size (Sqm)	Remarks
NE	AF/1207/12938/0007 HQ-243 SHA-4	Medium	Takhar	Kalafgan	Dasht-i-Robah	Yes	Agriland/Road	AT	40000	
NE	AF/1207/12938/0008 HQ-243 SHA-4	Medium	Takhar	Kalafgan	Dasht-i-Robah	Yes	Agriland/Road	AT	29000	
NE	AF/1207/12938/0009 HQ-243 SHA-5	Medium	Takhar	Kalafgan	Dasht-i-Robah	Yes	Agriland/Road	AT	20000	
NE	Winter Location DT-03									
NE	AF/14/1406/14051/0016 HQ-693 SHA-3	Low (requ	Kunduz	Khan Abad	Chugha-i-Ulya(2)	Yes	Agriland	AP/AT	40000	
NE	AF/14/1406/14051/0017 HQ-693 SHA-3	Low (requ	Kunduz	Khan Abad	Chugha-i-Ulya(2)	Yes	Agriland	AP/AT	40000	
NE	Summar Location DT-02									
NE	AF/1406/14051/0010 HQ-693 SHA-5	Low (requ	Kunduz	Khan Abad	Chugha-i-Ulya(2)	Yes	Road/Resid	AT	5700	
NE	AF/1404/14112/0013 HQ-431 SHA-3	Low (requ	Kunduz	Chahar Dara	Nawabad (1)	Yes	Pasture	AP/AT	101931	
NE	AF/1404/14112/0014 HQ-431 SHA-5	Low (requ	Kunduz	Chahar Dara	Nawabad (1)	Yes	Pasture	AT	9114	
NE	AF/1404/14112/0015 HQ-431 SHA-7	Low (requ	Kunduz	Chahar Dara	Nawabad (1)	Yes	Pasture	AT	72000	
NE	Winter Location DT-02 +MDS									
NE	AF/1406/00000/0011 HQ-678 SHA-1	Low (requ	Kunduz	Khan Abad	Jamanchi	Yes	Road	AP/AT	87000	
NE	AF/1406/00000/0012 HQ-713 SHA-5	Low (requ	Kunduz	Khan Abad	Shorak Ab	Yes	Pasture	AP/AT	15600	
NE	AF/1403/14088/0001 HQ-1392 SHA-1	Low	Kunduz	Qala-i-Zal	Aq Tappeh	yes	Pasture	AP/AT	43500	
NE	Summar Location DT-20									
NE	AF/1102/12219/0001 HQ-236 SHA-1	High	Badakhshar	Kishim	Post Khor	Yes	Agriculture	AP	21600	
NE	AF/1102/12219/0001 HQ-236 SHA-1	High	Badakhshar	Kishim	Post Khor	Yes	Agriculture	AP	17162	
NE	AF/1102/12219/0001 HQ-236 SHA-1	High	Badakhshar	Kishim	Post Khor	Yes	Agriculture	AP	45687	
NE	AF/1102/12219/0001 HQ-236 SHA-1	High	Badakhshar	Kishim	Post Khor	Yes	Agriculture	AP	10800	
NE	Winter Location DT-20									
NE	AF/14/1406/14051/0018 HQ-693 SHA-3	Low (requ	Kunduz	Khan Abad	Chugha-i-Ulya(2)	Yes	Agriland	AP/AT	36650	
NE	AF/1402/13881/0012 HQ-407 SHA-5	Medium	Kunduz	Imam Sahib	Zard Kamar	Yes	Road	AP/AT	47925	
NE	Summar Location MDG-08									
NE	AF/14/1406/14051/0013 HQ-693 SHA-3	Low (requ	Kunduz	Khan Abad	Chugha-i-Ulya(2)	Yes	Agriland	AP/AT	150000	
NE	AF/14/1406/14051/0014 HQ-693 SHA-3	Low (requ	Kunduz	Khan Abad	Chugha-i-Ulya(2)	Yes	Agriland	AP/AT	150000	
NE	AF/14/1406/14051/0015 HQ-693 SHA-3	Low (requ	Kunduz	Khan Abad	Chugha-i-Ulya(2)	Yes	Agriland	AP/AT	150000	
NE	Winter Location MDG-08									
NE	AF/1402/13881/0013 HQ-407 SHA-5	Medium	Kunduz	Imam Sahib	Zard Kamar	Yes	Road	AP/AT	40000	
NE	AF/1402/13881/0011 HQ-407 SHA-3	Medium	Kunduz	Imam Sahib	Zard Kamar	Yes	Road	AP/AT	157550	
NE	Summar Location DT-08 +MDS									
NE	AF/1402/13881/0005 HQ-407 SHA-6	Medium	Kunduz	Imam Sahib	Zard Kamar	Yes	Road/Pasture	AT	130000	
NE	Winter Location DT-08									
NE	AF/1402/13881/0006 HQ-407 SHA-6	Medium	Kunduz	Imam Sahib	Zard Kamar	Yes	Road/Pasture	AT	130000	
NE	AF/1407/00000/0016 HQ-526 SHA-2	Low (requ	Kunduz	Archi	Turkman Quduq/Sh	Yes	Agriland	AP/AT	123284	
NE	Summar Location MDG-06									
NE	AF/1212/12577/0010 HQ-1597 SHA-1	Low (requ	Takhar	Khawaja Ghar	Qezel Kucheh	Yes	Road	AT	100000	
NE	AF/1212/12577/0011 HQ-1597 SHA-2	Low (requ	Takhar	Khawaja Ghar	Qezel Kucheh	Yes	Road	AT	40000	
NE	AF/1407/00000/0015 HQ-526 SHA-1	Low (requ	Kunduz	Archi	Turkman Quduq/Sh	Yes	Road	AP/AT	12856	
NE	AF/1407/00000/0019 HQ-1518 SHA-1	Low	Kunduz	Archi	Mulla Abdul Ghani	Yes	Cropland	AT	3192	
NE	AF/1407/00000/0020 HQ-1518 SHA-2	Low	Kunduz	Archi	Mulla Abdul Ghani	Yes	Cropland	AP/AT	18360	
NE	AF/1407/00000/0021 HQ-1518 SHA-3	Low	Kunduz	Archi	Mulla Abdul Ghani	Yes	Cropland	AT	24426	
NE	AF/1407/00000/0022 HQ-1518 SHA-4	Low	Kunduz	Archi	Mulla Abdul Ghani	Yes	Cropland	AP/AT	14950	
NE	Winter Location MDG-06									
NE	AF/1402/13894/0007 HQ-404 SHA-1	Low	Kunduz	Imam Sahib	Butta Kashan	Yes	Pasture	AP/AT	26520	
NE	AF/1402/13889/0008 HQ-405 SHA-1	Low	Kunduz	Imam Sahib	Majar	Yes	Road	AP/AT	30000	
NE	AF/1402/13889/0009 HQ-405 SHA-2	Low	Kunduz	Imam Sahib	Majar	Yes	Road	AP/AT	7287	
NE	AF/1402/13890/0010 HQ-406 SHA-2	Low	Kunduz	Imam Sahib	Besh Kappa	Yes	Road	AP/AT	19800	

Region	Task Name	Impact	Province	District	Village	Confirmed	Land Type	Mine Type	Area Size (Sqm)	Remarks
NE	AF/1404/14083/0016 HQ-1789 SHA-1	Low	Kunduz	Chahar Dara	Khoыр Abad	Yes	Road/Pasture	AT	63000	
NE	AF/1402/13903/0014 HQ-421 SHA-2	Low	Kunduz	Imam Sahib	Khanaqah	Yes	Road	AP/AT	91375	
NE	Summar Location MDG-07									
NE	AF/1305/13346/0001 HQ-1423 SHA-1	Medium	Baghlan	Tala Wa Barfak	Kawshandaz	Yes	Cropland/Road	AT	12000	
NE	AF/1305/00000/0002 HQ-1430 SHA-1	Low	Baghlan	Tala Wa Barfak	Not in AIMS (Gerdai)	Yes	Road	AT	35000	
NE	AF/1305/13355/0003 HQ-1431 SHA-1	Medium	Baghlan	Tala Wa Barfak	Dashte Lajam	Yes	Road	AT	6250	
NE	AF/1302/13149/0005 HQ-1476 SHA-2	High	Baghlan	Puli Khumri	Bala Duri (1)	Yes	Cropland	AP/AT	58648	
NE	AF/1302/13071/0006 HQ-1479 SHA-1	Low	Baghlan	Puli Khumri	Tajek-ha-i-Kole Amd	Yes	Cropland	AT	30000	
NE	AF/1302/13071/0007 HQ-1479 SHA-2	Low	Baghlan	Puli Khumri	Tajek-ha-i-Kole Amd	Yes	Cropland	AT	1250	
NE	AF/1302/13115/0008 HQ-1477 SHA-1	Low	Baghlan	Puli Khumri	Jonaw	Yes	Resid/Pasture	AP/AT	76500	
NE	AF/1302/13115/0009 HQ-1477 SHA-2	Low	Baghlan	Puli Khumri	Jonaw	Yes	Pasture	AP/AT	116550	
NE	AF/1304/13285/0005 HQ-1145 SHA-1	Low	Baghlan	Dushi	Baghe Molashah	Yes	Pasture	AP/AT	30000	
NE	Winter Location MDG-07									
NE	AF/1304/13285/0006 HQ-1145 SHA-3	Low	Baghlan	Dushi	Baghe Molashah	Yes	Pasture	AP/AT	115700	
NE	AF/1311/28916/0001 HQ-1445 SHA-1	Low	Baghlan	Kahmard	Qatarsum	Yes	Road/Agri/Pasture	AP/AT	77400	
NE	AF/1301/12984/0001 HQ-1006 SHA-1 Sped	Low	Baghlan	Baghlan	Qaysar Khel	Yes	Pasture	AT	900	
NE	AF/1301/00000/0002 HQ-947 SHA-1 Sped	Low	Baghlan	Baghlan	Not in AIMS (sarak-	Yes	Road	AT	1000	
NE	ATC MDU-02									
NE	AF/1407/14078/0023 HQ-514 SHA-1	Low	Kunduz	Archi	Men Chugur Sufla	Yes	Irrigation	AP/UXC	15000	
NE	AF/1302/32174/0001 HQ-1475 SHA-1 Sped	Low	Baghlan	Puli Khumri	Khwaja Alwan	Yes	Irrigation	AP	400	
NE	AF/1301/00000/0002 HQ-986 SHA-1 Sped	Medium	Baghlan	Baghlan	Not in AIMS (Kakar)	Yes	Irrigation	AP	800	
NE	AF/1302/00000/0003 NE-12 SHA-1 Sped	Low	Baghlan	Puli Khumri	Not in AIMS (Surkh	Yes	Irrigation	AP	100	
NE	AF/1303/00000/0001 HQ-1011 SHA-1 ST	Low	Baghlan	Dahana-i-Ghori	Not in AIMS (Ghular	Yes	House	AP	2000	
NE	AF/1203/12632/0003 HQ-1453 SHA-2	High	Takhar	Ishkamish	Samandaw (1)	Yes	House	AP	10000	
NE	AF/1310/31887/0001 HQ-1159 SHA-1 ST	Low	Baghlan	Burka	Burka	Yes	House	AP	1500	
NE	AF/1307/13608/0001 HQ-1854 SHA-2	Medium	Baghlan	Andarab	Arzangane Ulya	No	House	AP	6600	
NE	ATC EOD-05 Village-by-Village									
NE	EOD Clearance Village-by-Village		Kunduz	Khan Abad	Different Villages			UXO	N/A	
NE	WRA EOD-05 Village-by-Village									
NE	EOD Clearance Village-by-Village		Kunduz	Kunduz	Different Villages			UXO	N/A	
NE	DDG EOD-XX Village-by-Village									
NE	EOD Clearance Village-by-Village		Baghlan	Dushi	Different Villages			UXO	N/A	
NE	DDG EOD-XX Village-by-Village									
NE	EOD Clearance Village-by-Village		Baghlan	Baghlan	Different Villages			UXO	N/A	
NE	WRA EOD-07 Village-by-Village									
NE	EOD Clearance Village-by-Village		Kunduz	Ali Abad	Different Villages			UXO	N/A	
NE	MCPA LIAT-7									
NE	Task Wise Assessment	H/M/L	Baghlan	Different Districts	Different Communities					ination , ICRC Mines/ERW, Ammunitions and local reques
NE	Task Wise Assessment		Baghlan	Different Districts	Different Communities					ment of Baghlan Province next 5 Years PDC Prioritized P
NE	Task Wise Assessment	H/M/L	Baghlan	Different Districts	Different Communities					ination , ICRC Mines/ERW, Ammunitions and local reques
NE	Task Wise Assessment	H/M/L	Baghlan	Different Districts	Different Communities					ination , ICRC Mines/ERW, Ammunitions and local reques
NE	MCPA LIAT-13									
NE	Task Wise Assessment	H/M/L	Kunduz	Different Districts	Different Communities					ination , ICRC Mines/ERW, Ammunitions and local reques
NE	Task Wise Assessment	H/M/L	Kunduz	Different Districts	Different Communities					ination , ICRC Mines/ERW, Ammunitions and local reques
NE	Task Wise Assessment	H/M/L	Kunduz	Different Districts	Different Communities					ination , ICRC Mines/ERW, Ammunitions and local reques
NE	Task Wise Assessment		Kunduz	Different Districts	Different Communities					ment of Kunduz Province next 5 Years PDC Prioritized Pi
NE	Task Wise Assessment	H/M/L	Kunduz	Different Districts	Different Communities					ination , ICRC Mines/ERW, Ammunitions and local reques
NE	Task Wise Assessment	H/M/L	Baghlan	Different Districts	Different Communities					ination , ICRC Mines/ERW, Ammunitions and local reques

AMAC Southeast
Operational Task wise Plan 1386 (2007/2008)

Annex M to the IWP 1386

Region	Task Name	Impact	Province	District	Village	Confirmed	Land Type	Mine Type	Area Size (Sqm)	Remarks
SE	ATC DT#3									
SE	07/0719/017/044	High	Paktya	Jaji	Ali Sangi	yes	Grazing	AP	45000	
SE	07/0719/016/075	High	Paktya	Jaji	Bayan Khil	Yes	Grazing	AP	51670	
SE	ATC DT#25									
SE	AF/0719/08130/016	High	Paktya	Lega Mangal	Kharzun	Yes	Grazing	AP	53604	
SE	AF/0719/31857/018 HQ-1831 SHA#1	Low	Paktya	Lega Mangal	Suliman Khil	Yes	Grazing	AP	54425	
SE	ATC DT#16									
SE	AF/0719/08130/015	High	Paktya	Lega Mangal	Kharzun	Yes	Grazing	AP	58530	
SE	AF/0719/08130/017	High	Paktya	Lega Mangal	Kharzun	Yes	Grazing	AP	56928	
SE	ATC DT#19									
SE	07/0719/032/023	High	Paktya	Jaji	Choryan	Yes	Grazing	AP	33080	
SE	07/0719/032/028	High	Paktya	Jaji	Choryan	Yes	Grazing	AP	12394	
SE	07/0719/017/074	High	Paktya	Jaji	Ali Sangi		Agri land	AT	7224	
SE	07/0719/32/24	High	Paktya	Jaji	Choryan		Grazing	AP	23778	
SE	07/0719/016/015	High	Paktya	Jaji	Bayan Khil	Yes	Grazing	AP	36447	
SE	ATC DT#23									
SE	AF/0701/07277/223	High	Paktya	Gardiz	Dara-e-Mullah Qu	Yes	Grazing	AP	66000	
SE	AF/0701/07226/239	High	Paktya	Gardiz	Chakan-e-Shikhar	Yes	Grazing	AP	50187	
SE	ATC DT#21									
SE	AF/0719/013/018	High	Paktya	Jaji	Ali Khil	Yes	Grazing	AP	11551	
SE	07/0719/32/022	High	Paktya	Jaji	Chowni		Grazing	AP	44244	
SE	07/0719/016/009	High	Paktya	Jaji	Bayan Khil	Yes	Agri land	AP	50358	
SE	ATC DT#9									
SE	AF/0722/08407/091	High	Paktya	Said Karam	Ghoriza	Yes	Road	AP+AT	58635	
SE	AF/0722/08450/092	High	Paktya	Said Karam	Karizgai	Yes	Agri	AT	69612	
SE	AF/0722/08425/085	High	Paktya	Said Karam	Khand Khil	Yes	Agri land	AP+AT	96412	
SE	ATC DT#10									
SE	AF/07/0727/024/078	High	Paktya	Said Karam	Osman Khil		Grazing	AP	50000	
SE	07/0727/018/066	High	Paktya	Said Karam	Mamozai	Yes	Agri	AT	116602	
SE	AF/0722/08450/093	High	Paktya	Said Karam	Karizgai	Yes	Agri land	AP+AT	60000	
SE	AF/0727/025/075	High	Paktya	Said Karam	Ghoriza		Agri land	AT	96138	
SE	ATC EOD#9									
SE	AF/0719/000000/EOD and EOD vbv.....	High	Paktya	Jaji	Jaji	Yes	Resedentiol	Bombs	0	
SE	AF/0719/000000/EOD vbv.....	High	Paktya	Jaji	Jaji	Yes	Resedentiol	UXO		
SE	ATC EOD#6									
SE	AF/0701/000000/EOD.vbv.....	High	Paktya	Gardiz	Gardiz	Yes	Resedentiol	UXO	0	
SE	AF/0701/000000/EOD.vbv.....	High	Paktya	Gardiz	Gardiz	Yes	Resedentiol	UXO		
SE	ATC MDU#9									
SE	AF/0719/08130/016 and 015	High	Paktya	Lega Mangal	Kharzun	Yes	Grazing	AP	0	
SE	AF/0719/08130/017 and 018	High	Paktya	Lega Mangal	Kharzun	Yes	Grazing	AP		

Region	Task Name	Impact	Province	District	Village	Confirmed	Land Type	Mine Type	Area Size (Sqm)	Remarks
SE	ATC MDU#5 and 7									
SE	07/0719/017/044,017 and 028	High	Paktya	Jaji	Jaji	Yes	Grazing	AP+EOD	0	
SE	07/0719/017/044,074,15 and 022	High	Paktya	Jaji	Jaji	Yes		AP+EOD		
SE	MCPA DT#1									
SE	AF/0601/04114/123	High	Ghazni	Center	Arzo	Yes	Grazing	AP	52845	
SE	AF/0601/04114/121	High	Ghazni	Center	Pas Hesar	Yes	Agri+Grazing	AP	54210	
SE	MCPA DT#2									
SE	AF/0601/04114/120	High	Ghazni	Center	Pas Hesar	Yes	Agri+Grazing	AP	67762	
SE	AF/0601/04179/122	High	Ghazni	Center	Arzo	Yes	Agri	AP	53544	
SE	MCPA DT# 3									
SE	AF/0701/07278/SHA#3	High	Paktya	Gardiz	Zawo	Yes	Agri	AT+AP	260000	
SE	AF/0701/07278/238	High	Paktya	Gardiz	Zawo	Yes	Agri	AT	84714	
SE	MCPA DT#4									
SE	AF/0701/07278/SHA#2	High	Paktya	Gardiz	Zawo	Yes	Agri	AT+AP	260000	
SE	AF/0701/07278/238	High	Paktya	Gardiz	Zawo	Yes	Agri	AT	84714	
SE	AF/0701/07278/SHA#6	High	Paktya	Gardiz	Zawo	Yes	Agri	AT	65000	
SE	AF/0701/07277/237	High	Paktya	Gardiz	Azghana	Yes	Agri	AT	72383	
SE	AF/3211/07910/063	Meduim	Khost	Gurbuz	Bori khil	Yes	Grazing	AP	35000	
SE	AF/3211/07910/064	Meduim	Khost	Gurbuz	Bori khil	Yes	Grazing	AP	40000	
SE	AF/3206/07734/082	High	Khost	Mandozai	Hider khil		Agri	AT	36000	
SE	AF/3206/07734/083	High	Khost	Mandozai	Hider khil		Agri	AT	40000	
SE	MCPA DT#4									
SE	AF/3208/07945/018	High	Khost	Nadir shah	Mushkeen		Grazing	AP	38000	
SE	AF/3208/07945/019	High	Khost	Nadir shah	Mushkeen	Yes	Grazing	AP	35000	
SE	MCPA DT#4									
SE	AF/3206/07678/078	Meduim	Khost	Mandozai	Saleh kaly	Yes	Grazing	AT	35000	
SE	AF/3206/07678/079	Meduim	Khost	Mandozai	Saleh kaly		Grazing	AT	36000	
SE	MCPA DT#4									
SE	AF/3208/07945/022	High	Khost	Nadir shah	Almara	Yes	Grazing	AP	38000	
SE	AF/3208/07945/023	High	Khost	Nadir shah	Almara	Yes	Grazing	AP	37000	
	DT#06									
SE	AF/3211/07910/065	Low	Khost	Gurbuz	Towda china	Yes	Agri land	AT	35000	
SE	AF/3211/07910/066	Low	Khost	Gurbuz	Towda china	Yes	Agri land	AT	37000	
SE	AF/3206/07711/083	Meduim	Khost	Mandozai	Dad wal		Agri land	AT	40000	
SE	AF/3206/07711/084	Meduim	Khost	Mandozai	Dad wal	Yes	Agri land	AT	38000	
SE	AF/3206/07734/085	High	Khost	Mandozai	Sarbari	Yes	Grazing	AP	37000	
SE	AF/3206/07734/086	High	Khost	Mandozai	Sarbari		Grazing	AP	39000	
SE	MCPA EOD#1									
SE	AF/0701/000000/EOD.....	High	Ghazni	Center	Arzo(Unit arae)		Resedentiol	UXO		
SE	AF/0701/000000/EOD.vbv and Support	High	Ghazni	Center	Village by Village		Resedentiol	UXO		
SE	AF/0701/000000/EOD.vbv and Support	High	Ghazni	Center	Village by Village		Resedentiol	UXO		
SE	EOD	Meduim	Khost	Center	Village by Village		Agri	UXO		
SE	EOD	Low	Khost	Nadirsh K	Village by Village		Grazi	UXO		
SE	EOD	Meduim	Khost	Gorbaz	Village by Village		Resedentiol	UXO		
SE	EOD	High	Khost	Center	Village by Village		Grazi	UXO		

AMAC South
Operational Teamwise Plan 1386 (2007/08)

Region	Task Name	Cluster No.	Impact	Province	District	Village	Confirmed	Land Type	Mine Type	Area Size (Sqm)	Remarks
South	AF/2408/22155/084MF		Low	Kandahar	Panjwayi	Ashoqa	Y	Grazing	AT	21258	
South	AF/2408/22353/085MF		High	Kandahar	Panjwayi	Demaracy	Y	Grazing	AT	145983	
South	AF/2408/22353/086MF		High	Kandahar	Panjwayi	Demaracy	Y	Grazing	AT	146196	
South	AF/2408/22353/087MF		High	Kandahar	Panjwayi	Demaracy	Y	Grazing	AT	120000	
South	24/2414/064/062MF		High	Kandahar	Maywand	Haji M. Khan Kalay	Y	Ag	AP	51864	
South	24/2414/019/076MF		High	Kandahar	Maywand	Haji M. Khan Kalay	Y	Ag	AP	4256	
South	AF/2408/22300/067MF		High	Kandahar	Panjwayi	Hauz-e-Madad	Y	Ag	AP/AT	122723	
South	AF/2408/22300/069MF		High	Kandahar	Panjwayi	Hauz-e-Madad	Y	Ag	AP/AT	111114	
South	AF/2401/21529/434MF		Low	Kandahar	Kandahar	Khvosh Ab	Y	Ag	AP	6875	
South	AF/2401/21435/463MF		High	Kandahar	Kandahar	Kobay	Y	Grazing	AT	69183	
South	AF/2401/21435/474MF		High	Kandahar	Kandahar	Kobay	Y	Grazing	AT	130359	
South	AF/2401/21435/477MF		High	Kandahar	Kandahar	Kobay	Y	Grazing	AT	140736	
South	AF/2401/21435/480MF		High	Kandahar	Kandahar	Kobay	Y	Grazing	AT	146753	
South	AF/2401/21435/484MF		High	Kandahar	Kandahar	Kobay	Y	Grazing	AT	101341	
South	AF/2401/21459/388MF		Low	Kandahar	Kandahar	Monar	Y	Ag	AP	12251	
South	AF/2401/21459/380MF		Low	Kandahar	Kandahar	Monar	Y	Ag	AP	27028	
South	AF/2401/21459/372MF		Low	Kandahar	Kandahar	Monar	Y	Irr	AP	24241	
South	AF/2402/00000/266MF		High	Kandahar	Daman	Haji Bashar	Y	Grazing	AP	69550	
South	AF/2402/00000/260MF		Low	Kandahar	Daman	Haji Lalai Kalay	Y	Ag	AP/AT	52393	
South	AF/2402/00000/267MF		Low	Kandahar	Daman	Haji Lalai Kalay	Y	Ag	AP/AT	35000	
South	AF/2401/21521/506BF		High	Kandahar	Kandahar	Qashla-i-Jadeed	Y	Grazing	UXO	350000	
South	AF/2401/00000/496MF		Low	Kandahar	Kandahar	Mahi	Y	Ag	AT	20000	
South	AF/2401/00000/485MF		Low	Kandahar	Kandahar	Souf Kalay	Y	Grazing	AT	27386	
South	AF/2401/00000/493MF		Low	Kandahar	Kandahar	Souf Kalay	Y	Grazing	AP/AT	30000	
South	24/2414/045/152MF		Medium	Kandahar	Panjwayi	Pasab	Y	Ag	AT	59787	
South	24/2402/004/031MF		Low	Kandahar	Spin Boldak	H.Shah Mohad	Y	Road	AT	17424	
South	AF/2408/22298/088MF		Low	Kandahar	Panjwayi	Chilghor	Y	Road	AT	16937	
South	24/2404/066/136MF		Low	Kandahar	Kandahar	Shamsher Kalay	Y	Irr	AP	13825	
South	AF/2407/32179/176MF		Medium	Kandahar	Maywand	Sangi Hisar	Y	res	AT	140599	
South	AF/2407/32179/177MF		Medium	Kandahar	Maywand	Sangi Hisar	Y	res	AT	87333	
South	AF/2407/32179/178MF		Medium	Kandahar	Maywand	Sangi Hisar	Y	res	AT	117917	
South	AF/2407/32179/179MF		Medium	Kandahar	Maywand	Sangi Hisar	Y	res	AT	110000	
South	AF/2401/21483/439MF		Medium	Kandahar	Kandahar	Spin Kalacha	Y	Grazing	AP	529	
South	AF/2401/21483/482MF		Medium	Kandahar	Kandahar	Spin Kalacha	Y	Ag	AT	58460	
South	AF/2401/21483/483MF		Medium	Kandahar	Kandahar	Spin Kalacha	Y	Ag	AT	34344	
South	AF/2401/21483/444MF		Medium	Kandahar	Kandahar	Spin Kalacha	Y	Grazing	AP	5275	
South	AF/2401/21483/461MF		Medium	Kandahar	Kandahar	Spin Kalacha	Y	Grazing	AP/AT	114632	
South	AF/2401/21483/462MF		Medium	Kandahar	Kandahar	Spin Kalacha	Y	Grazing	AP/AT	123497	
South	24/2403/004/030MF		Medium	Kandahar	Spin Boldak	Takhta Pul	Y	Grazing	AP	57576	
South	AF/2411/21194/050MF		Medium	Kandahar	Spin Boldak	Takhta Pul	Y	Ag	AP	10746	
South	AF/2411/21194/052MF		Medium	Kandahar	Spin Boldak	Takhta Pul	Y	Ag	AP	20170	

Region	Task Name	Cluster No.	Impact	Province	District	Village	Confirmed	Land Type	Mine Type	Area Size (Sqm)	Remarks
South	24/2403/004/026MF		Medium	Kandahar	Spin Boldak	Takhta Pul	Y	Grazing	AP	34033	
South	AF/2411/21286/043MF		Medium	Kandahar	Spin Boldak	Takhta Pul	Y	Grazing	AP	64526	
South	AF/2411/21286/045MF		Medium	Kandahar	Spin Boldak	Takhta Pul	Y	Grazing	AP	36311	
South	AF/2411/21286/046MF		Medium	Kandahar	Spin Boldak	Takhta Pul	Y	Grazing	AP	40249	
South	AF/2411/21194/053MF		Medium	Kandahar	Spin Boldak	Takhta Pul	Y	Grazing	AP	38032	
South	24/2403/004/027MF		Medium	Kandahar	Spin Boldak	Takhta Pul	Y	Ag	AP	72393	
South	AF/2411/21286/047MF		Medium	Kandahar	Spin Boldak	Takhta Pul	Y	Ag	AP	13876	
South	24/2404/003/005MF		Medium	Kandahar	Kandahar	Temuryan	Y	Irr	AP	1004	
South	AF/2401/21477/492MF		Low	Kandahar	Kandahar	Zakar Sharif	Y	Grazing	AP/AT	45000	
South	AF/2401/21477/500MF		Low	Kandahar	Kandahar	Zakar Sharif	Y	Grazing	AP/AT	137805	
South	AF/2401/21477/501MF		Low	Kandahar	Kandahar	Zakar Sharif	Y	Grazing	AP/AT	139211	
South	AF/2401/21521/507BF		High	Kandahar	Kandahar	Qashla-i-Jadeed	Y	Grazing	UXO	340000	
South	AF/2401/21521/508BF		High	Kandahar	Kandahar	Qashla-i-Jadeed	Y	Grazing	UXO	410000	
South	AF/2401/21521/509BF		High	Kandahar	Kandahar	Qashla-i-Jadeed	Y	Grazing	UXO	320000	
South	AF/2401/21521/560BF		High	Kandahar	Kandahar	Qashla-i-Jadeed	Y	Grazing	UXO	400000	
South	AF/2411/21194/054MF		Medium	Kandahar	Spin Boldak	Takhta Pul	Y	Ag	AP	20000	
South	AF/2411/21194/055MF		Medium	Kandahar	Spin Boldak	Takhta Pul	Y	Ag	AP	30000	
South	AF/2411/21194/056MF		Medium	Kandahar	Spin Boldak	Takhta Pul	Y	Ag	AP	50000	
South	AF/2411/21194/057MF		Medium	Kandahar	Spin Boldak	Takhta Pul	Y	Ag	AP	45000	
South	AF/2408/22343/089MF		Medium	Kandahar	Panjwayi	Pasab	Y	Ag	AT	40000	
South	AF/2408/22343/090MF		Medium	Kandahar	Panjwayi	Pasab	Y	Ag	AT	20000	
South	AF/2408/22343/091MF		Medium	Kandahar	Panjwayi	Pasab	Y	Ag	AT	50000	
South	AF/2408/22343/092MF		Medium	Kandahar	Panjwayi	Pasab	Y	Ag	AT	45000	
South	AF/2408/22343/093MF		Medium	Kandahar	Panjwayi	Pasab	Y	Ag	AT	60000	
South	AF/2408/22343/094MF		Medium	Kandahar	Panjwayi	Pasab	Y	Road	AT	30000	
South	AF/2408/22343/095MF		Medium	Kandahar	Panjwayi	Pasab	Y	Road	AT	50000	
South	AF/2408/22343/096MF		Medium	Kandahar	Panjwayi	Pasab	Y	Road	AT	35000	
South	23/2310/032/008MF		Medium	Helmand	Nad Ali	Chahi Anjir	No	Road	AP	7434	
South	AF/2304/20361/025MF		High	Helmand	Musa Qala	Shawaroz	No	Grazing	AP/AT	110593	
South	AF/2304/20361/024MF		High	Helmand	Musa Qala	Shawaroz	No	Grazing	AP/AT	61931	
South	23/2305/004/020MF		High	Helmand	Musa Qala	Takhta Pul Kalay	No	Grazing	AT	102415	
South	AF/2304/20367/026MF		High	Helmand	Musa Qala	Takhta Pul Kalay	No	Grazing	AT	87651	
South	AF/2304/20367/023MF		High	Helmand	Musa Qala	Takhta Pul Kalay	No	Grazing	AT	27718	
South	AF/2304/20367/027MF		High	Helmand	Musa Qala	Takhta Pul Kalay	No	Grazing	AT	72393	
South	23/2305/004/021MF		High	Helmand	Musa Qala	Takhta Pul Kalay	No	Ag	AT	104555	
South	22/2204/018/037MF		Low	Nimroz	Khash Rod	Shash Abah	No	Ag	AT	152268	
South	22/2204/018/036MF		Low	Nimroz	Khash Rod	Shash Abah	No	Ag	AT	152115	
South	25/2501/064/059MF		Medium	Zabul	Qalat	Mirza Faydzullah	No	Grazing	AP	16884	
South	AF/2401/21477/561MF		Low	Kandahar	Kandahar	Zakir Sharif	Y	Ag	AP/AT	50000	
South	AF/2401/21477/562MF		Low	Kandahar	Kandahar	Zakir Sharif	Y	Ag	AP/AT	20000	
South	AF/2401/21477/563MF		Low	Kandahar	Kandahar	Zakir Sharif	Y	Ag	AP/AT	42000	
South	AF/2401/21477/564MF		Low	Kandahar	Kandahar	Zakir Sharif	Y	Ag	AP	30000	
South	AF/2402/00000/269MF		High	Kandahar	Daman	Haji Bashar	Y	Grazing	AP	40000	
South	AF/2402/00000/270MF		High	Kandahar	Daman	Haji Bashar	Y	Grazing	AP	20000	
South	AF/2402/00000/271MF		High	Kandahar	Daman	Haji Bashar	Y	Grazing	AP	25000	
South	AF/2402/00000/272MF		High	Kandahar	Daman	Haji Bashar	Y	Grazing	AP	30000	