



MINE ACTION PROGRAMME FOR AFGHANISTAN



A deminer during Mine Clearance Operation

**National Operational Work Plan 1384
(2005/06)**



Contents

<u>Subject</u>	<u>Page</u>
Introduction	1
Aim	1
Mined Area Situation	1
Security	3
Objectives	3
Priorities	8
Available Resources	10
Team Structure and Composition	12
Resources Allocation	13
Quality Management	14
Technical and Training Development	15
Conferences and Working Groups	15
Public Holidays	17
Area Work Plans	18
Conclusion	18

Annexes:

- A. LIS Map 2005
- B. Targets and objectives for 2005/06
- C. Program Linkage to Authorities and Communities
- D. Resources and allocation 2005/06
- E. MRE Resource Allocation 2005/06
- F. EOD Team Deployment 2005/06

National Operational Work Plan for 2005/06

MINE ACTION PROGRAMME FOR AFGHANISTAN

1 April 2005 to 31 March 2006

Introduction

1. Landmines and Explosive Remnants of War (ERW) contamination impacts some 2,400 communities in Afghanistan, communities where an estimated 4.2 million Afghans live. The Mine Action Programme for Afghanistan, with its workforce of some 8,000 personnel undertakes a diverse range of activities in support of this beneficiary group, including, implementation of mine risk education, technical training related to mine action, general and technical information gathering as well as clearance of area contaminated by mines/ERW.

Aim

2. This national operational plan for 2005/06 is a technical document intended primarily for use within the Mine Action Programme for Afghanistan (MAPA). This document allocates MAPA resources coordinated by the United Nations Mine Action Center for Afghanistan (UNMACA) to achieve overall programme objectives. The Area Mine Action Centers (AMACs) and MAPA Mine Action Implementing Partners (IP) are to use this document to guide their activities during the work year 2005/06. It will also be used as the basis for IP project proposals, and operational and training plans. The National Operational Work Plan is a dynamic document that will be re-evaluated on a continual basis and through formal quarterly review workshops. This plan has been developed in consultation with the Government of Afghanistan's Department for Mine Clearance.

Mined Area Situation

3. The Afghanistan Landmine Impact Survey (ALIS) provides a national ranking of mine/ERW impact on communities. In relation to the ALIS results, the MAPA prime priority for this year is to focus on those Communities that are listed as being High Impacted or having the highest number of accidents and incidents and in particular those Suspected Hazardous Areas (SHA) that contribute to their rank. The MAPA will also focus on reconstruction support mine clearance for national infrastructure projects and on clearing areas that impede the return of refugees and internally displaced persons (IDP).

The following table provides a list of impacted communities, by region and level of impact.

Impact Communities	Central	Eastern	Southeastern	South	North	Western	Total
High	136	4	28	17	63	20	268
Medium	209	22	47	46	105	49	478
Low	492	100	254	177	433	141	1597
None	8	9	0	1	6	1	25
Grand Total	845	135	329	241	607	211	2368

4. What in the past were known as “mined areas” or “dangerous areas” (“minefields” refer to the mined areas after technical survey) shall now be known as SHA. Each of the impacted communities are affected by SHA that are defined as being High, Medium or Low impact with supporting blockage factors linking the importance of each SHA to communities. Targeting all high impact SHA will be the top priority, in order to reduce the number of High Impacted Communities. The following chart indicates the number of SHA per level of impact, and the number of square meters associated with each:

SHA "Impact" Cat.		Community Impact Category			
		High	Medium	Low	Total
High	#	231			231
	sqkm	52.4			52.4
Medium	#	211	412		623
	sqkm	38.1	116.3		154.4
Low	#	276	643	2741	3660
	sqkm	28.6	96	384.5	509.1
Total	#	718	1055	2741	4514
	sqkm	119.1	212.3	384.5	715.9

- 5 For planning purposes assets will be applied to address the highest impact category of SHA in each of the levels of impacted communities, with a primary focus on high impact SHA.
- 6 There remain five districts that require the ALIS to be conducted, once the security situation allows. Information on new SHA in and around communities and roads will likely continue to be reported to mine action organizations, particularly as more refugees and IDPs return. These SHAs will be identified against those communities that they are linked to in order to update and maintain the LIS database. In addition, teams will continue to actively update the ALIS data in communities that are not reporting newly discovered SHA.
- 7 Annex A shows a map of known Impacted Communities as of 6 January 2005.

8. Reconstruction support clearance assets as allocated in annex D are controlled by the Project Officer through each of the site offices. Clearance activities and support to contractors shall be in accordance with contracts.

Security

9. As all but two of Afghanistan's provinces are impacted by mines/ERW, the issue of physical security is of major concern. In the coming year it is anticipated that there may be an increase in security incidents, especially around the time of Parliamentary elections. The main risks are associated with direct targeting of mine action personnel by insurgent forces intent on disrupting reconstruction efforts, particularly in Southern and Eastern regions of the country. Additional risks exist due to general criminality throughout the country.

10. The security requirements outlined in the MAPA Security SOP are to be followed by all MAPA agencies during the execution of this work plan:

11. The MAPA will not conduct operations in any areas where Coalition operations are ongoing, where there is internal conflict or fighting, or where UN security assessments indicate that it is not safe to continue operations. Security incidents must be reported through the applicable AMAC or reconstruction site office as soon as possible. MAPA agencies should keep themselves abreast of security developments and should seek security advice when moving into questionable areas.

Objectives

12. Programme Vision and overall Goal:

The Islamic Republic of Afghanistan is committed to the vision of an Afghanistan free from landmines and explosive remnants of war (ERW), where individuals and communities live in a safe environment conducive to national development and where landmine and ERW survivors are fully integrated in society and thus have their rights and needs recognized and fulfilled.

The overall objective for the National Operations Plan for 2005/06 is to:

To reduce the impact of mines and explosive remnants of war on communities and returnees using all available means; and to support national development through targeted clearance of mines/ERW impacting national infrastructure projects.

Specific objectives are as follows:

13. **Clearance:** Clearance activities during 2005/06 will support the ALIS identified high impacted communities and the needs of reconstruction projects and returnees. The ALIS now informs prioritization and therefore targets and goals. It is anticipated that the national outputs for 2005/06, based on the planned expansion, will be **13.8 sq km** of mine impacted community SHA cleared, **16.1 sq km** of contaminated land for reconstruction needs cleared and **42.5 sq km** of ERW impacted community SHA cleared. The detailed targets and objectives for 2005/06, by IP, and by areas, are shown at Annex B. The areas planned to be cleared, or permanently marked, in 2005/06 are shown in the table below.

MAPA SHA & BAC Clearance Targets for 2005 / 2006

Area Mine Action Centre	Impacted Community	Minefield SHA Priority Area to be Cleared (sqm)	SHA to be Permanently Marked (sqm)	Battlefield SHA Area to be Cleared (sqm)
Centre	High			
	Medium			
	Low			
Total		2,885,080		22,680,000
North	High			
	Medium			
	Low			
Total		3,070,560	864	22,680,000
South	High			
	Medium			
	Low			
Total		2,291,940	2592	6,480,000
East	High			
	Medium			
	Low			
Total		1,241,320		2,700,000
South East	High			
	Medium			
	Low			
Total		2468,140		1,890,000
West	High			
	Medium			
	Low			
Total		1,903,440		6,480,000
Grand Total		13,830,480	3,456 permanent Mks	42,498,000

MF & BF SHA Priority Area targets for this table will be added by mid July 2005.

14. **Survey:** The programme plans to continue survey activities during 2005/06 that will include:

- Landmine Impact survey (LIS) of areas that have not been identified until now due to security problems and/or inaccessibility.
- Landmine Impact Assessment teams (LIAT) will conduct ongoing confirmation assessments. The purpose of confirmation assessments is to validate and update the data gathered during the LIS. They provide guidance on the resources necessary to reduce the impact on the target community from high to medium to low to no impact.
- Post Demining Impact Assessment (PDIA). A minimum of six months after the demining operations have been completed a PDIA is carried out to check that the demining work carried out has achieved its purpose. This assessment will also identify if there are any other previously unknown SHA impacting on the community. If there are, the PDIA team will conduct a general survey of these areas. This survey is similar to a confirmation assessment.
- Technical survey and marking of some **15.7 sq km** of minefield SHAs, **13.4 sq km** of minefields for reconstruction support and **31.0 sq km** of battlefield SHA to allow the efficient application of clearance resources.
- Permanent marking of low impact SHA, and those high/medium impact SHA that cannot be cleared with the demining technology currently in use by MAPA. This will largely be achieved through the Disarmament, Demobilization, and Reintegration (DDR) Mine Action for Peace (MAFP) project. It is planned that **6.9 sq km** of permanent marking using stones/concrete to identify the perimeters of SHAs will be achieved in 2005/06.

The rapid road survey capability Mechem Explosives and Drugs Detection System (MEDDS), operating with MECHEM, will have 3 teams (2 Combined teams and one Manual team) operating in 2005/06. Each Combined team is capable of reducing 5 km a day to a total width of 50m (i.e. 250 000sqm a day).

The detailed survey targets for 2005/06 are shown at Annex B.

15. **Mine Risk Education:** UNMACA, with technical assistance from UNICEF, will maintain responsibility for the coordination of MRE implementation and capacity building for MRE partners within the MAPA. The MRE programme will continue to deliver MRE to a variety of target groups through direct implementation, mass media campaigns, and integrated community based and social programmes. MRE will focus on and further develop the following components of the programme:

a. **Community Based MRE (CB MRE)**

- **Community Based MRE Volunteer/Liaison:** Implemented by MAPA MRE agencies. Continue the Community Based MRE programme through MAPA implementing agencies, materials distribution, technical support and M&E activities. Base implementation and activities on ALIS data to target communities with appropriate levels of intervention. Link Community Based MRE to health and social programmes implemented at the community level by government or other humanitarian agencies. Internally displaced persons (IDP) camps are now considered to be communities and are included as part of these programmes
- **Emergency Response MRE:** Implemented through MAPA agencies as the first response or extension of Community Based MRE activities.
- **Direct MRE:** Implemented by MAPA survey and clearance agencies. Continue to provide direct MRE to communities in coordination with community based programme activities. Maintain MRE capacity through training and refresher training for all survey and clearance agencies regionally.
- **Mine Risk Education in Schools:**
 - **Formal School Program:** Implemented by Ministry of Education with support from UNICEF. Continued provision of technical support to the Ministry of Education from UNICEF, UNMACA and the MAPA's Monitoring, Evaluation and Training Agency (META). Follow up activities through MAPA MRE partners to ensure at least two teachers in impacted communities are trained in MRE and provided with standardized MRE training kits
 - **Community Based Teaching Programme:** Implemented by Ministry of Education with support from UNICEF. Training and materials provided to approximately 10,000 community based teachers.

b. **Public Information and Mass Media Campaigns**

- **Print, Radio, Video, TV, signboards media:** Implemented by UNICEF, UNMACA, Government of Afghanistan and MAPA MRE agencies. Continuation of BBC-AEP programme activities. Continued implementation of cross cutting mass media campaigns to augment the integrated approaches of community based, schools, direct, and emergency response MRE programs through META, AAR Japan, UNICEF and UNMACA. Continue capacity building with META to provide mass media materials development, with support from UNICEF and AAR Japan

c. **Returnee/Encashment Centre MRE Programme**

Direct MRE and materials distribution: Implemented by MAPA MRE agencies. Continued implementation of Returnee MRE activities at the UNHCR encashment centers at border crossing points within Afghanistan on the Pakistan and Iran borders.

d. MRE Quality Assurance Programme

- **Monitoring and Evaluation:** Implemented by MAPA MRE agencies. Continued internal and external monitoring and evaluation of MRE field activities. Implementations of Knowledge, Attitude and Practice Survey (KAP) to measure impact of MRE programme activities. Strengthen agency monitoring practices and data entry mechanisms. Provide feedback to MRE agencies for improved implementation practices. Strengthen reporting mechanisms of MRE programme for monitoring, evaluation and materials distribution.

The table below indicates the MRE resources/assets available to the programme in 2005/06:

Agency	Mine Risk Education Approach	No. of Teams	No. of Trainers or QA supervisors
OMAR	Community based and returnee activities	13	26
	Aid worker Training	1	2
	Returnee/Encashment Activities	3	18
HIB	Community based and returnee activities	21	55
	Returnee/Encashment Activities	3	12
HT	Direct and community based activities		
AAR Japan	Public information, materials development and production, mobile cinema activities	2	4
BBC-AEP	MRE messages through “New Home, New Life” soap opera and other radio educational programs	N/A	N/A
META	MRE Training	1	3
	Quality Assurance activities	4	8
MAFP	Direct MRE activities through CB Demining programme	15	30
ARCS/ICRC	Community based activities	20	27
Total	All MRE Components	80	185

16. **Monitoring and Training:** The Monitoring, Evaluation and Training Agency, (META) will conduct operations through 2005/06 with 7 Technical Training Teams (TTT), 21 Quality Management and Inspection Teams (QMITs), 3 Quality Assurance Investigation Teams (QAITS), 1 MRE Training Team, 4 MRE Monitoring and Evaluation Teams, and 2 Management Teams. They will continue to provide technical training, performance evaluation (External Quality Assurance and Quality Control), and technical advice to the Mine Action IPs. The following courses will be conducted by META, based on the expansion for the year 2005/06.

NGO	Deminers Course	Demining Pre-Deployment Courses	Demining Team Leaders Course	Special Courses	Basic Management Course	Middle Management course
ATC	3	3	3	Short courses for all mine action agencies	2 Courses for all Mine Action Agencies	3 Courses for all Mine Action Agencies
MDC	4	4	3			
DAFA	2	2	1			
MCPA	3	3	2			
OMAR	2	2	1			
Total	14	14	10			

Note: some special courses are planned for all mine action agencies during the year 2005/2006. The exact number is not specified yet. After discussions with Cranfield University the exact number will be specified.

Below are the priority training activities of META in 2005/06:

- (i) Conduct 14 Deminers Course (DC) for manual clearance teams and mine dog groups.
- (ii) Conduct 14 Demining Pre-Deployment Courses for MAPA clearance agencies
- (iii) Conduct 10 Demining Team Leaders Course (DTLC) for manual clearance teams and mine dog groups.
- (iv) Conduct 3 Middle Management Courses.
- (v) Conduct 2 Basic management courses and some other Special Courses for Finance, Human Resource Management.

17. **Mine Action for Peace (MAFP)**. MAPA will participate in the government sponsored DDR programme under the auspices of the Afghan New Beginnings Programme (ANBP). Specifically, the MAFP project will implement reintegration activities, using a community based demining approach in a number of communities. Depending on the availability of funding it is intended to develop between five and twenty-five Mine Action teams (clearance, marking, BAC, mine risk education) depending on local community need. These will be deployed in mine impacted communities throughout Afghanistan where soldiers are demobilized.

18. **Priorities**

The Governmental prioritization policy is: *To reduce the impact of mines and explosive remnants of war on communities and returnees using all available means; and to support national development through targeted clearance of mines/ERW impacting national infrastructure projects.*

The following factors will be considered when allocating mine action resources and in prioritizing of demining capacities throughout Afghanistan;

- The Community Impact of Suspect Hazardous Areas (SHA), as reflected in the Afghan Landmine Impact Survey (ALIS), will be utilized to reduce the human suffering from landmines and ERW;
- All known highly impacted communities should be addressed by the end of 1388 and significant reduction of medium and low impacted communities should be completed 1393;
- Resource allocation to different regions of the country will be guided by; security, climatic conditions and density of impacted communities;
- Mine action strategic and operational planning will be aligned with the Afghan Governments overall developmental strategy, goals and plans. Presently the infrastructure reconstruction priority is as follows; road networks, power grids/communications, water systems and water sheds.
- A humanitarian, developmental and peace building balance of mine and ERW demining capacities will be maintained.
- A core of management and demining resources will be available to carry out surveys and coordinate the formulation of clearance plans and contractual arrangements

Operational Priority System

Guiding factors/conditions for operational prioritization are as follows:

Priority One

- ALIS high impacted communities, and/or
- Casualties - Where civilian mine/UXO casualties are occurring at an estimated rate indicating a clear and imminent danger and/or
- Repatriation – Where demining is needed to support repatriation of refugees or internally displaced persons (IDP) who are currently returning or will return immediately upon the completion of clearance activities, and/or
- Rehabilitation/Development - Mine action requests to support rehabilitation/ development projects that are planned to commence immediately once clearance activities have been completed, and/or
- Other -Request to clear areas vital to the population (life saving/life sustaining) and no other alternatives exist (e.g. hospitals, village water supplies/wells)

Priority Two

- ALIS medium impacted communities, and/or
- Casualties: Areas where the estimated rate of civilian mine ERW casualties indicate a significant danger and/or
- Rehabilitation/Development. Requests where plans for operations have been completed, but where funds are not currently available to undertake the project and/or
- Repatriation: Requests to support repatriation of refugees/IDPs where the return is likely to occur within 12 months of the task being completed, and/or
- Other: Requests that are significant (but not vital) to the economy or general well-being of a community

Priority Three

- ALIS low impacted communities, and/or
- Rehabilitation/Development. Requests where the project concept has been approved but where detailed plan and/or funds will not be available for at least 1-2 years, and/or
- Repatriation. Requests to support repatriation of refugees/IDPs where the return is likely to occur in the next 1-2 years, and/or
- Other: Requests where clearance would make some contribution to the ongoing economic development and physical well being of the population (endorsed by local council/shura).

Priority Four

All requests not covered in Priorities 1-3 where demining will improve local conditions.

19. The Department of Mine Clearance, district administrators, and province governors, at their levels, are closely involved in setting of priorities for mine action. Annex C shows a chart displaying the involvement of partners in priority setting.

Available Resources

20. The following table shows the changes in the number of resources that will be available with the MAPA implementing partners in 2005/06 (Mine Awareness and Mine Action For Peace resources are shown in a separate table):

Type of Resources	Agency	Available	Expansion		Total
			Humanitarian	Reconstruction	
Manual	ATC	25	0	0	25
	DAFA	18	0	0	18
	OMAR	13	0	0	13
	DDG	4	0	0	4
	HALO	44	0	0	44
CBMCT	ATC	5	0	0	5
Total Manual Teams		109	0	0	109
MDU	ATC	10	0	0	10
	DAFA	5	0	1	6
	OMAR	6	0	0	6
	DDG	1	0	0	1
	HALO	19	0	0	19
Total MDU		41	0	1	42
MDG	MDC	33	0	0	33
Tech. Survey	MCPA	41	0	(1MDS)	41
LIAT	MCPA	16	0	0	16
MEDDS	MECHEM	4	0	0	4
Tech. Survey	HT	14	0	0	14
LIAT	HT	5	0	0	5
Total Survey Teams		80	0	0	80
QMIT	META	20	0	(1)	21
Dog set		8	0	0	8
Total QMIT		20	0	1	21
EOD	ATC	12	0	0	12
	DAFA	4	1	0	5
	OMAR	2	0	0	2
	DDG	16	0	0	16
	HI	2	0	0	2
	RONCO	5	0	0	5
	HALO	13	0	0	13
Total EOD Teams		54	1	0	55

Team Structure/Composition

21. The individual teams depicted above have a different set of capabilities and relative advantages based on ground type, weather and the presence of different types of landmines. The make up of the available assets is as follows:

- a. **Manual Clearance Teams (MCT)** of ATC, OMAR, and DAFA consist of 32 men. HALO Trust manual teams consist of 30 persons, and DDG teams consist of 27 persons. These MCTs are employed on clearing anti-personnel (AP) and anti-tank (AT) minefields located in agricultural, irrigation, residential, and grazing lands.
- b. **Mine Dog Group (MDG)** is composed of 30 men and 4 dogs. Although limited by certain types of terrain and vegetation, MDGs can generally clear the areas contaminated with minimum metal content mines. Clearance of most of the roads and anti-tank minefields will be also conducted by MDGs.
- c. **Mechanical Demining Unit (MDU)** is composed of one armored machine, which works to support manual clearance teams and is comprised of 10 personnel. MDUs concentrate their efforts on vegetation removal/ground preparation or clearing collapsed urban areas and irrigation systems that cannot be cleared by the present manual clearance and mine detection dog technology.
- d. **Mine Survey Team (MST)** consists of 7 men. The survey teams are supported by a Mine Dog Set (MDS) consisting of 5 men and 2 dogs.
- e. **Landmine Impact Assessment Team (LIAT) Survey Team** consists of 2 surveyors and 1 driver. To conduct confirmation assessment and or post demining impact assessments.
- f. **Community Based Mine Clearance Team (CBMCT)** under the Afghan Technical Consultants (ATC) are manual clearance teams consist of 31 men. These teams are to continue working in anti-personnel minefields in agricultural, irrigation, residential and grazing lands of Nangarhar province.
- g. **Battle Area Clearance Teams (BAC)** are MCTs cross-trained in battlefield clearance techniques. All manual clearance teams within the programme are cross-trained for conducting BAC operations and demolitions of ordnance up to 85 mm.
- h. **Explosive Ordnance Disposal (EOD)** teams of OMAR, DAFA and ATC are composed of 14 personnel and EOD teams of DDG and HT are composed of 4 men. HIB EOD team is 5 men and RONCO Stockpile Destruction EOD teams are 12 men. In 2005/06, the EOD capacity will be used to focus on the destruction of high threat/high technology ERW in all land types throughout the country. Teams will be tasked throughout 2005/06 to attend priority emergency tasks, village-by-village operations, and deal with other EOD related items in BAC Tasks. RONCO EOD teams will mainly deal with stockpile destruction. The "EOD Team Deployment" is attached as Annex F to this document.

- j. **Mine Risk Education** teams are generally composed of 2 instructors and in some cases could be increased to 3 instructors.
- k. **Quality Management Inspection Teams** (QMIT) of META are composed of 3 men.
- l. **Technical Training Teams** of META are composed of 4 men.
- m. **Quality Assurance Investigation Teams** (QAIT) of META are composed of 3 men.
- n. **META Mine Risk Education Teams** are composed of 3 men.

Resources Allocation

22. Programme assets will operate on a two-season system (summer and winter), with resources moving between regions during the seasonal changeover. This will ensure that assets are used in weather conditions that will allow the greatest annual outputs of cleared lands. Generally teams will move from higher elevation areas with more extreme conditions to lower lying areas with more moderate conditions.

23. **Seasons:** The proposed 1384 2005/06 mine action seasons are:

- (i) Summer: 1 April 05 - 31 Oct 05
- (ii) Winter: 1 Nov 05 - 31 Mar 06

24. The actual deployment/changeover dates from region to region may vary, and depends on weather, continuation of task, and security. Survey teams will conduct their seasonal changeover one month prior to the movement of clearance teams to ensure that a sufficient number of tasks are surveyed, re-surveyed, or remarked and are available for clearance work to begin.

25. During the winter season, survey and clearance teams from Central, Northern and South-Eastern areas will be deployed in Southern, Western and Eastern areas where the weather is warmer. EOD operations will generally be unaffected and the teams will be able to operate during all the year in all locations.

26. Mine Risk Education activities are largely unaffected by the weather and will operate in all the regions without any seasonal change in their locations. The MRE Resources Allocation is attached as Annex E.

27. The actual locations of mine action resources within an area during any given period will be determined by the AMAC or reconstruction project office, based on national planning priorities. If resources are required to move out of the areas of responsibility of an Area Manager, Plans Section UNMACA will coordinate the movement in consultation with the relevant AMAC's, and the agency involved. Tables showing the Summer and Winter resource allocations are attached as Annex D to this document.

Quality Management

28. The programme aims to implement a Total Quality Management (TQM) approach, but acknowledges that this will take time to achieve. During 2005/2006 META will continue to be the implementing partner to UNMACA in Quality Management (QM) activities, with an emphasis on promoting TQM aspirations, this will include:

- (i) The establishment of an additional 2-man Quality Management Inspection Team (QMIT), operational in April 2005. These will primarily support META's demining projects, bringing the total number of QMITs up to 21 teams.
- (ii) Establishment of a QM database to facilitate recording, reporting and analysis of QA and QC inspection results.
- (iii) Introduction of an MDD accreditation system. This was delayed during 2004 due to budgetary constraints and degenerating security, and has become a high priority task for 2005.
- (iv) Improving the quality of training by adopting a systems approach to provide a mechanism for effective and responsive review of all META-delivered courses.

29. META QM activity will include:

- (i) External Quality Assurance (QA) inspections to ensure safety and quality of work by promoting effective internal QA. The target rate will be 1-3 QMIT inspections per month on all demining worksites, with a minimum of one inspection per month at each worksite.
- (ii) Quality Control (QC) through a process of progressive clearance samplings, post-clearance sampling supported by MDD and manual clearance assets where necessary. QC inspections will be carried out on all reconstruction tasks.
- (iii) Implementation of MDD accreditation, including the establishment of at least 2 MDD accreditation sites.
- (iv) Incident/accident investigation as necessary.
- (v) QA inspections of MEDDS operations, as directed by MACA

Technical and Training Development

30. Technical development activities will continue to be centrally managed by UNMACA technical staff, assisted if required by META, Technical Working Groups and/or other selected IPs. The following activities will be carried out in 2005/2006:

S#	Topic	Priority
1	Internationally assisted trials into the capabilities, reliability, and limitations of mine detection dogs.	1
2	Mine dog accreditation, site set-up and licensing	1
3	Targeted management training to cover specific skills and needs.	2
4	Introduction of additional QMITs during 2005/2006	1
5	Quality Assurance of MRE school project.	2
6	Training the trainers of all MAPA partners in mine risk education.	1
7	Development of MRE training methodology and evaluation of this project.	1
8	Conduct trials to improve the present low order explosive destruction techniques and explosive capability trials.	1
9	Review and update the SOPs for the manual clearance of mined area.	2
10	Improved quality control mechanism for all demining tasks.	2
11	Improved system of analysis of QA and QC inspection results.	1
12	Development of QA/QC system and external validation of the MEDDS system.	1
13	Development and introduction of Afghanistan Mine Action Standards (AMAS).	1
14	Evaluation and assessment of the NGOs management capacity.	2
15	Implement recommendations of the 2003 evaluation and assessment of MDD operations and training.	2

Conferences and Working Groups

31. In the MAPA there is a need for effective management and coordination of activities to ensure safe, efficient and effective operations. The interdependence of MAPA activities means that decision-making, programming, and problem solving needs to be achieved via informed discussion. To that end, a system of meetings and working groups has been developed. The following meetings and workshops are planned for 2005/06:

Yearly Schedule for MAPA Conferences/ Working Groups 1384 (2005/06)		
Event	Date	Location
Medical TWG	06 April 2005, 22 May 2005, 06 July 2005 05 Sep 2005, 26 Oct 2005, 20-21 Dec 2005	Kabul
Mechanical TWG	11 April 05, 3 May 05, 5 July 05, 13 Sep 05, 9 Nov 05, 16 Jan 06	Kabul
EOD TWG	4 April 05, 13 Jun 05, 01 Aug 05, 04 Oct 05, 19 Dec, 13 Feb 05.	Kabul
MRE TWG	10 July 2005	Kabul
MIS TWG	10 July 2005	
Survey and Clearance TWG	11 July 2005	
TQM TWG	12 July 2005	
First Quarterly Review- 2005/06 (1384)	13 July 2005	
Operations TWG	14 July 2005	
MRE TWG	09 Oct 2005	Kabul
MIS TWG	09 Oct 2005	
Survey and Clearance TWG	10 Oct 2005	
TQM TWG	11 Oct 2005	
Mid-term Review- 2005/06 (1384) & Initial Planning Preparation workshop 2006/07 (1385)	12 Oct 2005	
Operations TWG	13 Oct 2005	
MRE TWG	08 Jan 2006	Kabul
MIS TWG	08 Jan 2006	
Survey and Clearance TWG	09 Jan 2006	
TQM TWG	10 Jan 2006	
Third Quarterly Review- 2005/06 (1384) & Planning Preparation workshop 2006/07 (1385)	11 Jan 2006	
Operations TWG	12 Jan 2006	
MRE TWG	09 April 2006	Kabul
MIS TWG	09 April 2006	
Survey and Clearance TWG	10 April 2006	
TQM TWG	11 April 2006	
Last Quarterly Review- 2005/06 (1384)	12 April 2006	
Operations TWG	13 April 2006	

Public Holidays

32. The following dates are the authorized public holidays for Mine Action agencies working in Afghanistan for 2005/06:

S/No	Event	Date	Day
1	Prophet's M. Birthday*	21 April 05	Thursday
2	V Day of Islamic Government	27 Apr 05	Tuesday
3	Independence Day	21 Aug 05	Sunday
4	Masood's Martyrdom Day	9 Sep 05	Friday
5	First of Ramadan*	5 Oct 05	Wednesday
6	Eid - ul – Fitr *	3-6 Nov 05	Thursday - Sunday
7	Christmas Day**	25 Dec 05	Sunday
8	New year's Day**	1 Jan 06	Saturday
9	Eid - ul – Qurban (21-22 Jan for UN)*	20-22 Jan 06	Friday - Saturday
10	Tenth of Muhram*	19 Feb 06	Saturday
11	Afghan New year	21-Mar 06	Wednesday
12	Education Day	22-Mar 06	Thursday

* Subject to change depending on the lunar phase

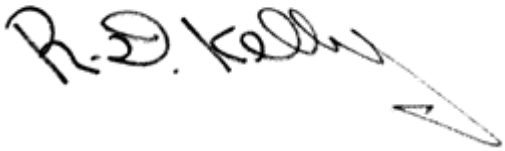
** Not a governmental Holiday

Area Work Plans

33. All AMACs and Sub- AMACs are to review their Area Operational Work Plan, and forward it to the MACA by 15 April 2005 for final approval.

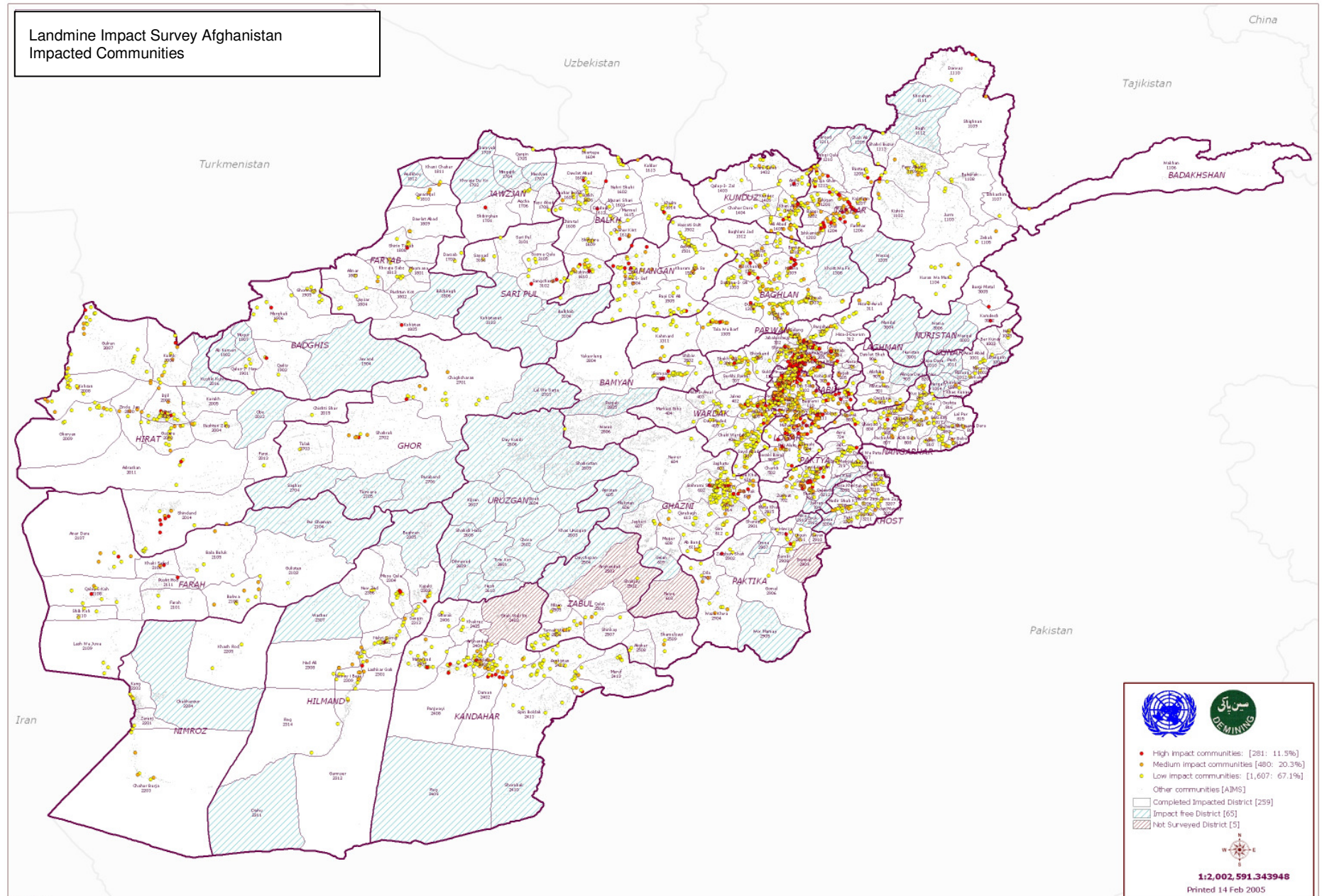
Conclusion

34. The plan put forth in this document provides the MAPA with a roadmap for supporting the achievement of the Government of Afghanistan's humanitarian and development goals. It is also the foundation for the development of Implementing Partner plans and therefore all mine action organizations coordinated by the UNMACA should develop their own plans for 2005/2006 to support this work plan and where necessary consult with UNMACA on any required changes.

A handwritten signature in black ink, reading "R.D. Kelly", followed by a long, sweeping horizontal stroke that ends in a small upward flick.

Richard Dan Kelly
Programme Manager
UNMACA, MAPA
1 April 2005

Annex A to National Operational Work Plan 1 April 2005



Targets and Objectives for 2005/06 (1384)
Clearance, Survey, QMIT & EOD Target for Humanitarian and Reconstruction Activities

Activity Area	Agency	HUMANITARIAN						RECONSTRUCTION	
		C	S	N/NE	W	E	SE	USAID/GOJ/WB	EC (Note 1)
Minefield Clearance with MCTs	ATC	14t/m @ 15500=217000	15 t/m @ 15500=232500	60 t/m @ 15500=930000	-	14 t/m @ 15500=217000	77 t/m @ 15500=1193500	-	-
	DAFA	-	48 t/m @ 15500=744000	-	36 t/m @ 15500=558000	-	-	-	-
	OMAR	24 t/m @ 15500=372000	-	-	-	-	12 t/m @ 15500=186000	-	-
	DDG	48 t/m @ 3000=144000	-	-	-	-	-	-	-
	HALO	220 t/m @ 5076=1116720	-	100 t/m @ 5076=507600	-	-	-	-	-
MF Clearance with CBMCT	ATC	-	-	-	-	60 t/m @ 8000=480000	-	-	-
Total		1,705,720	976,500	1,437,600	558,000	697,000	1,379,500	300 t/m @ 15500=4,650,000	24 t/m @ 15500=372,000
Grand Total		6,754,320 sqm						5,022,000 sqm	
Battle Area Clearance (BAC)	ATC	12 t/m @ 270000=3240000	-	12 t/m @ 270000=3240000	-	10 t/m @ 270000=2700000	7t/m @ 270000=1890000	-	-
	DAFA	-	24 t/m @ 270000=6480000	-	-	-	-	-	-
	OMAR	-	-	-	24 t/m @ 270000=6480000	-	-	-	-
	DDG	-	-	-	-	-	-	-	-
	HT	60 t/m @ 324000=19440000	-	60 t/m @ 324000=19440000	-	-	-	-	-
Total		22,680,000	6,480,000	22,680,000	6,480,000	2,700,000	1,890,000	0	0
Grand Total		42,498,000 sqm						0	
MF Clearance with MDGs	MDC	26t/m @45360=1,179,360	29t/m @45360=1,315,440	36 t/m @45360=1,632,960	29t/m @45360=1,315,440	12t/m @45360=544,320	24t/m @45360=1,088,640	228 t/m @45360=10,342,080	12 t/m @45360=544,320
Grand Total		7,076,160 sqm						10,086,400 sqm	
MF Technical Survey	MCPA	45t/m @ 58000=2610000	36 t/m @ 58000=2088000	41 t/m @ 58000=2378000	24 t/m @ 58000=1392000	31 t/m @ 58000=1798000	22 t/m @ 58000=1276000	216 t/m @58800=12,700,800	12 t/m @58800=705600
MF Technical Survey	HT	60 t/m @ 35000=2100000	-	60 t/m @ 35000=2100000	-	-	-	-	-
Total MF Survey		4,710,000	2,088,000	4,478,000	1,392,000	1,798,000	1,276,000	12,700,800	705,600
Grand Total		15,742,000 sqm						13,406,400 sqm	

ANNEX B to UNMACA National Operational Work Plan
1 April 2005

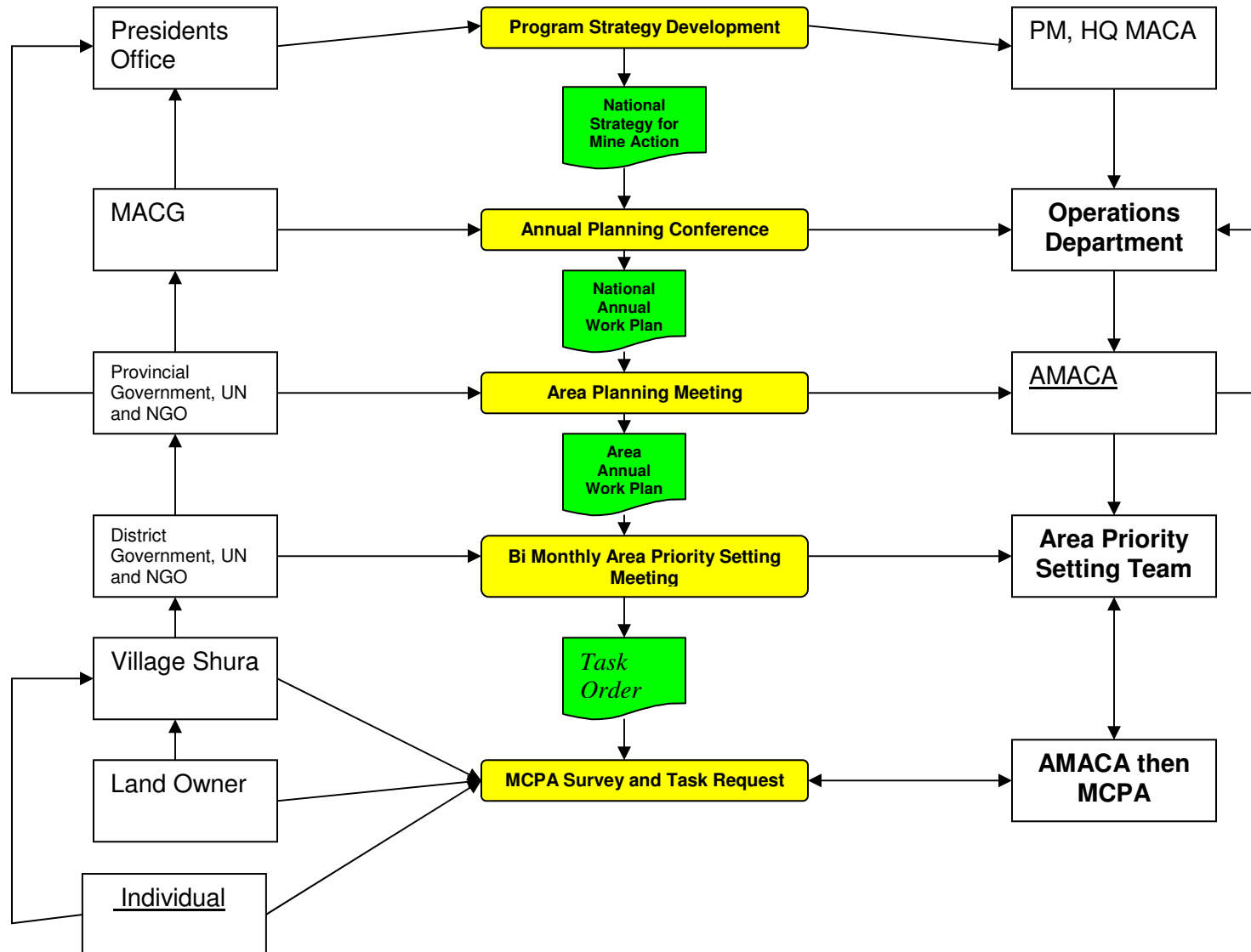
BF Technical Survey	MCPA	12 t/m @ 378000=4536000	12 t/m @ 378000=4536000	12 t/m @ 378000=4536000	12 t/m @ 378000=4536000	10 t/m @ 378000=3780000	7 t/m @ 378000=2646000	-	-
BF Technical Survey	HT	10 t/m @ 324000 = 3240000	-	10 t/m @ 324000 = 3240000	-	-	-	-	-
Total BF Survey		7,776,000	4,536,000	7,776,000	4,536,000	3,780,000	2,646,000	0	0
Grand Total		31,050,000 sqm						0	
Permanent Marking	PPMT	-	36 t/m @ 72 = 2592 (Note 2)	12 t/m @ 72=864 (Note 2)	-	-	-	-	-
MEDDS	MECHEM	-	-	-	-	-	-	40@4800000=19200000 (Note 2)	-
Total		-	2592	864	-	-	-		-
Grand Total		3,456 permanent marks							
QMIT	META	36 t/m @ 16 QA= 576 (Note 3)	17 t/m @ 16 QA= 272	24 t/m @ 16 QA= 384	12 t/m @ 16 QA= 192	12 t/m @ 16 QA= 192	19 t/m @ 16 QA= 304	108 t/m @ 16 QA= 1728	12 t/m @ 16 QA= 192
Grand Total		1920						1920	
EOD teams EOD/BAC	ATC	19 t/m @ 756 = 14364	-	24 t/m @ 756 = 18144	19 t/m @ 756= 14364	24 t/m @ 756 = 18144	24 t/m @ 756 = 18144	24 t/m @ 756 = 18144	-
	DAFA	-	24 t/m @ 756 = 18144	-	-	-	-	24 t/m @ 756 = 18144	-
	OMAR	-	-	-	12 t/m @ 756 = 9072	-	-	12 t/m @ 756 = 9072	-
	DDG	96 t/m @ 1296= 124416	-	48 t/m @ 1296 = 5184	48 t/m @ 1296 = 5184	-	-	-	-
	HI	-	-	-	24 t/m @ 756 = 18144	-	-	-	-
	HALO	50t/m @ 3024= 151200	-	80 t/m @ 3024= 241920	-	-	-	-	-
Stockpile destruction	RONCO	-	24 t/m @ 40000= 960000	12 t/m @ 40000 = 480000	24 t/m @ 40000= 960000	-	-	-	-
Total		289,962	978,144	745,248	1,006,764	18,144	18,144	45,360	
Grand Total		3,056,406						45,360	

Note 1 *Manual teams are cross-trained, so there is no stand-alone BAC teams, whenever Battle area clearance is required the MCT would be deployed.*

Note 2 *Permanent Marking teams would set 72 Permanent Marks per month.*

Note 3: *QMIT would do 16 QA per month.*

LINKAGE TO AUTHORITIES AND COMMUNITIES



MAPA RESOURCES AND ALLOCATIONS 2005/06
SUMMER MAPA RESOURCE ALLOCATION 2005/06 (revised)

Type of Resources	Agency	No. of Teams	No. of Teams To be increased	HUMANITARIAN						RECONSTRUCTION	
				C	S	N/NE	W	E	SE	USAID/GOJ/WB	EC (Note 1)
Manual Clearance Teams (MCT)	ATC	25	0	3	-	6	-	2	4	8	2
	DAFA	18	0	-	6	-	3	-	-	9	-
	OMAR	13	0	2	-	-	2	-	1	8	-
	DDG	4	0	4	-	-	-	-	-	-	-
	HALO	44	0	28	-	16	-	-	-	-	-
CBMCT	ATC	5	0	-	-	-	-	5	-	-	-
Total No. of Teams		109	0	37	6	22	5	7	5	25	2
Mechanical Demining Unit (MDU)	ATC	10	0	2	-	2	-	1	2	3	-
	DAFA	5	(1)	-	2	-	(1)	-	-	3	-
	OMAR	6	0	1	-	-	2	-	-	3	-
	DDG	1	0	1	-	-	-	-	-	-	-
	HALO	19	0	12	-	7	-	-	-	-	-
Total No. of Teams		41	(1)	16	2	9	2(1)	1	2	9	0
MDG	MDC	33	0	3	2	3	2	1	2	19	1
Technical Survey	MCPA	39	0	5	4	4	4	3	2	16	1
Survey without MDS	MCPA	2	(1) MDS	-	-	-	-	-	-	2	-
LIAT	MCPA	16	0	4	2	4	2	2	2	-	-
Technical Survey	HT	14	0	7	-	7	-	-	-	-	-
LIAT	HT	5	0	3	-	2	-	-	-	-	-
MEDDS	MECHEM	4	0	-	-	-	-	-	-	4	-
Total No. of Teams		80	(1)	20	6	17	5	5	4	22	1
QMIT	META	20	(1)	3	1	2	1	1	2	9(1)	1
MDS		8	0	-	-	-	-	-	-	7	1
Total No. of Teams		20	(1)	3	1	2	1	1	2	9(1)	1
EOD teams EOD/BAC	ATC	12	0	2	-	2	2	2	2	2	-
	DAFA	4	(1)	-	2(1)	-	-	-	-	2	-
	OMAR	2	0	-	-	-	1	-	-	1	-
	DDG	16	0	8	-	4	4	-	-	-	-
	HI	2	0	-	-	-	2	-	-	-	-
	HALO	13	0	5	-	8	-	-	-	-	-
Stockpile destruction	RONCO	5	0	-	2	1	2	-	-	-	-
Total No. of Teams		54	(1)	15	4(1)	15	11	2	2	5	0

Note 1: EC funded teams would be allocated to AMAC Center till any EC project come online.

WINTER MAPA RESOURCE ALLOCATION 2005/06

Type of Resources	Agency	No. of Teams	No. of Teams To be increased	HUMANITARIAN						RECONSTRUCTION	
				C	S	N/NE	W	E	SE	USAID/GOJ/WB	EC (Note 1)
Manual Clearance Teams (MCT)	ATC	25	0	1	3	6	-	2	3	8	2
	DAFA	18	0	-	6	-	3	-	-	9	-
	OMAR	13	0	2	-	-	2	-	1	8	-
	DDG	4	0	4	-	-	-	-	-	-	-
	HALO	44	0	28	-	16	-	-	-	-	-
CBMCT	ATC	5	0	-	-	-	-	5	-	-	-
Total No. of Teams		109	0	35	9	22	5	7	4	25	2
Mechanical Demining Unit (MDU)	ATC	10	0	1	2	2	-	1	1	3	-
	DAFA	5	0	-	2	-	-	-	-	3	-
	OMAR	6	0	1	-	-	2	-	-	3	-
	DDG	1	0	1	-	-	-	-	-	-	-
	HALO	19	0	12	-	7	-	-	-	-	-
Total No. of Teams		41	0	15	4	9	2	1	1	9	0
MDG	MDC	33	0	1	3	3	3	1	2	19	1
Technical Survey	MCPA	39	0	3	4	5	3	4	3	16	1
Survey without MDS	MCPA	2	1 (MDS)	-	-	-	-	-	-	2	-
LIAT	MCPA	16	0	4	2	4	2	2	2	-	-
Technical Survey	HT	14	0	7	-	7	-	-	-	-	-
LIAT	HT	5	0	3	-	2	-	-	-	-	-
MEDDS	MECHEM	4	0	-	-	-	-	-	-	4	-
Total No. of Teams		72	1	17	6	18	5	6	5	22	1
QMIT	META	20	0	3	2	2	1	1	1	9	1
MDS		8	0	-	-	-	-	-	-	7	1
Total No. of Teams		20	0	3	2	2	1	1	1	9	1
EOD teams EOD/BAC	ATC	12	0	1	2	2	1	2	2	2	-
	DAFA	4	0	-	2(1)	-	-	-	-	2	-
	OMAR	2	0	-	-	-	1	-	-	1	-
	DDG	16	0	8	-	4	4	-	-	-	-
	HI	2	0	-	-	-	2	-	-	-	-
	HALO	13	0	5	-	8	-	-	-	-	-
Stockpile destruction	RONCO	5	0	-	2	1	2	-	-	-	-
Total No. of Teams		54	0	14	6(1)	15	10	2	2	5	0

MAPA MRE RESOURCES ALLOCATION 2005/06

Region	S/N	Province	High	Low	Medium	Suggested teams as of 2005	Agency	No. of DDR MRE Teams	No. of Massmedia msgs & Materials	No. of Aid Workers Teams	No. of Internally Displaced persons Teams	No of Encashment Center Teams	No. of Monitoring & Evaluation Teams	No. of CORE Training Teams	Others
Central	1	Bamyan	3	21	1	1	OMAR	2				OMAR 1x4	Team 1 x 2 persons	1 x 3	
	2	Kabul	55	168	90	5	OMAR	2		1 OMAR					2 female teams ARCS
	3	Kapisa	9	18	15	1	ARCS	2							1 female in health centers ICRC
	4	Logar	14	29	22	1	OMAR	2							1 female in health centers ICRC
	5	Parwan	46	146	63	4	ARCS	2							
	6	Wardak	9	110	18	2	ARCS	2							
Sub-Total			136	492	209	14		12	0	1	0	0	1		
Eastern	1	Kunar		14	1	0.5	OMAR					OMAR 1x4 (AMAC req.2 teams)	Team 1 x 2 persons		
	2	Laghman		11	4	0.5	OMAR								
	3	Nangarhar	2	75	17	1	OMAR	3		OMAR					
	4	Nuristan	2			0	OMAR								
Sub-Total			4	100	22	2		3	0	0	0	0			
Southeast	1	Ghazni	11	113	17	3	HIB					1			
	2	Khost		39	6	1	OMAR								
	3	Paktika	3	32	6	1	OMAR								
	4	Paktya	14	70	18	2	OMAR								1 female trainer ICRC
Sub-Total			28	254	47	7		0	0	0	0	2	1		
North	1	Badakhshan	2	37	9	1	ARCS					1 HT	1 team x 2 persons		
	2	Baghlan	15	145	32	4	ARCS								
	3	Balkh	6	61	10	1	ARCS	2 DDG		1 ICRC					1 LSP ICRC
	4	Faryab	2	22	6	1	ARCS								1 female in health centers ICRC
	5	Jawzjan	1	7		0	ARCS								1 female in health centers ICRC
	6	Kunduz	5	49	12	1	ARCS								1 female in health centers ICRC
	7	Samangan	9	59	10	1	ARCS								1 female in health centers ICRC
	8	Sari Pul	2	10	1	0.5	ARCS								1 female in health centers ICRC
	9	Takhar	21	43	25	1.5	ARCS								1 female in health centers ICRC
Sub-Total			63	433	105	11		0	0	1	0	0	1		
Southern	1	Hilmand	6	42	14	4	HIB					HIB 1X4	1 team x 2 persons		
	2	Kandahar	11	97	24	4	HIB			1 HIB					
	3	Nimroz		10	4	1	?								
	4	Zabul		28	4	3	HIB								
Sub-Total			17	177	46	12		0	0	1	1	1			
Western	1	Badghis	2	16	1	1	ARCS					HIB 1X4	1 team x 2 persons		
	2	Farah	4	25	10	3.5	HIB								
	3	Ghor	2	12	7	0.5	ARCS								
	4	Hirat	12	88	31	3	HIB/ARCS			1 OMAR	1				
Sub-Total			20	141	49	8		0	0	1	1	1	1		
Grand Total			268	1597	478	54		15	0	4	2	4	4	1	

MAFP RESOURCES ALLOCATION 2005/06

Resource	Agency	No. of Teams	No. of Teams to be increased	MAFP Numbers of Teams					
			April 05 onwards	C	S	N/NE	W	E	SE
MAFP Manual Clearance Teams	ATC	3	[4]	3 + [4]					
	DAFA	3	[4]		3 + [4]				
	DDG	3	[4]			3 + [4]			
Total number of teams		9	[12]	3+ [4]	3 + [4]	3 + [4]	0	0	0
MAFP Permanent Marking Teams	DAFA	3	0		3				
	DDG	1	0			1			
	Other	0	[2]				[1]		[1]
Total number of teams		4	[2]		3	1	[1]	0	[1]
MAFP MRE Teams	ATC	0	[5]	(1) + [3]		[2]			
	DAFA	5	[5]		5 + [5]				
	DDG	2	[5]			2 + [5]			
	Other	0	[5]				[4]		[1]
Total number of teams		7	[20]	(1) + [3]	5 + [5]	2 + [7]	[4]	0	[1]

Legend:

C Center AMAC
 S South AMAC
 N/NE North & Northeast AMAC
 W West AMAC
 E East AMAC
 SE Southeast AMAC
 USAID United States Agency for International Development
 GoJ Government of Japan
 WB World Bank
 EC European Commission
 CBMCT Community Based Manual Clearance Teams
 LIAT Landmine Impact Assessment Team
 MEDDS MECHEM Explosive & Drugs Detection System.

QMIT Quality Management Inspection Team
 MDS Mine Dog Set
 MAFP Mine Action For Peace
 CBMCT Community Based Manual Clearance Team

MRE Resource Allocation 2005/06

Region	S/N	Province	High	Low	Medium	Suggested CB MRE teams as of 2005	Agency	# of DDR MRE Teams	# of Massmed ia messages & Materials	# of Aid Workers Teams	# of Encashme nt Center Teams	# of Monitoring & Evaluation Teams	# of CORE Training Teams	Others
Central	1	Bamyan	3	21	1	1	OMAR	2			OMAR 1x4	Team 1 x 2 persons	1 x 3	
	2	Kabul	55	168	90	5	OMAR	2		1 OMAR				2 female teams ARCS
	3	Kapisa	9	18	15	1	ARCS	2						
	4	Logar	14	29	22	1	OMAR	2						1 female in health centers ICRC
	5	Parwan	46	146	63	4	ARCS	2						1 female in health centers ICRC
	6	Wardak	9	110	18	2	ARCS	2						
Sub-Total			136	492	209	14		12	0	1	0	1		
Eastern	1	Kunar		14	1	0.5	OMAR				OMAR 1x4 (AMAC req.2 teams)	Team 1 x 2 persons	1 x 3	
	2	Laghman		11	4	0.5	OMAR							
	3	Nangarhar	2	75	17	1	OMAR	3						
	4	Nuristan	2			0	OMAR							
Sub-Total			4	100	22	2		3	0	0	0			
Southea st	1	Ghazni	11	113	17	3	HIB					Team 1 x 2 persons	1 x 3	
	2	Khost		39	6	1	OMAR				1			
	3	Paktika	3	32	6	1	OMAR							
	4	Paktya	14	70	18	2	OMAR				1			1 female trainer ICRC
Sub-Total			28	254	47	7		0	0	0	2	1		

North	1	Badakhshan	2	37	9	1	ARCS					1 team x 2 persons		
	2	Baghlan	15	145	32	4	ARCS							
	3	Balkh	6	61	10	1	ARCS	2 DDG		1 ICRC	1 HT			1 LSP ICRC
	4	Faryab	2	22	6	1	ARCS							1 female in health centers ICRC
	5	Jawzjan	1	7		0	ARCS							1 female in health centers ICRC
	6	Kunduz	5	49	12	1	ARCS							1 female in health centers ICRC
	7	Samangan	9	59	10	1	ARCS							1 female in health centers ICRC
	8	Sari Pul	2	10	1	0.5	ARCS							1 female in health centers ICRC
	9	Takhar	21	43	25	1.5	ARCS							1 female in health centers ICRC
Sub-Total			63	433	105	11		0	0	1	0	1		
Southern	1	Hilmand	6	42	14	4	HIB					1 team x 2 persons		
	2	Kandahar	11	97	24	4	HIB			1 HIB				
	3	Nimroz		10	4	1	?							
	4	Zabul		28	4	3	HIB				HIB 1X4			
Sub-Total			17	177	46	12		0	0		1			
Western	1	Badghis	2	16	1	1	ARCS					1 team x 2 persons		
	2	Farah	4	25	10	3.5	HIB							
	3	Ghor	2	12	7	0.5	ARCS							
	4	Hirat	12	88	31	3	HIB/ARCS				HIB 1X4			
Sub-Total			20	141	49	8		0	0		1	1		
Grand Total			268	1597	478	54		15	0	2	4	4	1	

EOD TEAM DEPLOYMENT 2005/06

Agency	Teams	Summer	Teams	Winter
DDG	8 4	Logar Province Districts: (Kolangar)(0506) Mohammad gha (0504) Ghazni Province: Districts: Ghazni (0601) Deh Yak (0603) Kunar Province (if security permits) District 1.Sirkano (1008) 2.Narang 3.Chawki (1011)	4	Nangarhar Province Districts: 1.Behsud (0815) 2.Sorkh Rod (0814) 3.Rodat (0805) 4.Momandara 5.Chapahar (0806) 6.Chaperhar Laghman Province Districts: 1.Qarghaie (0902) 2.Mehterlam
ATC	2	Paktia Province Districts: Jaji (0719) Said karam(0727) Ahmadkhil Zurmat Paktika) 1.Urgon (0702) (in	2	Khust. Bak (0735) Jaji Maydan (0734) Gurbuz (0715) Districts: Tani (0704) Mandozi (0710)
ATC HT	1 2	Kabul Province Districts: 1.Sarobi (0107) 2.Bagrami (0102) 3.Khake Jabar (0103) 4.Charasyab (0105) 5.De Sabz (0106) 6.Shakar Dara (0109) 7.Mir Bachakot (0110) Pangshir Province 1. Anaba 2. Rukha-3.Bazarak	1 3	Wardak Province Districts 1.maidan Shahr Kapisa Province 1. Nejrab 2. mahmoodraqi 3. Kuhistan Perwan Province 1. Salang 2. Jabulsaraj 3. Bagram
ATC OMAR DDG	2 1 4	Herat Province Districts: Khosan (2012) Zendajan (2011) Kushk (2006) Faryab Province Districts: Pashtoon Kot (1806)	1 1 4	Herat Province Districts: Ghoryan (2007) Gozarah (2003)

ATC	2	Kunduz, Province 1. Khanabad 2. Aliabad	2	Balkh Province 1. Kishindy 2. Nahrishahee
DDG	4	Samangan Province 1. Aibak Baghlan rovince 1.Dushee 2.Sangcharak Jozjan Province 1. Central jozjan	4	Takhar Province 1. Khujighar 2. Taliqan
HIB	2	Badghis Province Districts: Ghormach (1904) (if security situation permits)	2	Farah Province Districts: Qala-I-Kah (2108) Anar Dara (2105)
DAFA	2(1)	Qandahar Dand (2404) Daman (2405), Wesh (2409), Panjwai (2413), Maywand (2414)	2(1)	Helmand 1. Kajaki (2306) 2. Greshk 3. Lashkerga
HT	8	Northern Provinces: Priority districts in following provinces: Kunduz, Takhar, Baghlan, Parwan, Balkh, Samangan Central Provinces: Wardak Kabul (Paghman district)	8	The same locations as summer.
RONCO	5	2 South, 1 North & 2 Western Provinces	5	The same locations as summer